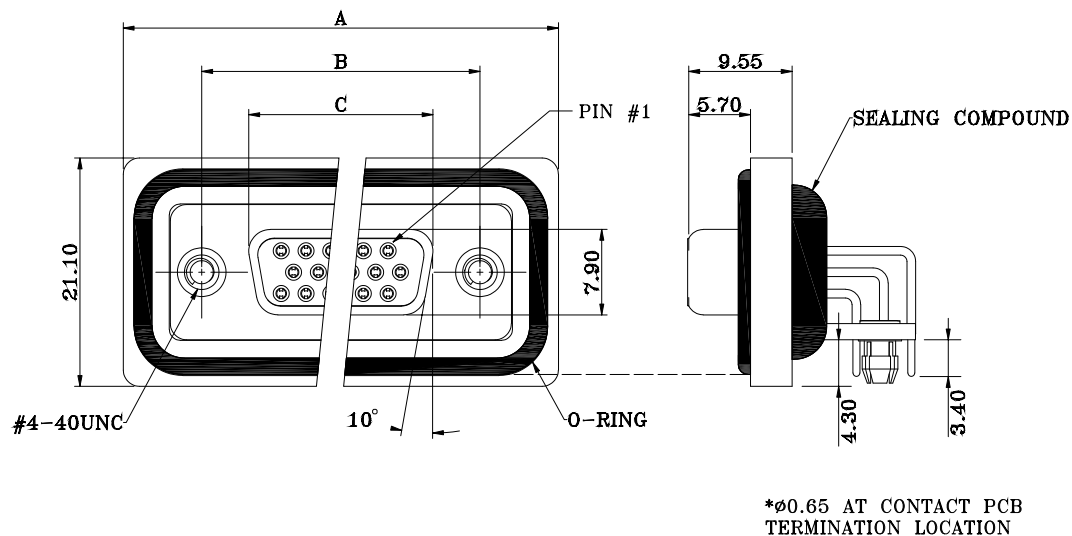


DESCRIPTION: DSUB IP67 FLANGE // FEMALE // HD // RIGHT ANGLE PIN PCB MOUNT



DIMENSIONS(mm)			
SIZE	A	B	C
15	39.50	25.00	16.30
26	48.00	33.30	24.60
44	61.50	47.05	38.40
62	77.80	63.50	54.80

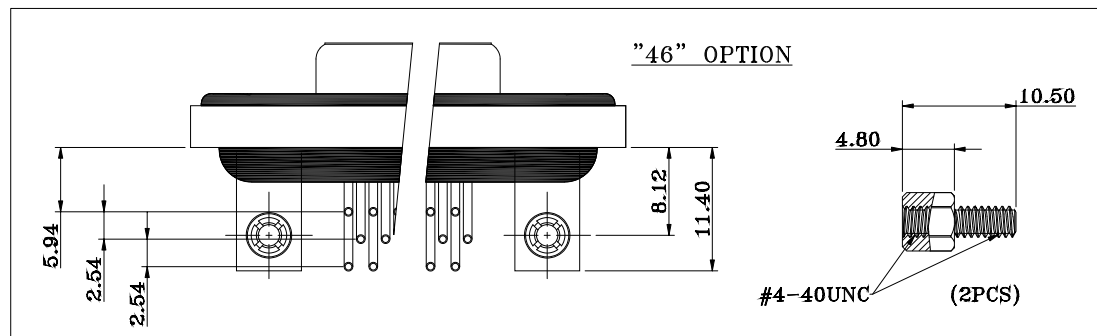
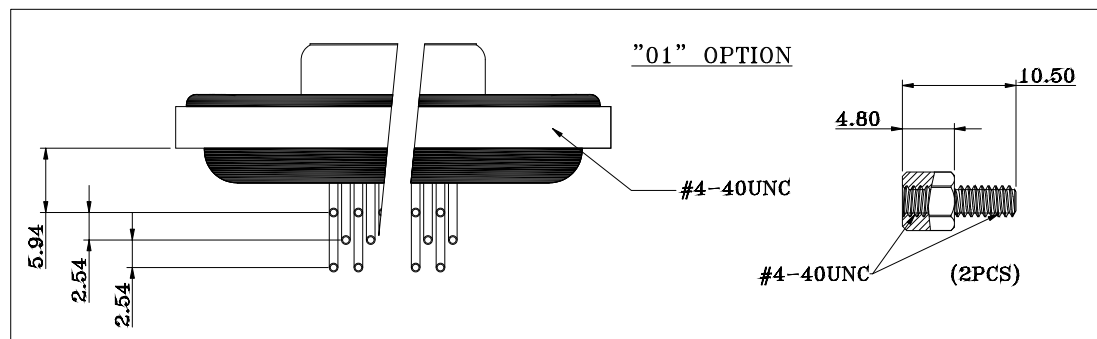
NOTE:

MATERIAL

HOUSING
FLANGE
CONTACT
SHELL
O-RING
SEALING COMPOUND
HARDWARE

PBT UL94V-0, BLACK
PBT UL94V-0, BLACK
BRASS, PLATING P/N KEY BELOW
STEEL, NICKEL
SILICONE
EPOXY
BRASS; NICKEL PLATED

HARDWARE OPTIONS



ELECTRICAL

RATED CURRENT 3A
VOLTAGE 1000 VAC 1 MIN
INSULATOR RESISTANCE 5 GOhms MIN.
CONTACT RESISTANCE 10 mOhms MAX.
WATER PROOF IP67

ENVIRONMENT

OPERATION TEMPERATURE -25°C TO +85°C

HDF-RYY-213LYYY

SERIES

HDF = HD DSUB FLANGE

CONTACT TYPE

R = RIGHT ANGLE PCB MOUNT

POSITIONS

15
26
44
62

GENDER

2 = FEMALE

HARDWARE OPTIONS

01 = 4-40 THREADED INSERTS/4-40 JACKSCREWS
46 = 4-40 THREADED BRACKETS &
BOARD LOCKS/4-40 JACKSCREWS

CONTACT PLATING OPTIONS

1 = GOLD FLASH
2 = 30u" GOLD PLATING

RoHS COMPLIANT



THESE DRAWINGS AND SPECIFICATIONS ARE THE PROPERTY OF NorComp AND SHALL NOT BE REPRODUCED, COPIED OR USED AS THE BASIS FOR THE MANUFACTURE OR SALE OF APPARATUS WITHOUT WRITTEN PERMISSION.

DRAWN:

J. KADEL

DATE:

03/02/2020

TOLERANCES

X. ±0.40
.X ±0.30
.XX ±0.20
.XXX ±0.10

UNITS = mm

DO NOT SCALE FROM DRAWING

NorComp

SCALE:

NTS

SHEET

OF

1

2

REV

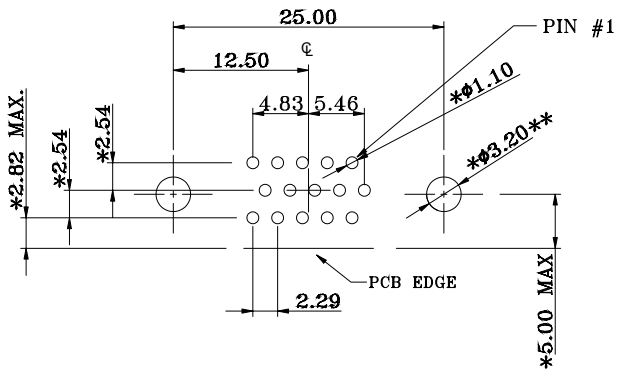
2

DWG NO.

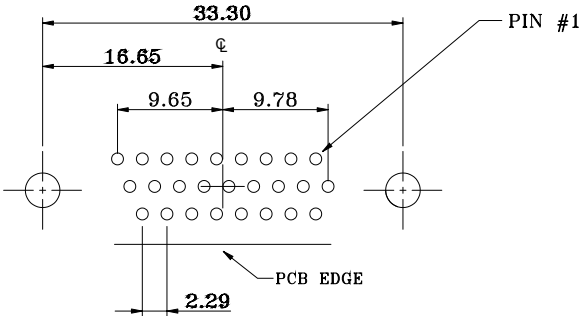
HDF-RYY-213LYYY

**ø3.20MM HOLES NOT NEEDED FOR "01" HARDWARE OPTION

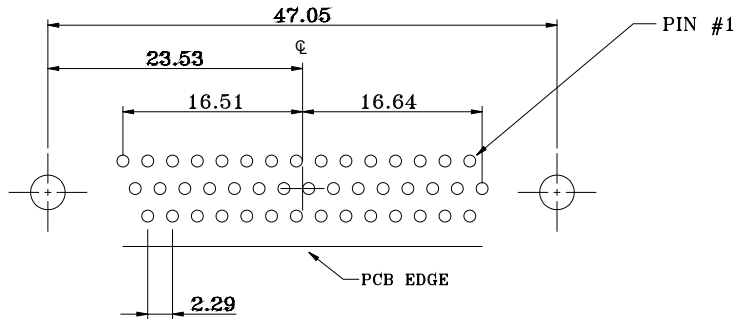
15 POSITION



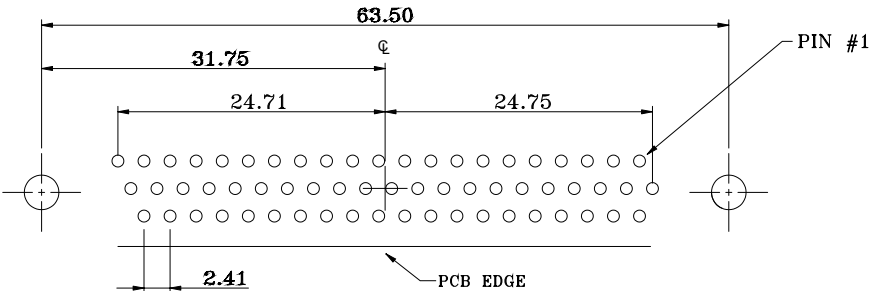
26 POSITION



44 POSITION



62 POSITION



RECOMMENDED PCB LAYOUT
*TYPICAL // HOLE SIZE MAY NOT BE SUITABLE FOR YOUR
SPECIFIC APPLICATION

RoHS COMPLIANT



THESE DRAWINGS AND SPECIFICATIONS ARE THE PROPERTY OF NorComp AND SHALL NOT BE REPRODUCED, COPIED OR USED AS THE BASIS FOR THE MANUFACTURE OR SALE OF APPARATUS WITHOUT WRITTEN PERMISSION.	DRAWN: J. KADEL
	DATE: 03/02/2020

TOLERANCES	
X.	±0.40
.X	±0.30
.XX	±0.20
.XXX	±0.10

UNITS = mm

DO NOT SCALE FROM DRAWING

NorComp

SCALE: NTS	SHEET 2	OF 2	REV 2
DWG NO. HDF-RYY-213LYYY			