

SPECIFICATIONS:

MATERIALS:

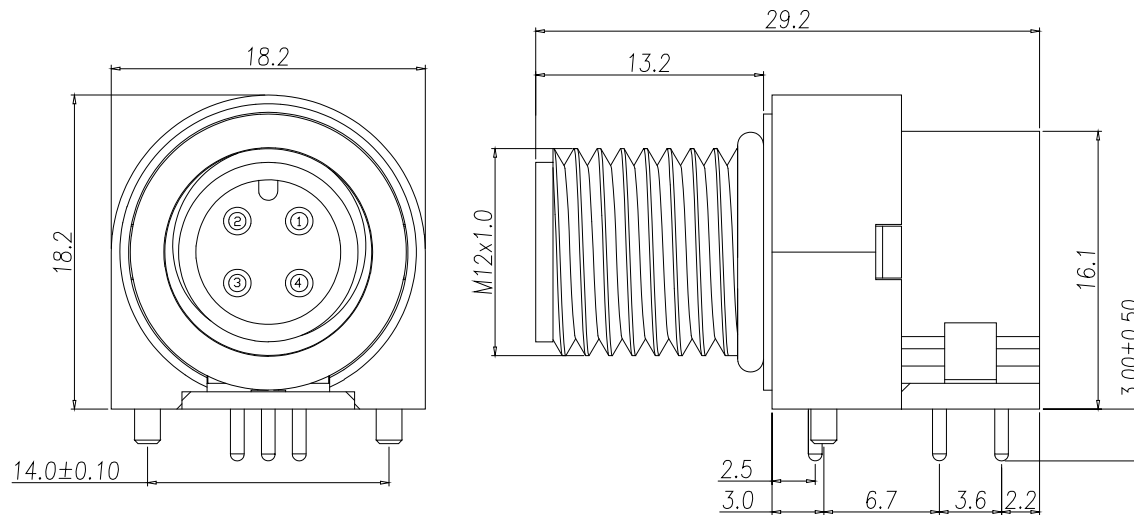
HOUSING:	PBT, UL94 V-0, BLACK
CONTACTS:	GOLD PLATED BRASS (SEE P/N KEY BELOW)
SHELL:	(SEE P/N KEY BELOW)
NUT:	(SEE P/N KEY BELOW)
ORING:	EPDM, BLACK

ELECTRICAL:

RATED CURRENT:	4A
RATED VOLTAGE:	250V
INSULATION RESISTANCE:	100 MOhms MIN.
CONTACT RESISTANCE:	10 mOhms MAX.

ENVIRONMENT:

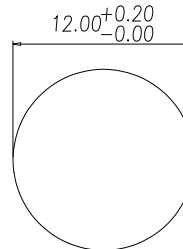
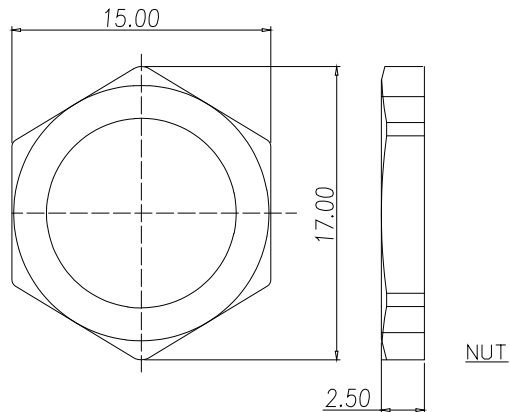
OPERATING TEMPERATURE: -40°C TO +85°C
WATER PROOF: IP67



861-004-113R00Y

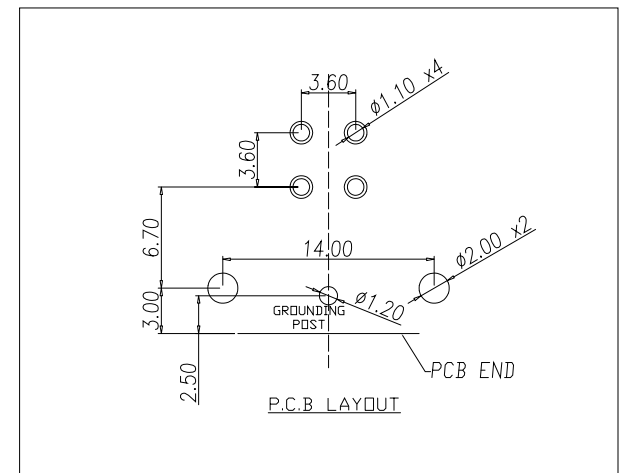
3 = BRASS/NICKEL SHELL & NUT
S = STAINLESS STEEL SHELL & NUT

1 = GOLD FLASH -
4 = 104" GOLD



PANEL CUT-OUT

Full stainless steel variant successfully passes
96-hour salt spray testing per ASTM B117



P.C.B LAYOUT

RoHS COMPLIANT



THESE DRAWINGS AND SPECIFICATIONS ARE THE PROPERTY OF NorComp AND SHALL NOT BE REPRODUCED, COPIED OR USED AS THE BASIS FOR THE MANUFACTURE OR SALE OF APPARATUS WITHOUT WRITTEN PERMISSION.

DRAWN:
M. SIGMON

DATE: 03/07/2016

TOLERANCE	
.x	±0.20
.xx	±0.10
.xxx	±0.05
.xxxx	±0.03
ANGULA	±1°

UNITS = mm

NorComp

DO NOT SCALE FROM DRAWING

SCALE: NTS

SHEET	OF
1	1

REV
5

DWG NO.

861-004-113R00Y