

DESCRIPTION: M12 FEMALE - CABLE MOUNT - 8 POS.

SPECIFICATIONS:

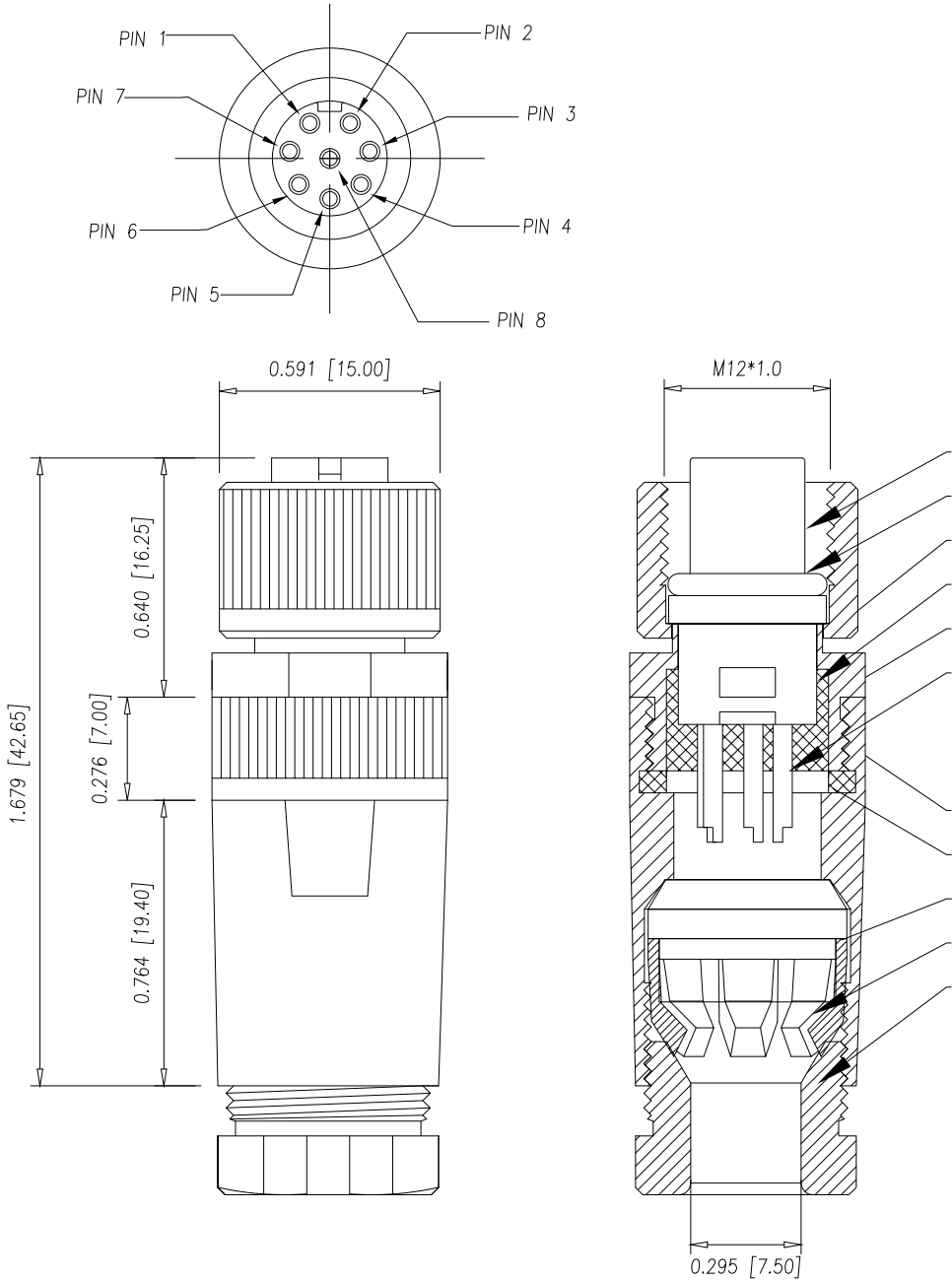
<b>ELECTRICAL:</b>	
RATED CURRENT:	2A
RATED VOLTAGE:	30V
INSULATION RESISTANCE:	100 MOhms MIN.
CONTACT RESISTANCE:	10 mOhms MAX.
WATER PROOF:	IP67
<b>MATERIAL:</b>	
HOUSING:	PBT UL94 V-0, BLACK
CONTACT:	BRASS
NUT:	ALUMINUM ALLOY
SHELL:	ALUMINUM ALLOY
O-RING:	EPDM, BLACK
MAIN BODY:	ALUMINUM ALLOY
GLAND:	SILICONE, BLACK
GLAND CAGE:	POM, WHITE
GLAND NUT:	ALUMINUM ALLOY
<b>FINISH:</b>	
CONTACT:	GOLD PLATED OVER 50u" NICKEL
NUT:	NICKEL PLATED
SHELL:	NICKEL PLATED
MAIN BODY:	NICKEL PLATED
GLAND NUT:	NICKEL PLATED

<b>ENVIRONMENT</b>	
OPERATION TEMPERATURE:	-40°C TO +85°C

<b>MAX WIRE AWG:</b>	24 AWG
----------------------	--------

858-008-203RKTY

1 = GOLD FLASH  
4 = 10u" GOLD



RoHS COMPLIANT

UNITS = INCHES [MM] DO NOT SCALE FROM DRAWING

	THESE DRAWINGS AND SPECIFICATIONS ARE THE PROPERTY OF NorComp AND SHALL NOT BE REPRODUCED, COPIED OR USED AS THE BASIS FOR THE MANUFACTURE OR SALE OF APPARATUS WITHOUT WRITTEN PERMISSION.		DRAWN: M. SIGMON		SCALE: NTS	SHEET 1 OF 1	REV 5
	DATE: 03/07/2016				DWG NO.		

858-008-203RKTY