

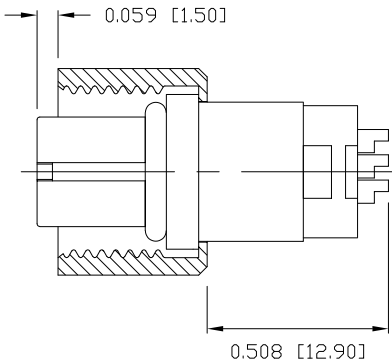
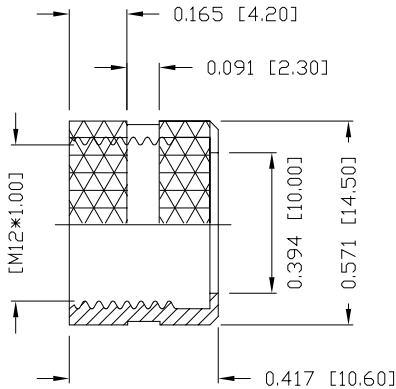
DESCRIPTION: M12 FEMALE - CABLE MOUNT - SOLDER CUP - 4 POS.

SPECIFICATIONS:

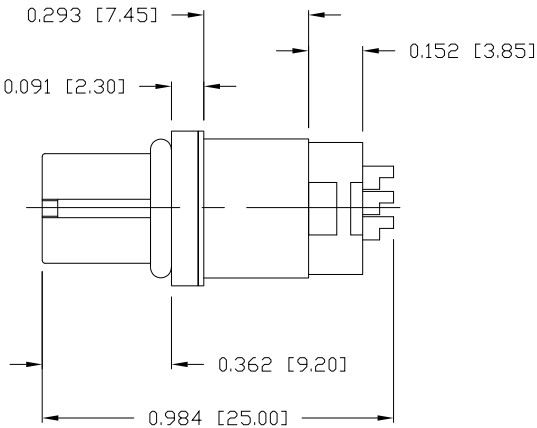
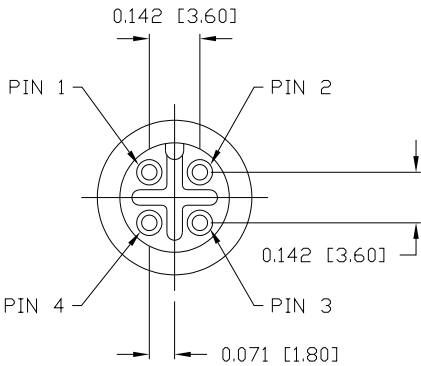
MATERIALS:	
HOUSING:	PBT, UL94 V-0, BLACK
CONTACTS:	GOLD PLATED BRASS (SEE P/N KEY BELOW)
NUT:	(SEE P/N KEY BELOW)
SHELL:	(SEE P/N KEY BELOW)
ORING:	EPDM

ELECTRICAL:	
RATED CURRENT:	4A
RATED VOLTAGE:	250V
INSULATION RESISTANCE:	100 MOhms MIN.
CONTACT RESISTANCE:	10 mOhms MAX.

ENVIRONMENT:	
OPERATING TEMPERATURE:	-40°C TO +85°C
WATER PROOF:	IP67
MAX WIRE AWG:	20



NUT



858-004-203RLSY

3 = BRASS/NICKEL (B/N) SHELL & NUT
S = STAINLESS STEEL (SS) SHELL & NUT
T = B/N SHELL / SS NUT

1 = GOLD FLASH
2 = 30µ" GOLD
4 = 10µ" GOLD

Full stainless steel variant successfully passes
96-hour salt spray testing per ASTM B117

RoHS COMPLIANT



THESE DRAWINGS AND SPECIFICATIONS ARE THE PROPERTY OF NorComp AND SHALL NOT BE REPRODUCED, COPIED OR USED AS THE BASIS FOR THE MANUFACTURE OR SALE OF APPARATUS WITHOUT WRITTEN PERMISSION.

DRAWN:
M. SIGMON

DATE:
03/07/2016

UNITS = inch [mm]

DO NOT SCALE FROM DRAWING

NorComp

SCALE:
NTS

SHEET 1 OF 1

REV 6

DWG NO.

858-004-203RLSY