

DIMENSIONS (in.)				
No. OF PINS	A	B	C	D
15	0.665	0.984	1.213	0.090
26	0.994	1.311	1.543	0.090
44	1.533	1.852	2.089	0.090

DIMENSIONS (mm)				
No. OF PINS	A	B	C	D
15	16.90	25.00	30.80	2.29
26	25.25	33.30	39.20	2.29
44	38.95	47.05	53.05	2.29

MEETS IP67 STANDARDS  
(SEE PAGE 3 FOR SEALING DETAILS)

## MATERIALS AND FINISH:

SHELL: STEEL MATERIAL, NICKEL FINISH  
INSULATOR: PA9T, UL 94V-0 RATED, BLACK (PROCESS TEMP 260°C)  
CONTACT MATERIAL: BRASS  
CONTACT FINISH: SEE PLATING PART NUMBER KEY BELOW  
SEAL MATERIAL: F08 FLEXIBLE ADHESIVE

## ELECTRICAL:

CONTACT CURRENT RATING: 3 AMPS  
CONTACT RESISTANCE: 10 mOHMS Max.  
DIELECTRIC WITHSTANDING VOLTAGE: 1,000 VAC Min.  
INSULATION RESISTANCE: 5 GOHMS Min.  
TEMPERATURE RATING: -55° ~ +125° C

780-M YY-1 1 3 R YY 1

SERIES  
MACHINED CONTACTS  
POSITION  
15  
26  
44  
GENDER  
1 = MALE  
TERMINATION  
1 = VERTICAL DIP  
SHELL PLATING  
3 = NICKEL  
HARDWARE  
00 = NO HARDWARE, Ø.120" HOLE  
01 = 0.098" CLINCH NUT (BOARD SIDE)  
05 = 0.237" BOARD LOCK (BOARD SIDE)  
CONTACT PLATING  
1 = GOLD FLASH, ENTIRE CONTACT  
2 = 30 MICRO INCH GOLD  
3 = 50 MICRO INCH GOLD

RoHS COMPLIANT



THESE DRAWINGS AND SPECIFICATIONS ARE THE PROPERTY OF NorComp AND SHALL NOT BE REPRODUCED, COPIED OR USED AS THE BASIS FOR THE MANUFACTURE OR SALE OF APPARATUS WITHOUT WRITTEN PERMISSION.

DRAWN:  
J. KADEL

DATE:  
08/03/2018

UNITS = INCHES [MM] DO NOT SCALE FROM DRAWING

NorComp

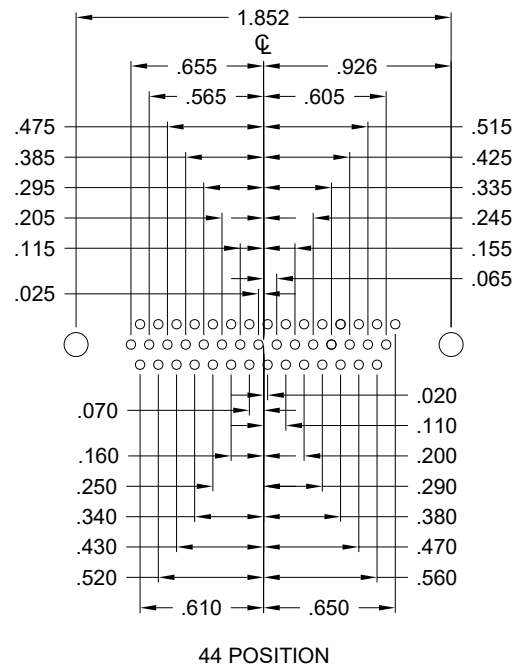
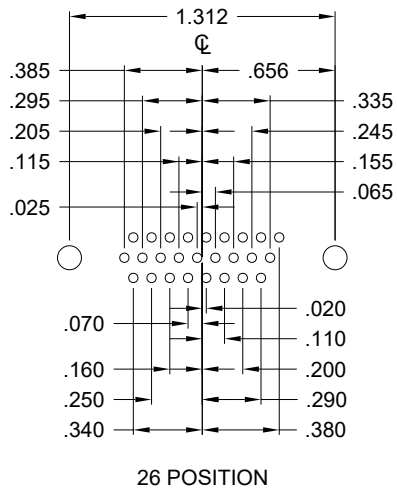
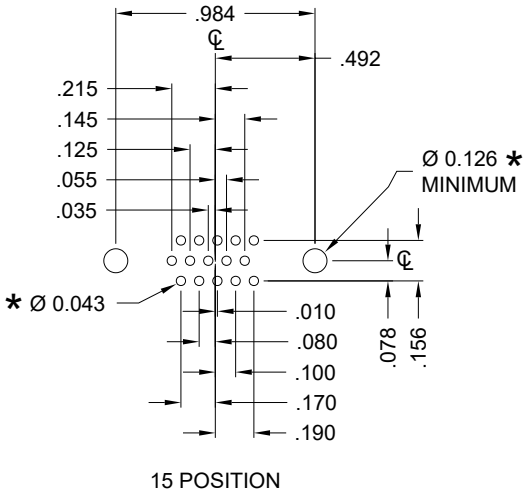
SCALE:  
NTS

SHEET OF  
1 4

REV  
19

DWG NO.

780-MYY-113RYY1



HOLE PATTERN SHOWN  
ARE FOR MALE

\* TYP.  
SUGGESTED SIZE  
MAY NOT BE SUITABLE FOR ALL APPLICATIONS

RoHS COMPLIANT



THESE DRAWINGS AND SPECIFICATIONS ARE THE PROPERTY OF NorComp AND SHALL NOT BE REPRODUCED, COPIED OR USED AS THE BASIS FOR THE MANUFACTURE OR SALE OF APPARATUS WITHOUT WRITTEN PERMISSION.

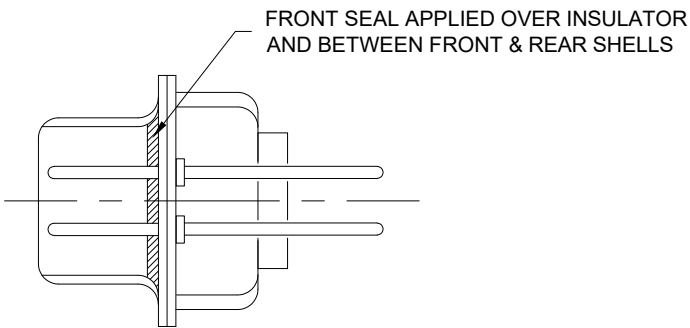
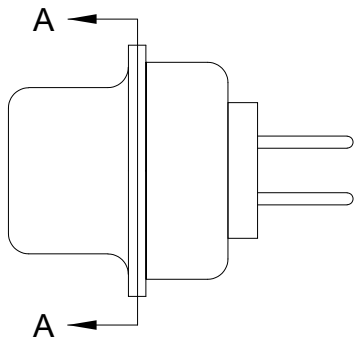
DRAWN:  
J. KADEL  
DATE:  
08/03/2018

UNITS = inches

DO NOT SCALE FROM DRAWING

NorComp

SCALE: NTS	SHEET 2 OF 4	REV 19
DWG NO. 780-MYY-113RYY1		



DETAIL A-A

RoHS COMPLIANT

DO NOT SCALE FROM DRAWING



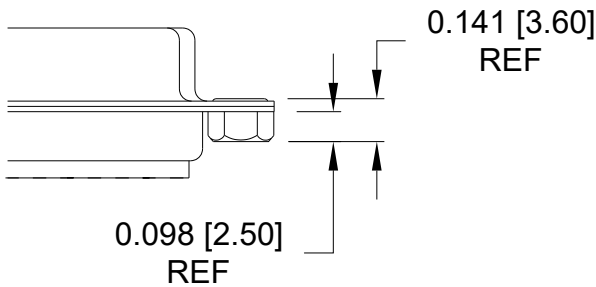
THESE DRAWINGS AND SPECIFICATIONS ARE THE PROPERTY OF NorComp AND SHALL NOT BE REPRODUCED, COPIED OR USED AS THE BASIS FOR THE MANUFACTURE OR SALE OF APPARATUS WITHOUT WRITTEN PERMISSION.	DRAWN: J. KADEL
	DATE: 08/03/2018



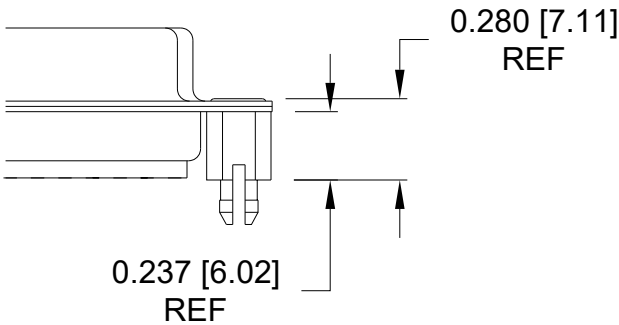
SCALE: NTS	SHEET 3 OF 4	REV 19
DWG NO. 780-MYY-113RYY1		

ALL CLINCH-NUTS ARE 4-40 INTERNAL THREADS

01X ..... 0.098" (BOARD SIDE)



05X ..... 0.237" (BOARD SIDE)



RoHS COMPLIANT

DRAWN:  
J. KADEL  
DATE:  
08/03/2018

UNITS = INCHES [MM] DO NOT SCALE FROM DRAWING



THESE DRAWINGS AND SPECIFICATIONS ARE THE PROPERTY OF NorComp AND SHALL NOT BE REPRODUCED, COPIED OR USED AS THE BASIS FOR THE MANUFACTURE OR SALE OF APPARATUS WITHOUT WRITTEN PERMISSION.

NorComp

SCALE: NTS SHEET 4 OF 4 REV 19

DWG NO. 780-MYY-113RYY1