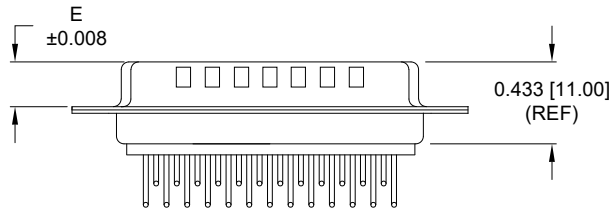
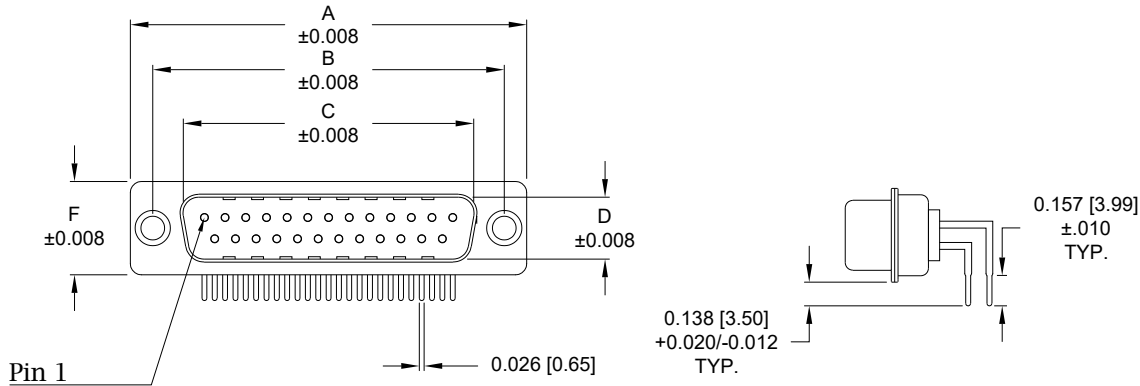


Description: 0.370" Right Angle / Machined

Dimensions (inch/mm)						
Pins	A	B	C	D	E	F
9	1.213	0.984	0.665	0.327	0.240	0.492
	30.80	25.00	16.90	8.30	6.10	12.50
15	1.543	1.311	0.994	0.327	0.240	0.492
	39.20	33.30	25.25	8.30	6.10	12.50
25	2.089	1.852	1.533	0.327	0.240	0.492
	53.05	47.05	38.95	8.30	6.10	12.50



Meets IP67 Standards
(See page 3 for sealing details)

Material:

Shell: Nickel Plated Steel
Insulator: UL 94V-O Rated, White PA6T
Process Temperature: 260°C
Contact: Precision Machined Copper Alloy
Seal: Flexible F08 Adhesive

Electrical:

Current Rating: 5 AMPS
Contact Resistance: 10 mOhms Max.
Insulation Resistance: 5 GOhms Min.
Working Voltage: 250V
Temperature: -55° C TO +125° C

7 7 4 - E Y Y - 1 1 Y R Y Y 1									
Series									
Position									
E09									
E15									
E25									
Gender									
1 = Male									
Termination									
1 = PCB Mounting									
Shell Plating									
3 = Nickel									
RoHS Compliant									
Hardware Options									
00 = No Hardware									
01 = 0.098" Clinch Nut (Board Side)									
14 = Standard Bracket with 4-40 Screwlock									
24 = Standard Bracket with 4-40 Captive Screw									
46 = Boardlock Bracket with 4-40 Insert									
Plating Options									
1 = Gold Flash									
2 = 30μ" Gold									
3 = 50μ" Gold									

RoHS COMPLIANT



THESE DRAWINGS AND SPECIFICATIONS ARE THE PROPERTY OF NorComp AND SHALL NOT BE REPRODUCED, COPIED OR USED AS THE BASIS FOR THE MANUFACTURE OR SALE OF APPARATUS WITHOUT WRITTEN PERMISSION.

DRAWN:
C. Smith

DATE:
03/26/2009

UNITS = inch [mm]

DO NOT SCALE FROM DRAWING

NorComp

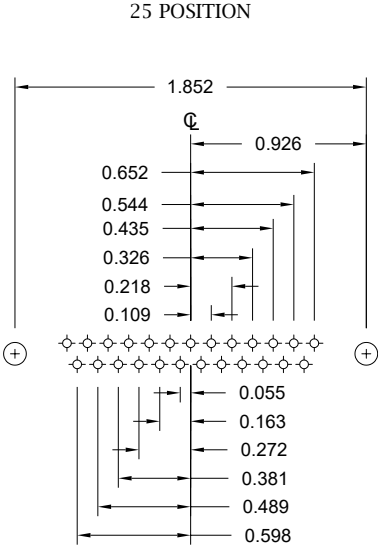
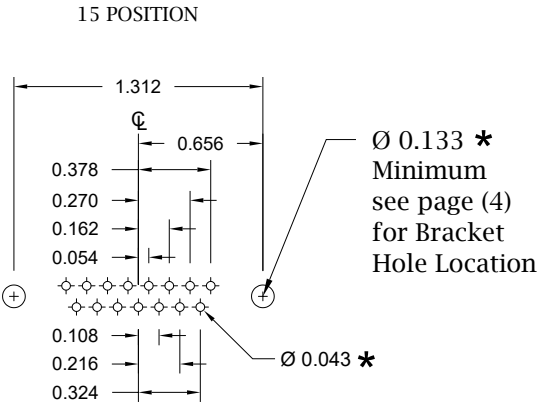
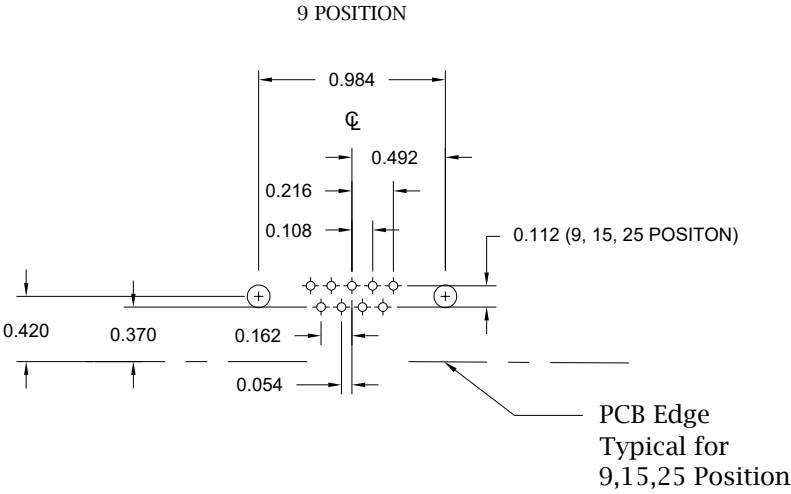
SCALE:
NTS

SHEET 1 OF 4

REV
13

DWG NO.

774-EYY-11YRYY1



* Typical Suggested Size
May Not Be Suitable For All Applications

UNITS = inch

DO NOT SCALE FROM DRAWING

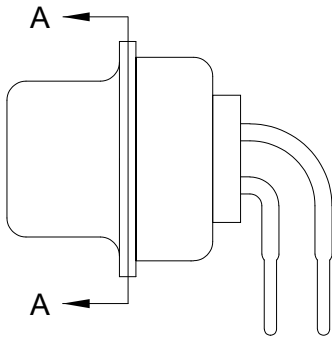
RoHS COMPLIANT



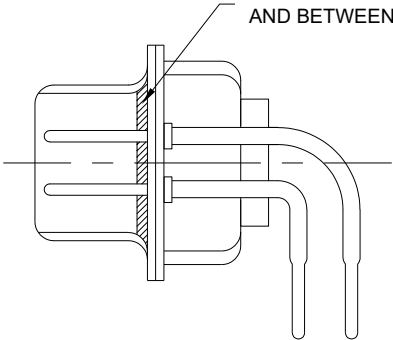
THESE DRAWINGS AND SPECIFICATIONS ARE THE PROPERTY OF NorComp AND SHALL NOT BE REPRODUCED, COPIED OR USED AS THE BASIS FOR THE MANUFACTURE OR SALE OF APPARATUS WITHOUT WRITTEN PERMISSION.	DRAWN: C. Smith
	DATE: 03/26/2009

NorComp

SCALE: NTS	SHEET 2 OF 4	REV 13
DWG NO. 774-EYY-11YRYY1		



FRONT SEAL APPLIED OVER INSULATOR
AND BETWEEN FRONT & REAR SHELLS



DETAIL A-A

RoHS COMPLIANT

DO NOT SCALE FROM DRAWING



THESE DRAWINGS AND SPECIFICATIONS ARE THE PROPERTY OF NorComp AND SHALL NOT BE REPRODUCED, COPIED OR USED AS THE BASIS FOR THE MANUFACTURE OR SALE OF APPARATUS WITHOUT WRITTEN PERMISSION.

DRAWN:
C. Smith

DATE:
03/26/2009

NorComp

SCALE: NTS

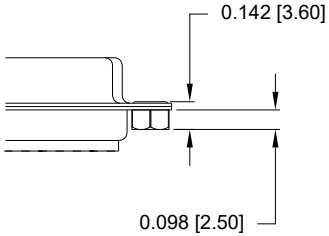
SHEET 3 OF 4

REV 13

DWG NO. 774-EYY-11YRYY1

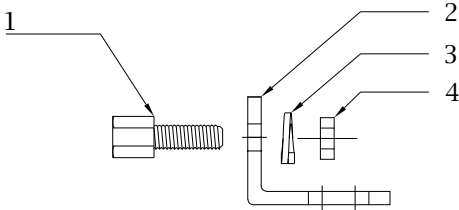
01 Hardware Option

0.098" Clinch Nut (Board Side)



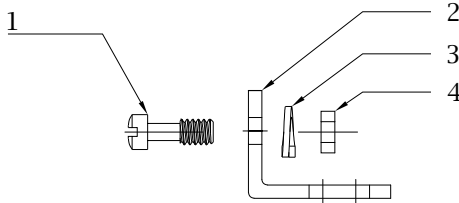
Clinch Nut has 4-40 Internal Threads

14 Hardware Option		
	Description	NorComp Part Number
1	4-40 Screwlock	SFSO4401NR
2	Bracket	K501CZ
3	Lock Washer	LW1T
4	4-40 Nut	N4401N



**Search Hardware Part Number To Obtain Technical Specifications.

24 Hardware Option		
	Description	NorComp Part Number
1	4-40 Captive Screw	SSH4401T
2	Bracket	K501CZ
3	Lock Washer	LW1T
4	4-40 Nut	N4401N

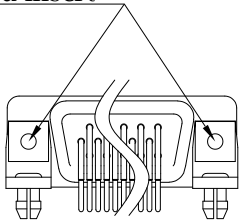


**Search Hardware Part Number To Obtain Technical Specifications.

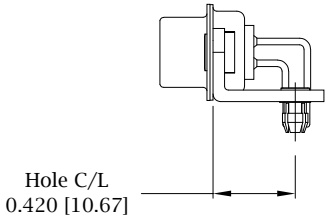
46 Hardware Option

Boardlock Bracket and 4-40 Insert

#4-40 Threaded Insert



9-25 Position Connector Boardlock Bracket



Boardlock Brackets Come Assembled On Connector

Recommend max torque for all options => 40 in-oz

RoHS COMPLIANT



THESE DRAWINGS AND SPECIFICATIONS ARE THE PROPERTY OF NorComp AND SHALL NOT BE REPRODUCED, COPIED OR USED AS THE BASIS FOR THE MANUFACTURE OR SALE OF APPARATUS WITHOUT WRITTEN PERMISSION.

DRAWN:
C. Smith

DATE:
03/26/2009

UNITS = inch [mm]

DO NOT SCALE FROM DRAWING

NorComp

SCALE:
NTS

SHEET 4 OF 4

REV 13

DWG NO. 774-EYY-11YRY1