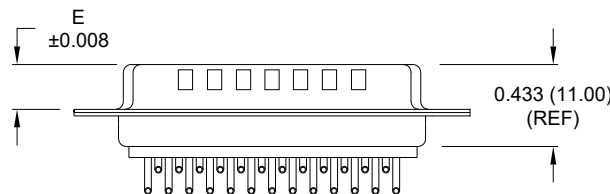
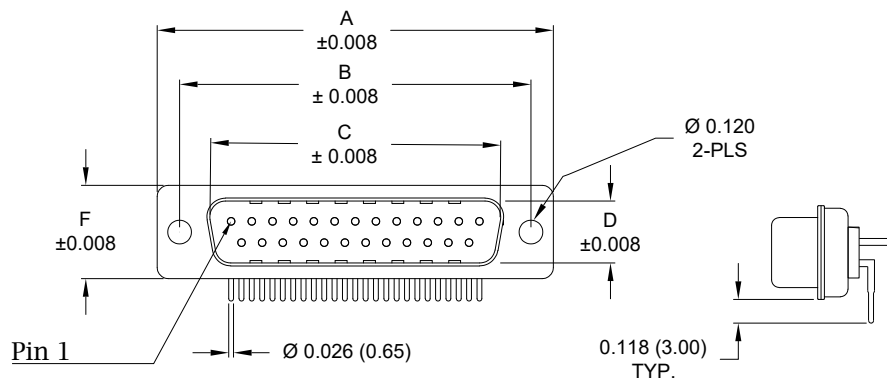


Description: 0.283" Right Angle / Machined

Dimensions (inch/mm)

Pins	A	B	C	D	E	F
9	1.213	0.984	0.665	0.327	0.240	0.492
	30.80	25.00	16.90	8.30	6.10	12.50
15	1.543	1.311	0.994	0.327	0.240	0.492
	39.20	33.30	25.25	8.30	6.10	12.50
25	2.089	1.852	1.533	0.327	0.240	0.492
	53.05	47.05	38.95	8.30	6.10	12.50



Meets IP67 Standards

(See page 3 for sealing details)

Material:

Shell: Nickel Plated Steel
Insulator: Glass-Filled Nylon Thermoplastic, UL94 V-0
Process Temperature: 260°C
Contact: Precision Machined Copper Alloy
Seal: Flexible F08 Adhesive

Electrical:

Current Rating: 5 AMPS
Contact Resistance: 10 mOhms Max.
Insulation Resistance: 5 GOhms Min.
Dielectric Withstand Voltage: 1000 VAC for 1 Min.
Working Voltage: 250V
Temperature: -55° C TO +125° C

7 7 3 - E Y Y - 1 1 Y R Y Y 1

Series
Position
E09
E15
E25
Gender
1 = Male
Termination
1 = PCB Mounting
Shell Plating
3 = Nickel
RoHS Compliant
Hardware Options
00 = No Hardware
01 = 0.065" Clinch Nut (Board Side)
0A = 0.098" Clinch Nut (Board Side)
14 = Standard Bracket with 4-40 Screwlock
46 = Boardlock Bracket with 4-40 Insert
Plating Options
1 = Gold Flash
2 = 30μ" Gold

RoHS COMPLIANT



THESE DRAWINGS AND SPECIFICATIONS ARE THE PROPERTY OF NorComp AND SHALL NOT BE REPRODUCED, COPIED OR USED AS THE BASIS FOR THE MANUFACTURE OR SALE OF APPARATUS WITHOUT WRITTEN PERMISSION.

DRAWN:
Pam Jenkins

DATE:
06/29/2009

UNITS = inch [mm]

DO NOT SCALE FROM DRAWING

NorComp

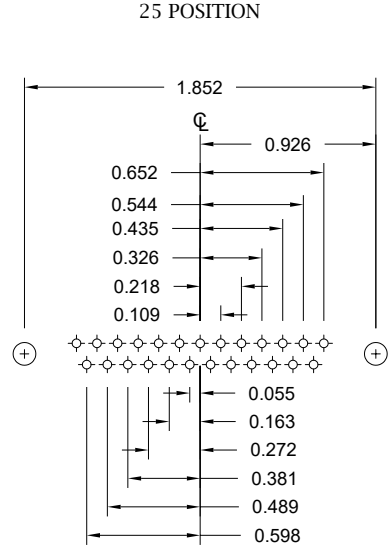
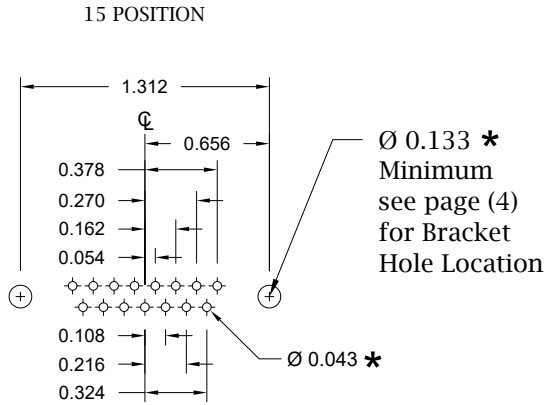
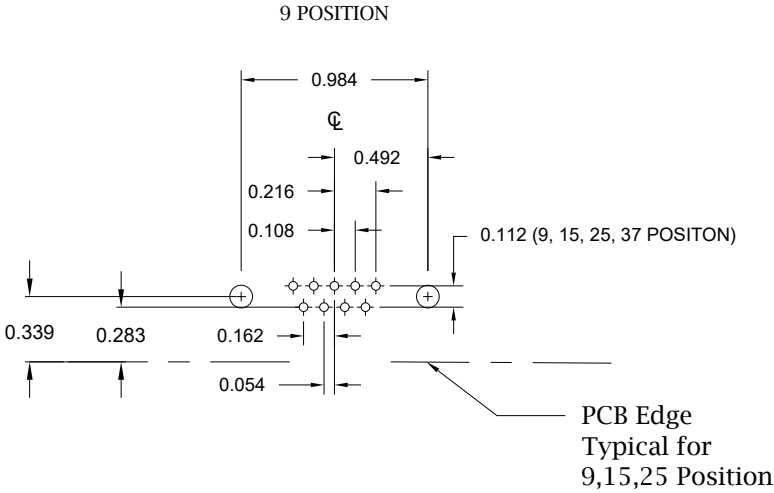
SCALE:
NTS

SHEET 1 OF 4

REV
20

DWG NO.

773-EYY-11YRY1



* Typical Suggested Size
May Not Be Suitable For All Applications

RoHS COMPLIANT



THESE DRAWINGS AND SPECIFICATIONS ARE THE PROPERTY OF NorComp AND SHALL NOT BE REPRODUCED, COPIED OR USED AS THE BASIS FOR THE MANUFACTURE OR SALE OF APPARATUS WITHOUT WRITTEN PERMISSION.

DRAWN:
Pam Jenkins

DATE:
06/29/2009

UNITS = inch

NorComp

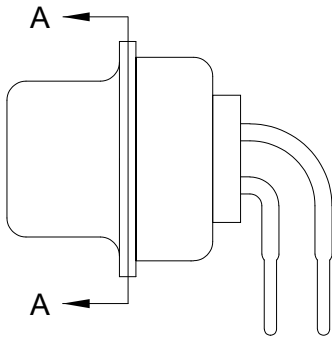
DO NOT SCALE FROM DRAWING

SCALE:
NTS

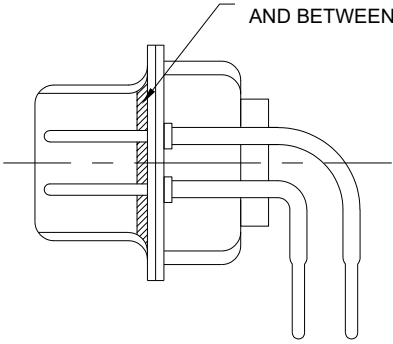
SHEET OF
2 4

REV
20

DWG NO. 773-EYY-11YRY1



FRONT SEAL APPLIED OVER INSULATOR
AND BETWEEN FRONT & REAR SHELLS



DETAIL A-A

RoHS COMPLIANT

DO NOT SCALE FROM DRAWING



THESE DRAWINGS AND SPECIFICATIONS ARE THE PROPERTY OF NorComp AND SHALL NOT BE REPRODUCED, COPIED OR USED AS THE BASIS FOR THE MANUFACTURE OR SALE OF APPARATUS WITHOUT WRITTEN PERMISSION.

DRAWN:
Pam Jenkins

DATE:
06/29/2009

NorComp

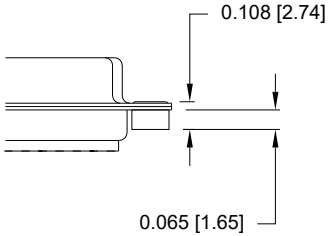
SCALE: NTS

SHEET 3 OF 4

REV 20

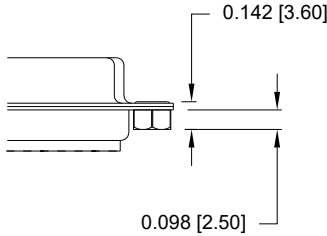
DWG NO. 773-EYY-11YRYY1

01 Hardware Option
0.065" Clinch Nut (Board Side)



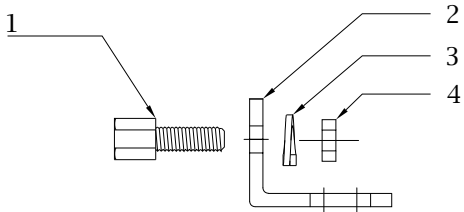
Clinch Nut has 4-40 Internal Threads

0A Hardware Option
0.098" Clinch Nut (Board Side)



Clinch Nut has 4-40 Internal Threads

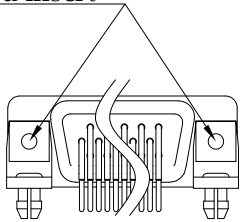
14 Hardware Option		
	Description	NorComp Part Number
1	4-40 Screwlock	SFSO4401NR
2	Bracket	K501CZ
3	Lock Washer	LW1T
4	4-40 Nut	N4401N



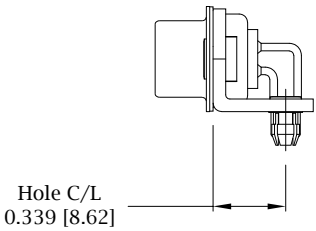
**Search Hardware Part Number To Obtain Technical Specifications.

46 Hardware Option
Boardlock Bracket and 4-40 Insert

#4-40 Threaded Insert



9-25 Position Connector Boardlock Bracket



Boardlock Brackets Come Assembled On Connector

Recommend max torque for all options => 40 in-oz

RoHS COMPLIANT



THESE DRAWINGS AND SPECIFICATIONS ARE THE PROPERTY OF NorComp AND SHALL NOT BE REPRODUCED, COPIED OR USED AS THE BASIS FOR THE MANUFACTURE OR SALE OF APPARATUS WITHOUT WRITTEN PERMISSION.

DRAWN:
Pam Jenkins

DATE:
06/29/2009

UNITS = inch [mm]

DO NOT SCALE FROM DRAWING

NorComp

SCALE:
NTS

SHEET 4 OF 4

REV 20

DWG NO.

773-EYY-11YRY1