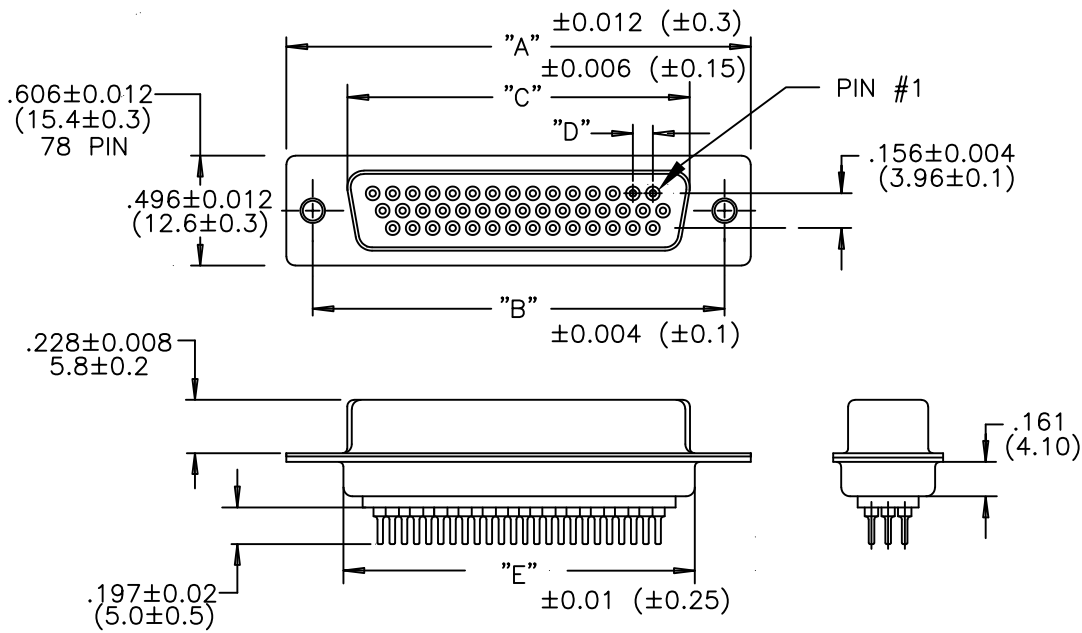
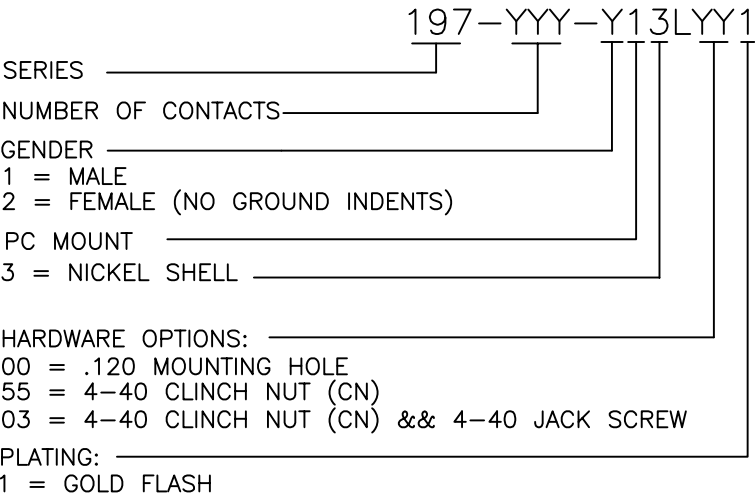


NUMBER OF CONTACTS	"A" Inch (mm)	"B" Inch (mm)	"C" Inch (mm)	"D" Inch (mm)	"E" Inch (mm)
15	1.213 (30.80)	.984 (24.99)	.643 (16.34)	.090 (2.29)	.756 (19.20)
26	1.543 (39.20)	1.312 (33.32)	.972 (24.70)	.090 (2.29)	1.091 (27.70)
44	2.087 (53.00)	1.852 (47.04)	1.512 (38.40)	.090 (2.29)	1.618 (41.10)
62	2.732 (69.40)	2.500 (63.50)	2.157 (54.80)	.095 (2.41)	2.256 (57.30)
78	2.638 (67.00)	2.406 (61.10)	2.055 (52.20)	.095 (2.41)	2.169 (55.10)



NOTE:

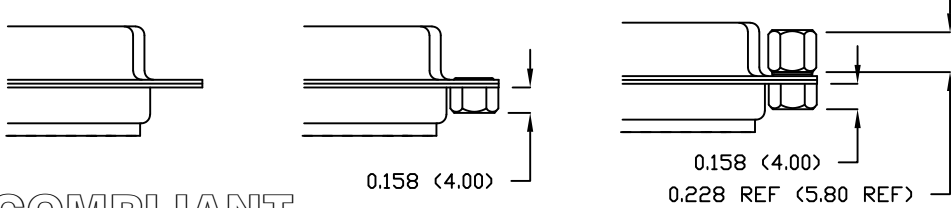
MATERIAL  
HOUSING: PBT UL94V-0, BLACK  
230°C PROCESS TEMP  
CONTACT: COPPER ALLOY  
SHELL: STEEL  
FINISH  
CONTACT: FULL GOLD FLASH  
SHELL: NICKEL  
ELECTRICAL  
RATED CURRENT: 3A  
DWV: 500VAC RMS FOR 1 MIN  
INSULATOR RESISTANCE: 1000 MΩhms MIN.  
CONTACT RESISTANCE: 15 mΩhms MAX.  
ENVIRONMENT  
OPERATION TEMPERATURE: -50°C TO +100°C



00 ..... THRU HOLE

55 ..... CN

03 ..... CN // JACK SCREW



RoHS COMPLIANT



THESE DRAWINGS AND SPECIFICATIONS ARE THE PROPERTY OF NorComp AND SHALL NOT BE REPRODUCED, COPIED OR USED AS THE BASIS FOR THE MANUFACTURE OR SALE OF APPARATUS WITHOUT WRITTEN PERMISSION.

DRAWN:  
P. JENKINS  
DATE:  
09/15/2005

UNITS = inch (mm)

DO NOT SCALE FROM DRAWING

NorComp

SCALE: NTS	SHEET 1 OF 1	REV 6
DWG NO.	197-YYY-213LYY1	