

DIMENSIONS (in.)

No. OF PINS	A	B	C	D	Insulator Material
15	0.642	0.984	1.213	0.090	PA9T
26	0.968	1.311	1.543	0.090	PA9T
44	1.512	1.852	2.089	0.090	PA9T
62	2.157	2.500	2.732	0.095	PA6T

DIMENSIONS (mm)

No. OF PINS	A	B	C	D	Insulator Material
15	16.30	25.00	30.80	2.29	PA9T
26	24.60	33.30	39.20	2.29	PA9T
44	38.40	47.05	53.05	2.29	PA9T
62	54.80	63.50	69.40	2.41	PA6T

MATERIALS AND FINISH:

SHELL: STEEL MATERIAL, NICKEL FINISH
INSULATOR: PA9T or PA6T, UL 94V-0 RATED, BLACK (PROCESS TEMP 260°C)
CONTACT MATERIAL: BRASS
CONTACT FINISH: SEE P/N KEY BELOW

ELECTRICAL:

CONTACT CURRENT RATING: 3 AMPS
CONTACT RESISTANCE: 10 mOHMS Max.
DIELECTRIC WITHSTANDING VOLTAGE: 1,000VAC Min.
INSULATION RESISTANCE: 5 GOHMS Min.
TEMPERATURE RATING: -55° ~ +125° C

181-MYY-2YYRYYY

SERIES _____
MACHINED CONTACTS _____
POSITIONS _____
15
26
44
62
GENDER _____
2 = FEMALE
TERMINATION _____
1 = RIGHT ANGLE
SHELL PLATING _____
3 = NICKEL
HARDWARE OPTIONS _____
14 = BRACKET WITH #4-40 INSERT, BOARD LOCK AND LOCATOR PLATE
46 = BRACKET WITH #4-40 SCREW LOCK, BOARD LOCK AND LOCATOR PLATE
PLATING OPTIONS _____
1 = GOLD FLASH, ENTIRE CONTACT
2 = 30u" GOLD, ENTIRE CONTACT
3 = 50u" GOLD, ENTIRE CONTACT

RoHS COMPLIANT



THESE DRAWINGS AND SPECIFICATIONS ARE THE PROPERTY OF NorComp AND SHALL NOT BE REPRODUCED, COPIED OR USED AS THE BASIS FOR THE MANUFACTURE OR SALE OF APPARATUS WITHOUT WRITTEN PERMISSION.

DRAWN:

C. SMITH

DATE:

03/19/2007

UNITS = inches [mm]

DO NOT SCALE FROM DRAWING

NorComp

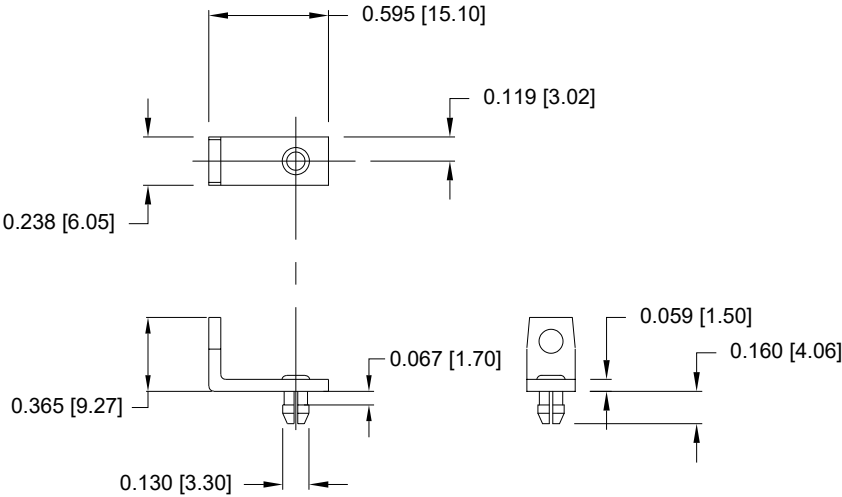
SCALE:
NTSSHEET OF
1 4REV
25

DWG NO.

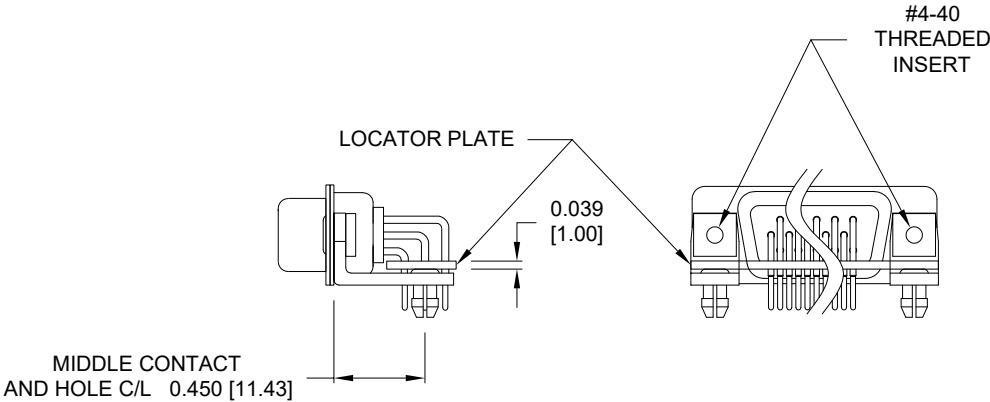
181-MYY-2YYRYYY

MATERIAL: COLD ROLLED STEEL

PLATING: CLEAR ZINC

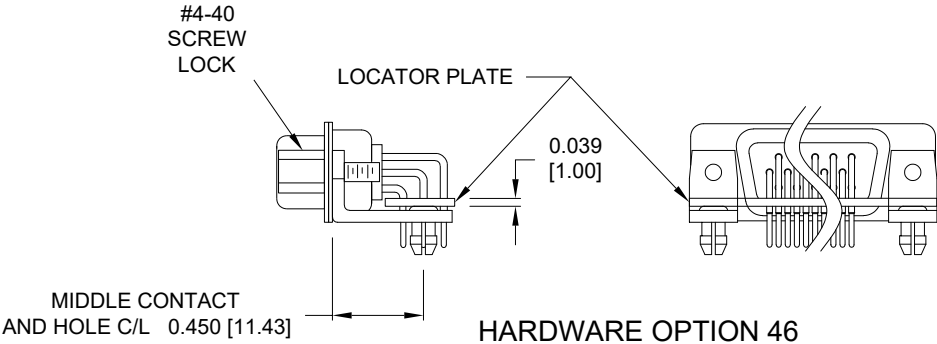


MOUNTING BRACKET
WITH BOARD LOCK
HARDWARE OPTIONS 14 & 46



HARDWARE OPTIONS 14

BRACKETS MOUNTED ON CONNECTOR
WITH LOCATOR PLATE



HARDWARE OPTION 46

RoHS COMPLIANT



THESE DRAWINGS AND SPECIFICATIONS ARE THE PROPERTY OF NorComp AND SHALL NOT BE REPRODUCED, COPIED OR USED AS THE BASIS FOR THE MANUFACTURE OR SALE OF APPARATUS WITHOUT WRITTEN PERMISSION.

DRAWN: C. SMITH

DATE: 03/19/2007

UNITS = inches [mm] DO NOT SCALE FROM DRAWING

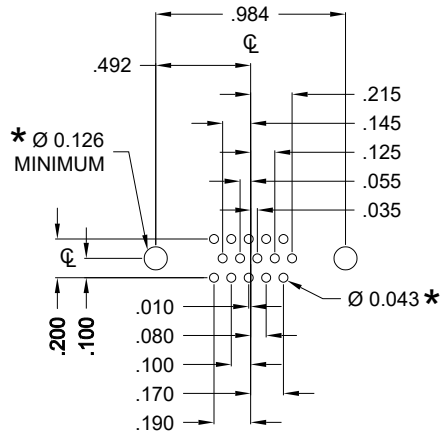
NorComp

SCALE: NTS

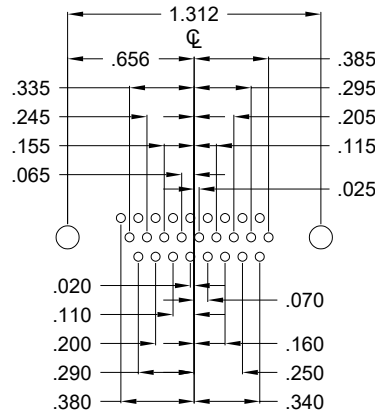
SHEET 2 OF 4

REV 25

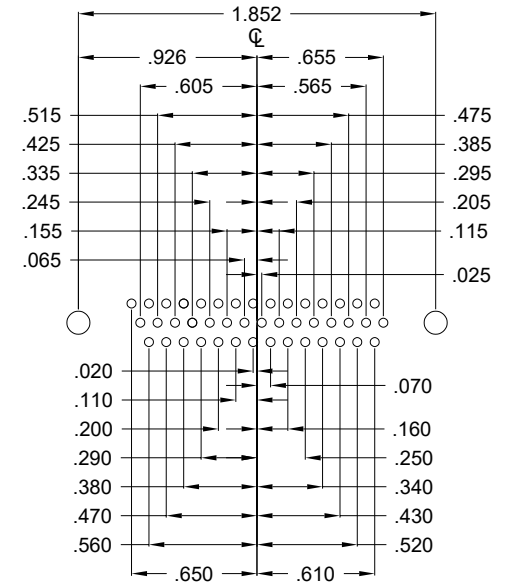
DWG NO. 181-MYY-2YYRYYY



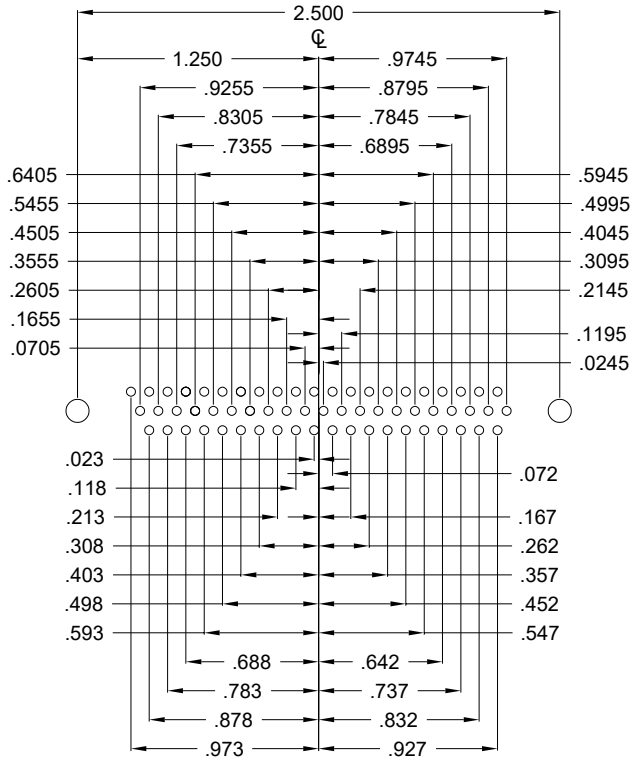
15 POSITION



26 POSITION



44 POSITION



62 POSITION

HOLE PATTERN SHOWN
ARE FOR FEMALE

* TYP.
SUGGESTED SIZE
MAY NOT BE SUITABLE FOR ALL APPLICATIONS

RoHS COMPLIANT



THESE DRAWINGS AND SPECIFICATIONS ARE THE PROPERTY OF NorComp AND SHALL NOT BE REPRODUCED, COPIED OR USED AS THE BASIS FOR THE MANUFACTURE OR SALE OF APPARATUS WITHOUT WRITTEN PERMISSION.

DRAWN:
C. SMITH

DATE:
03/19/2007

UNITS = inches

DO NOT SCALE FROM DRAWING

NorComp

SCALE:
NTS

SHEET OF
4 4

REV
25

DWG NO.

181-MYY-2YYRYYY