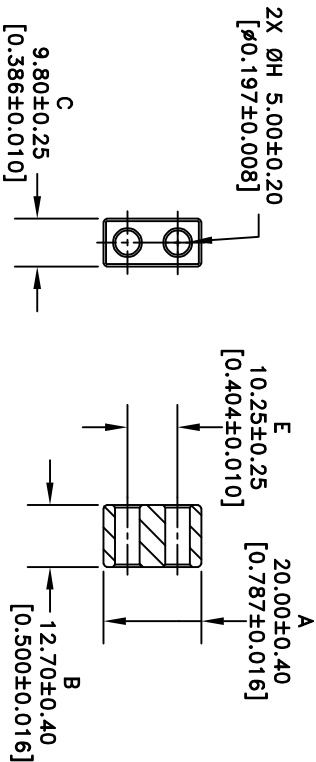


\*\* Not all features are shown in this drawing. For more detailed information, please contact your Fair-Rite representative.

UNCONTROLLED ~CATELOG~ DRAWING

SIZE	PART NO.	REV.
B	2867014302	~



ELECTRICAL SPECIFICATIONS				
$A_L$ (nH) ⊗ 10 KHz	$Q$ ⊗ 50 MHz	$A_L$ (nH) ⊗ 64 MHz	$Q$ ⊗ 64 MHz	$Q$ ⊗ 128 MHz
120 min	50 min	120 min	50 min	1.3 min
N = 5T-2H HP 4284A	N = 2T-2H E4991A/TF 16092A	N=1T-2H, #16 AWG, WL = 1.5" E4991A / TF 16092A		

Bold numbers are in millimeters,\*\* light numbers are in inches

FAIR-RITE PRODUCTS CORP.				
TITLE MULTI-APERTURE CORE				
DRAWN BY B. ANDERSON	DATE 09-25-2025	SIZE B	PART NO. 2867014302	REV. ~
CHKD BY		SCALE NONE	SHEET 1	of 1
APPRVD BY				

FR# 67