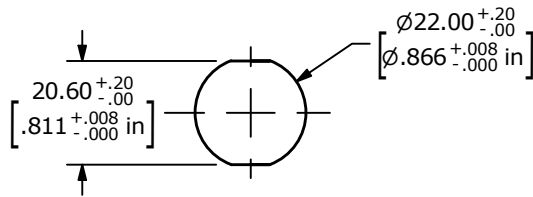
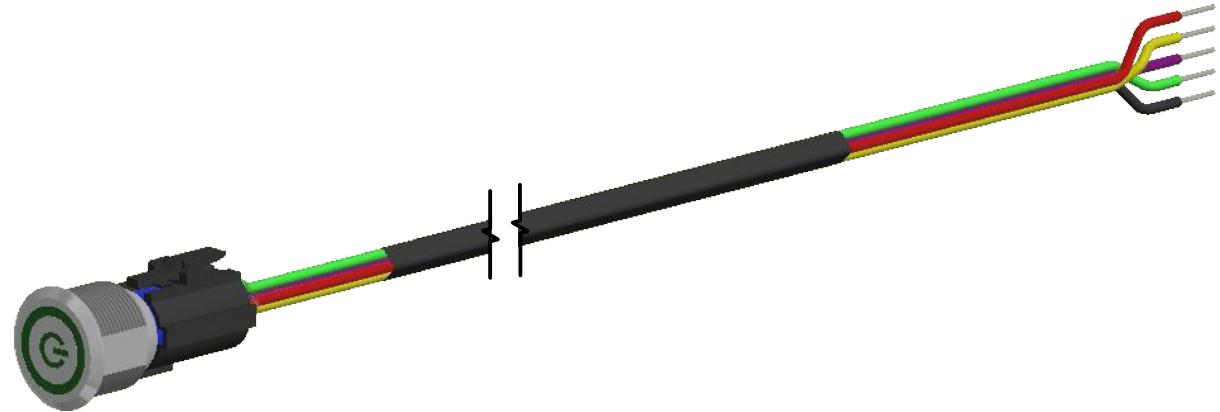


SCHEMATIC
ON - ON - SPDT ILLUMINATED

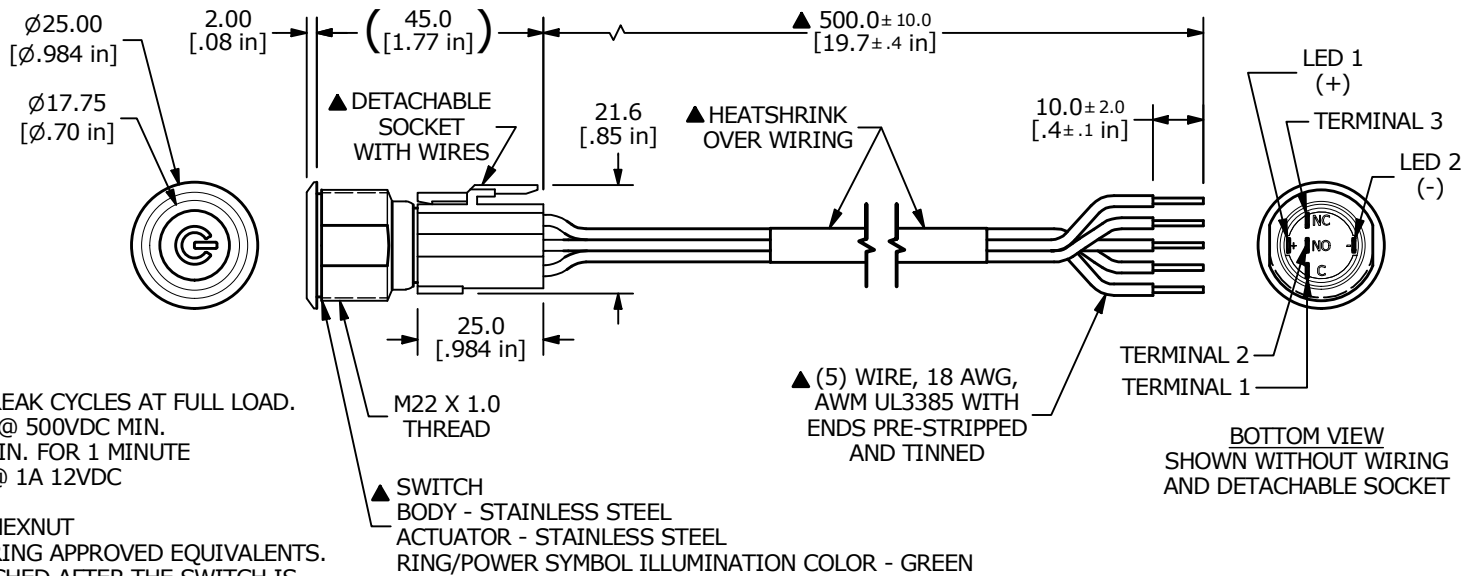
| SWITCH | WIRE | LENGTH |
|----------|---------------------------------|-----------------|
| SW1-1 | WIRE, 18 AWG AWM UL3385, YELLOW | 500.0 [19.7 in] |
| SW1-2 | WIRE, 18 AWG AWM UL3385, PURPLE | 500.0 [19.7 in] |
| SW1-3 | WIRE, 18 AWG AWM UL3385, GREEN | 500.0 [19.7 in] |
| SW1- (-) | WIRE, 18 AWG AWM UL3385, BLACK | 500.0 [19.7 in] |
| SW1- (+) | WIRE, 18 AWG AWM UL3385, RED | 500.0 [19.7 in] |



RECOMMENDED PANEL CUTOUT
MAX. PANEL THICKNESS 10.0 [.39 in]

NOTES:

1. DIMENSIONS IN MM [INCH]
2. GENERAL TOLERANCE: X.X = ± 0.4
X.XX = ± 0.25
3. TERMINAL NUMBERS FOR REF ONLY
- ▲ 4. CONTACT MATERIAL: GOLD PLATED
5. RATING: 3A 250 VAC cUL
6. OPERATING TEMP.: -20°C to 55°C
- ▲ 7. LAMP VOLTAGE: 20mA 110V
8. TRAVEL: 3.2mm
9. ACTUATION FORCE: 2.5 ± 1.0 N
10. MOUNTING NUT TORQUE: 5-14 Nm
11. INGRESS PROTECTION: IP67, IK10
12. MECHANICAL LIFE: 500,000 CYCLES.
13. ELECTRIC LIFE: 50,000 MAKE-AND-BREAK CYCLES AT FULL LOAD.
14. INSULATION RESISTANCE: 1,000 M Ω @ 500VDC MIN.
15. DIELECTRIC STRENGTH: 2,000 VAC MIN. FOR 1 MINUTE
16. CONTACT RESISTANCE: 50m Ω MAX. @ 1A 12VDC
17. ▲ DENOTES CRITICAL PARAMETER.
- ▲ 18. SUPPLIED HARDWARE: O-RING AND HEXNUT
- ▲ 19. USE P/N's DESIGNATED OR ENGINEERING APPROVED EQUIVALENTS.
- ▲ 20. DETACHABLE SOCKET MUST BE ATTACHED AFTER THE SWITCH IS SECURED TO THE PANEL WITH THE O-RING AND HEXNUT.



| REV | ECO NO | DESCRIPTION | DATE | BY |
|-----|------------|---------------------------------------|----------|----|
| B | ECO-101271 | MECHANICAL LIFE 500,000 WAS 1,000,000 | 09/21/22 | JS |
| | | | | |
| | | | | |



E-SWITCH®

OBJECT ID
100122668

TITLE
ULV7FP3SSG636

SCALE
2:3

DATE
8/29/2022

DR
JS

DWG
T970716

REV
B

THE INFORMATION CONTAINED IN THIS DOCUMENT IS PROPRIETARY TO
E-SWITCH AND IS NOT TO BE COPIED OR TRANSFERRED