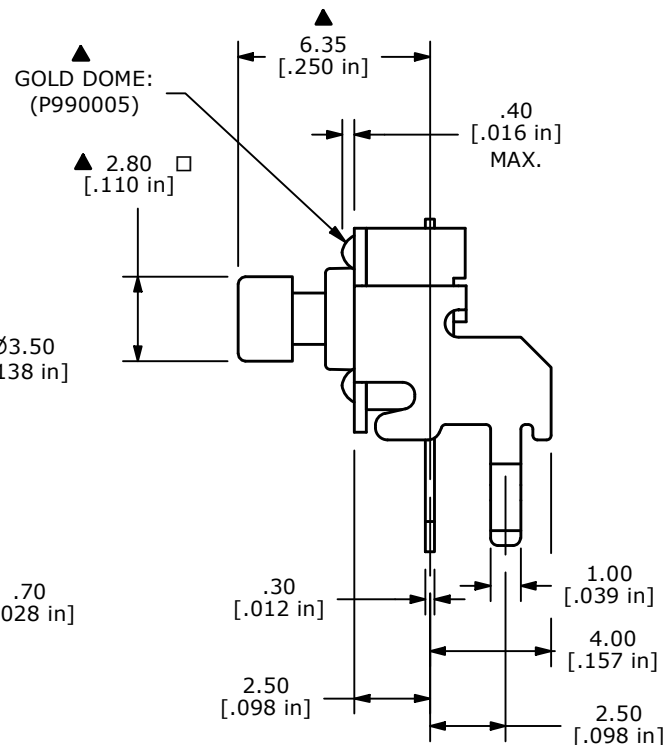
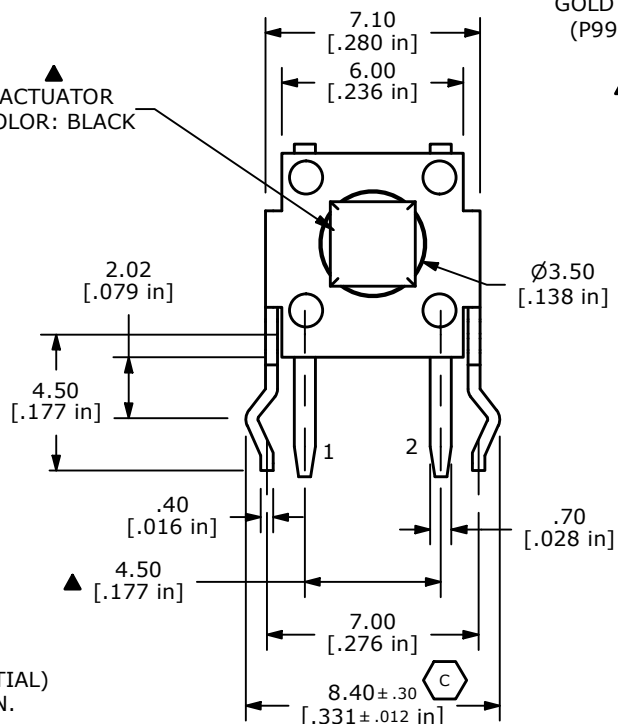


ACTUATOR  
COLOR: BLACK



NOTES:

1. ALL DIMENSIONS IN MM
2. GENERAL TOLERANCE: X.X=±0.4  
X.XX=±0.25
3. TERM. NOS. FOR REFERENCE ONLY.
4. RATING: 12VDC, 50mA
- ▲ 5. OPERATING FORCE: 160±50 gf
6. TRAVEL: 0.25 +0.2/-0.1 mm
7. CONTACT RESISTANCE: 100 MILLI OHMS MAX. (INITIAL)
8. MECHANICAL/ELECTRICAL LIFE 100,000 CYCLES MIN.
- ▲ 9. CONTACT MATERIAL: GOLD
10. ▲ DENOTES CRITICAL PARAMETER
11. OPERATING TEMP: -40°C TO 85°C

D	24548	REMOVE STEP IN HOUSING; CHANGE TEMP	10/19/20	JM
C	18313	LEG TOLERANCE WAS +/- 0.1	11/11/08	CT
B	16082	ADD GOLD DOME NOTE	6/5/06	CT
REV	PCR NO	DESCRIPTION	DATE	BY



TITLE TL1105JAF160R				
SCALE	DATE	DR	DWG	REV
4:1	11/11/2008	BLR	P010048	D

THE INFORMATION CONTAINED IN THIS DOCUMENT IS PROPRIETARY TO E-SWITCH AND IS NOT TO BE COPIED OR TRANSFERRED