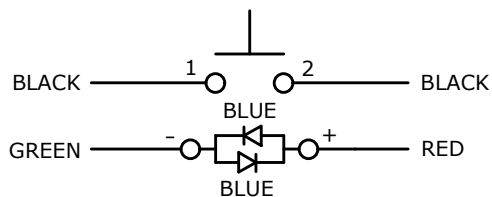
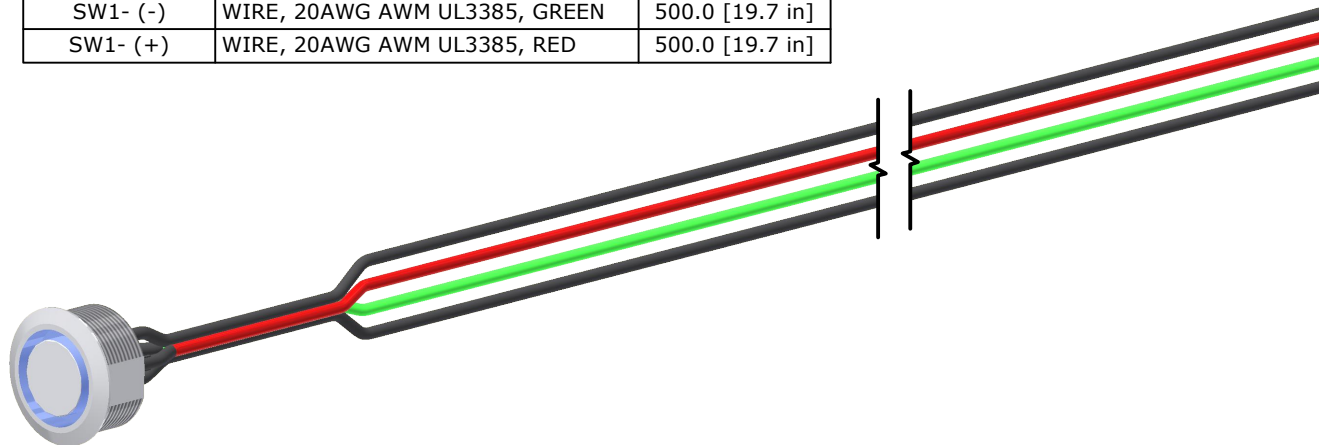


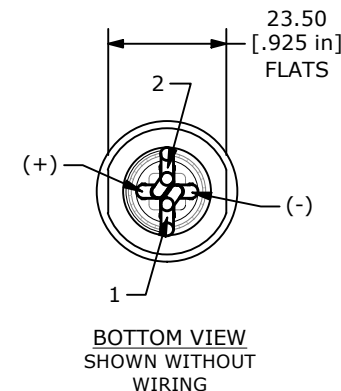
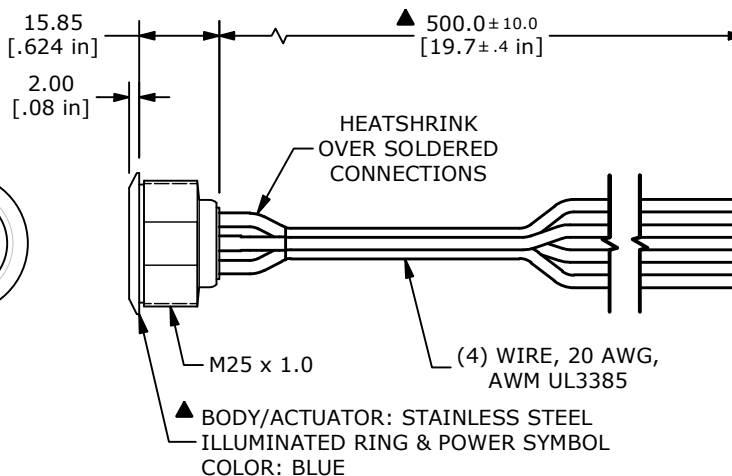
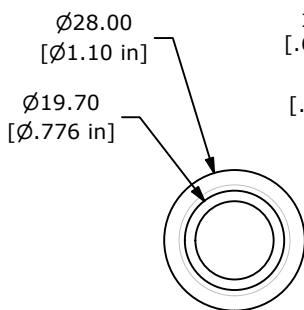
RECOMMENDED PANEL CUTOUT
 MAX. PANEL THICKNESS 1-6mm

SWITCH	WIRE	LENGTH
SW1-1	WIRE, 20AWG AWM UL3385, BLACK	500.0 [19.7 in]
SW1-2	WIRE, 20AWG AWM UL3385, BLACK	500.0 [19.7 in]
SW1- (-)	WIRE, 20AWG AWM UL3385, GREEN	500.0 [19.7 in]
SW1- (+)	WIRE, 20AWG AWM UL3385, RED	500.0 [19.7 in]



SCHEMATIC
 SPST - OFF-(ON)
 () DENOTES MOMENTARY

- NOTE:
1. ALL DIMENSIONS IN MM [INCH]
 2. GENERAL TOLERANCE: X.X = ±0.4
X.XX = ±0.25
 3. TERMINAL NUMBERS FOR REF ONLY
 4. CONTACTS: BRASS, COIN SILVER, GOLD FLASH
 5. TERMINALS: GOLD FLASH PLATED
 6. RATING: 2A 36VDC
 7. ELECTRIC LIFE: 200,000 CYCLES
 8. DIELECTRIC STRENGTH: 2,000 VAC MIN. FOR 1 MINUTE
 9. CONTACT RESISTANCE: 50mΩ MAX. @ 1A 12VDC
 10. OPERATING TEMP.: -20°C to 70°C
 11. ▲ DENOTES CRITICAL PARAMETER.
 - ▲ 12. LAMP VOLTAGE: BLUE 20mA 3.1V TYP.
 13. TRAVEL: 1.80mm
 14. ACTUATION FORCE: 4.5 ± 1.5 N
 15. MOUNTING NUT TORQUE: 1-3 Nm
 16. INGRESS PROTECTION: IP67, IK10
 17. HARDWARE SUPPLIED: O-RING AND HEXNUT



REV	ECO NO	DESCRIPTION	DATE	BY
B	ECO-103602	SV8 SERIES UPDATE	09/03/25	MR

			OBJECT ID 000026002	
TITLE SV8FW3SS-341				

<small>THE INFORMATION CONTAINED IN THIS DOCUMENT IS PROPRIETARY TO E-SWITCH AND IS NOT TO BE COPIED OR TRANSFERRED</small>				
SCALE	DATE	DR	DWG	REV
2:3	2/10/2021	MW	T880503	B