

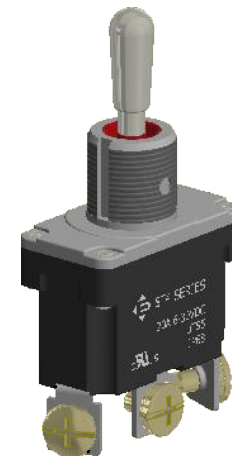
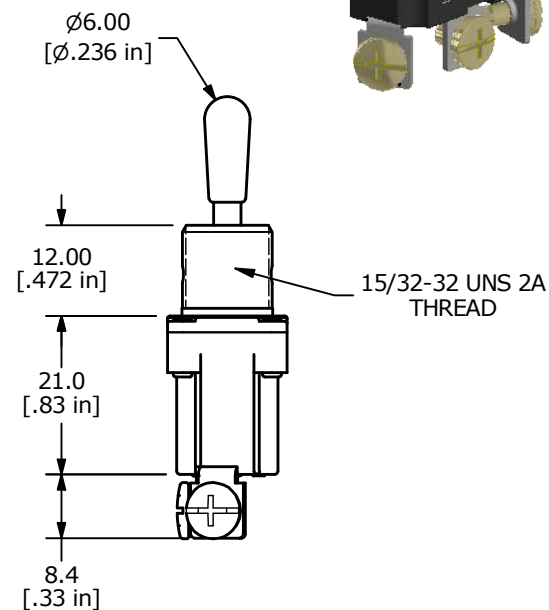
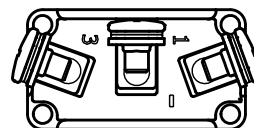
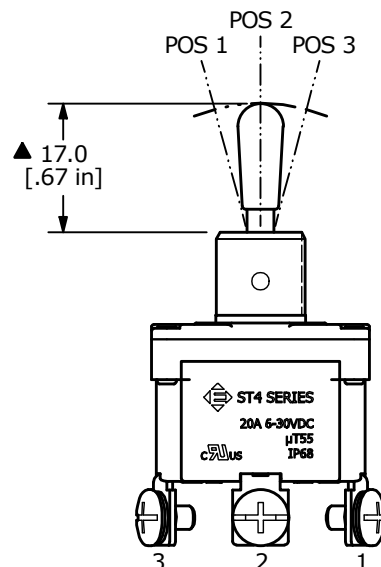
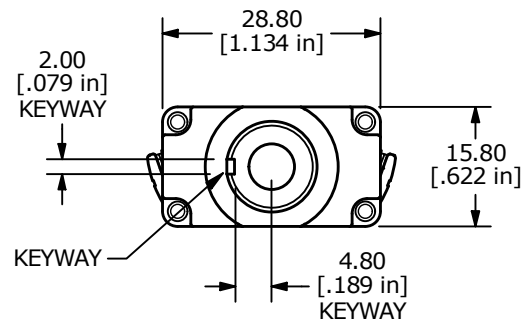
RECOMMENDED PANEL CUTOUTS

SWITCH FUNCTION		
POS. 1	POS. 2	POS. 3
(ON)	OFF	(ON)
1-2	OPEN	2-3

(ON) = MOMENTARY

## NOTES:

1. ALL DIMENSIONS IN MM [INCH]
2. GENERAL TOLERANCE: X.X =  $\pm 0.4$   
X.XX =  $\pm 0.25$
3. TERM. NUMBERS FOR REF. ONLY
- ▲ 4. RATING: 20A 6-30VDC  $\mu$ T55
5. ELECTRICAL LIFE: 6,000 CYCLES
6. CONTACT RESISTANCE: <20 MILLI-OHMS INITIAL
7. DIELECTRIC STRENGTH: >1,500V AC 1MIN
8. INSULATION RESISTANCE: >100MOHMS
9. OPERATING TEMP: -10°C to 55°C
10. INGRESS PROTECTION: IP68
11. ▲ DENOTES CRITICAL PARAMETER.
- ▲ 12. SUPPLIED HARDWARE: TOOTH WASHER and 2 HEXNUTS.



REV	ECO NO	DESCRIPTION	DATE	BY	E-SWITCH®				OBJECT ID
A	ECO-100970	Release	05/18/22	MW	TITLE ST4SP10DT1S2				100121966
					SCALE	DATE	DR	DWG	REV
					1:1	5/11/2022	MW	14-ST4SP10DT1S2	A

THE INFORMATION CONTAINED IN THIS DOCUMENT IS PROPRIETARY TO E-SWITCH AND IS NOT TO BE COPIED OR TRANSFERRED