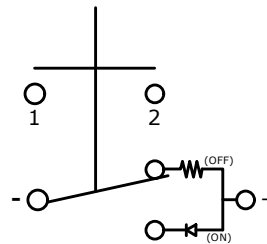
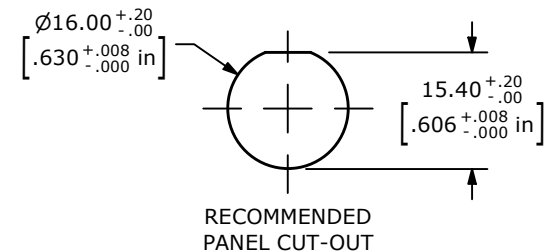


NOTE:

1. ALL DIMENSIONS IN MM [INCH]
2. GENERAL TOLERANCE: X.X = ±0.4
X.XX = ±0.25
3. TERMINAL NUMBERS FOR REF ONLY
4. CONTACT MATERIAL: COIN SILVER, GOLD FLASH PLATED
5. RATING: 2A 36VDC
6. ELECTRIC LIFE: 100,000
7. INSULATION RESISTANCE: 1,000MΩ MIN @ 500VDC.
8. DIELECTRIC STRENGTH: 2,000VAC MIN. FOR 1 MINUTE
9. CONTACT RESISTANCE: 50mΩ MAX. @ 1A 12VDC
10. OPERATING TEMP.: -20°C to 70°C
11. TRAVEL: 2.30mm ±0.40mm
12. OPERATING FORCE: 460 ±150gf
13. ▲ DENOTES CRITICAL PARAMETER.
- ▲ 14. ILLUMINATION COLOR: RED (ON POSITION)
- ▲ 15. ILLUMINATION VOLTAGE RATING: 3V @ 20mA
- ▲ 16. HARDWARE SUPPLIED: O-RING and HEXNUT (NOT SHOWN)
17. INGRESS PROTECTION: IP67



SCHEMATIC
OFF - ON
SPST LATCHING
ILLUMINATED



RECOMMENDED
PANEL CUT-OUT

REV	ECO NO	DESCRIPTION	DATE	BY	E-SWITCH®				OBJECT ID
B	ECO-100937	ILLUMINATION VOLTAGE RATING: 3V @ 20mA	04/26/22	MR	TITLE PVA6LRPW1111				000026276
					SCALE	DATE	DR	DWG	REV
					1:1	5/14/2020	MW	T960119	B

THE INFORMATION CONTAINED IN THIS DOCUMENT IS PROPRIETARY TO E-SWITCH AND IS NOT TO BE COPIED OR TRANSFERRED