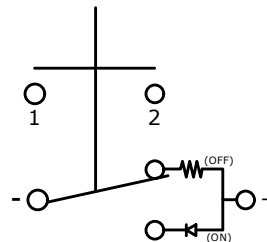
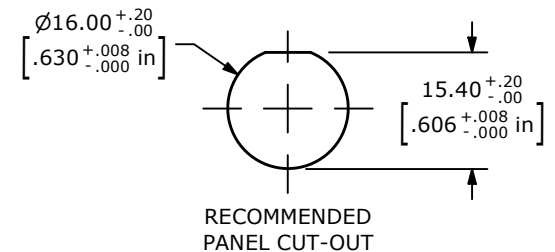



NOTE:

1. ALL DIMENSIONS IN MM [INCH]
2. GENERAL TOLERANCE: X.X = ±0.4
X.XX = ±0.25
3. TERMINAL NUMBERS FOR REF ONLY
4. CONTACT MATERIAL: COIN SILVER, GOLD FLASH PLATED
5. RATING: 2A 36VDC
6. ELECTRIC LIFE: 100,000
7. INSULATION RESISTANCE: 1,000MΩ MIN @ 500VDC.
8. DIELECTRIC STRENGTH: 2,000VAC MIN. FOR 1 MINUTE
9. CONTACT RESISTANCE: 50mΩ MAX. @ 1A 12VDC
10. OPERATING TEMP.: -20°C to 70°C
11. TRAVEL: 2.30mm ±0.40mm
12. OPERATING FORCE: 460 ±150gf
13. ▲ DENOTES CRITICAL PARAMETER.
- ▲ 14. ILLUMINATION COLOR: WHITE (ON POSITION)
- ▲ 15. ILLUMINATION VOLTAGE RATING: 3V @ 20mA
- ▲ 16. HARDWARE SUPPLIED: O-RING and HEXNUT (NOT SHOWN)
17. INGRESS PROTECTION: IP67



SCHEMATIC
OFF - ON
SPST LATCHING
ILLUMINATED



REV	ECO NO	DESCRIPTION	DATE	BY	<div> E-SWITCH®</div>					OBJECT ID 100116948	
B	ECO-100937	ILLUMINATION VOLTAGE RATING: 3V @ 20mA	04/26/22	MR	TITLE PVA6LRPW1101						
A	ECO-100166	RELEASE	06/09/21	JM							
THE INFORMATION CONTAINED IN THIS DOCUMENT IS PROPRIETARY TO E-SWITCH AND IS NOT TO BE COPIED OR TRANSFERRED					SCALE 1:1	DATE 6/8/2021	DR JM	DWG T960124	REV B		

THE INFORMATION CONTAINED IN THIS DOCUMENT IS PROPRIETARY TO E-SWITCH AND IS NOT TO BE COPIED OR TRANSFERRED