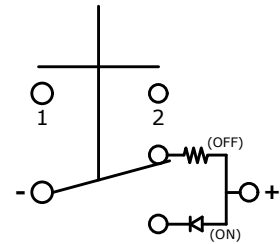
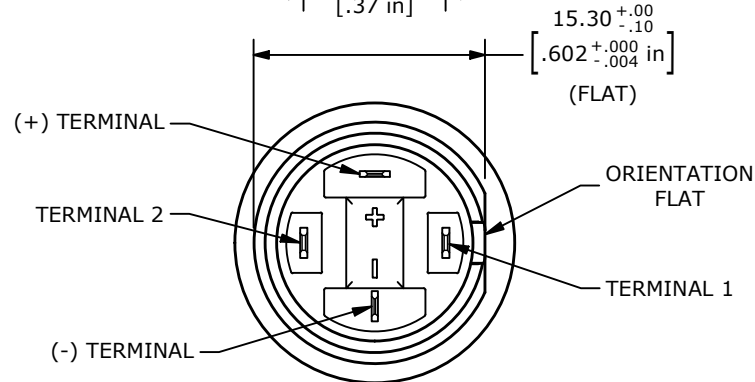
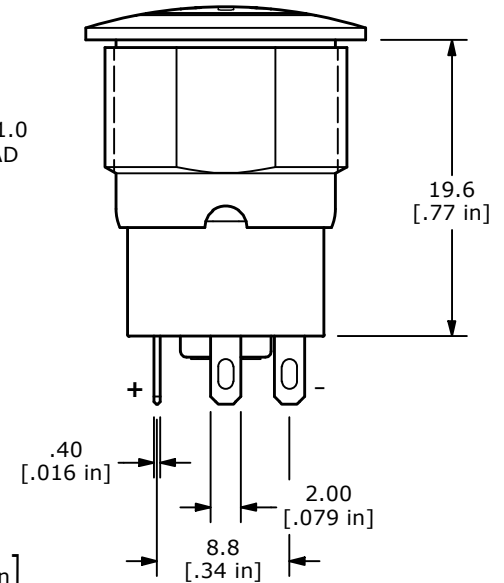
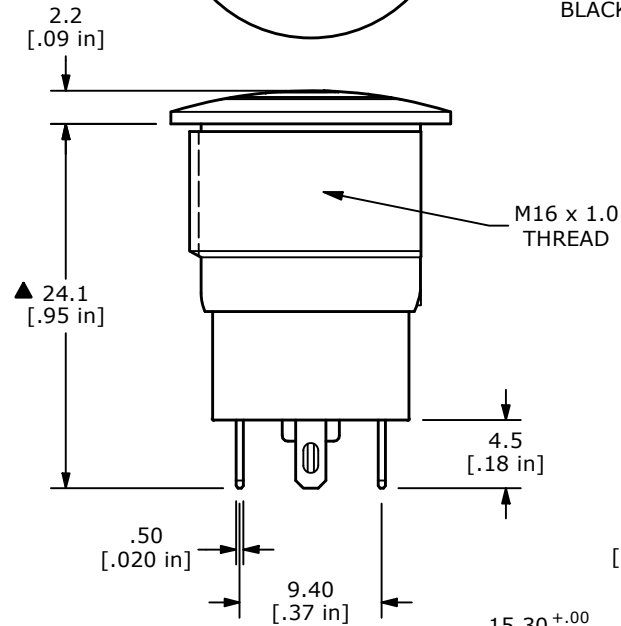
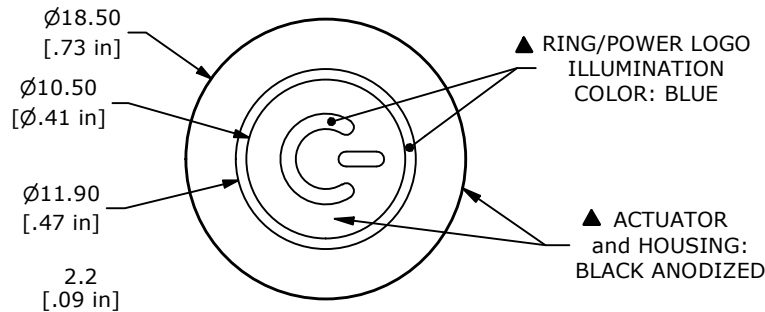
RECOMMENDED
PANEL CUT-OUT▲ SCHEMATIC
SPST
(OFF - ON LATCHING)

NOTE:

1. ALL DIMENSIONS IN MM [INCH]
2. GENERAL TOLERANCE: X.X = ± 0.4
X.XX = ± 0.25
3. TERMINAL NUMBERS FOR REF ONLY
4. CONTACT MATERIAL: COIN SILVER, GOLD FLASH PLATED
5. RATING: 2A 36VDC
6. ELECTRIC LIFE: 100,000 CYCLES
7. INSULATION RESISTANCE: 1,000M Ω MIN @ 500VDC.
8. DIELECTRIC STRENGTH: 2,000VAC MIN. FOR 1 MINUTE
9. CONTACT RESISTANCE: 50m Ω MAX. @ 1A 12VDC
10. OPERATING TEMP.: -20°C to 70°C
11. TRAVEL: 2.3 ± 0.40 mm
12. OPERATING FORCE: 460 ± 150 GRAMS
13. ▲ DENOTES CRITICAL PARAMETER.
- ▲ 14. ILLUMINATION COLOR: BLUE (ON POSITION)
- ▲ 15. ILLUMINATION VOLTAGE RATING: 3V @ 20mA
- ▲ 16. HARDWARE SUPPLIED: O-RING and HEXNUT (NOT SHOWN)
17. INGRESS PROTECTION: IP67



REV	ECO NO	DESCRIPTION	DATE	BY	E-SWITCH®				OBJECT ID
B	ECO-100927	ILLUMINATION VOLTAGE TO 3V @ 20 mA	04/20/22	MR	TITLE PVA6LRP21141				000026278
					SCALE	DATE	DR	DWG	REV
					2:1	6/5/2020	MW	T960121	B

THE INFORMATION CONTAINED IN THIS DOCUMENT IS PROPRIETARY TO
E-SWITCH AND IS NOT TO BE COPIED OR TRANSFERRED