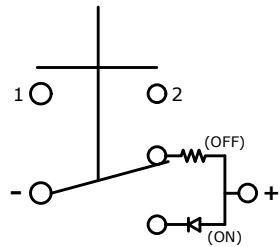
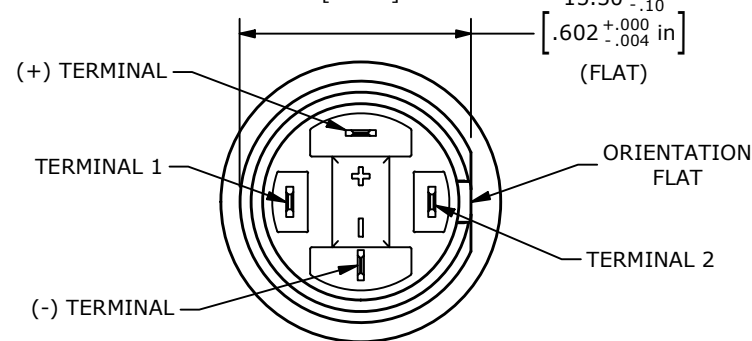
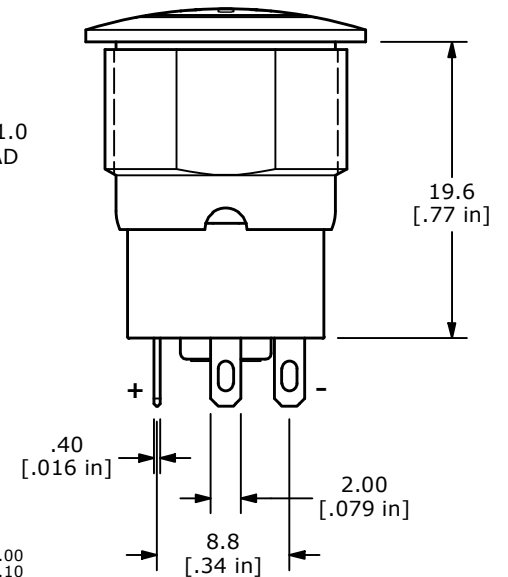
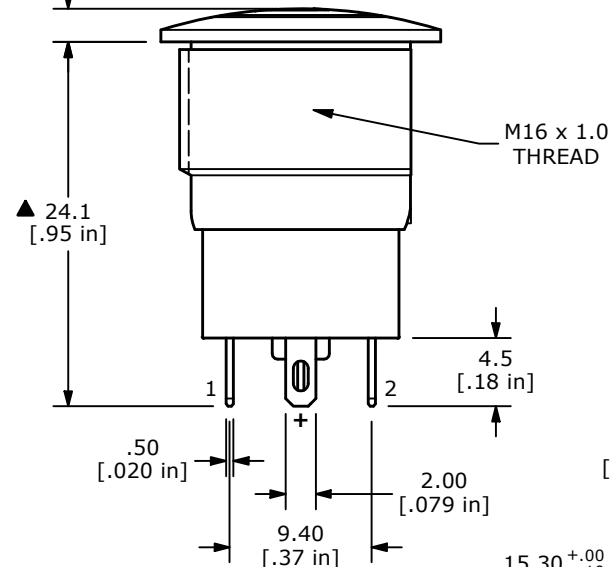
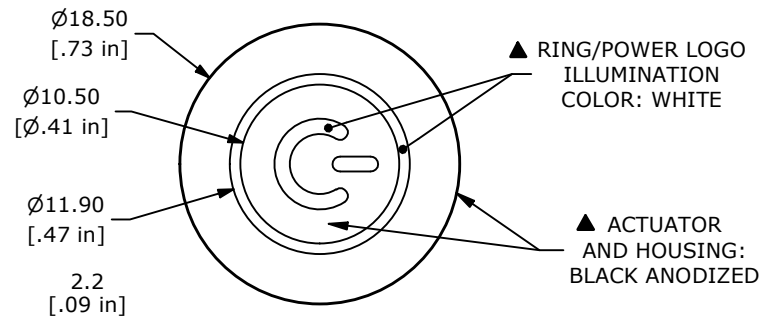
RECOMMENDED  
PANEL CUT-OUT▲ SCHEMATIC  
(OFF - ON LATCHING)

## NOTE:

1. ALL DIMENSIONS IN MM [INCH]
2. GENERAL TOLERANCE: X.X =  $\pm 0.4$   
X.XX =  $\pm 0.25$
3. TERMINAL NUMBERS FOR REF ONLY
4. CONTACT MATERIAL: COIN SILVER, GOLD FLASH PLATED
5. RATING: 2A 36VDC
6. ELECTRIC LIFE: 100,000
7. INSULATION RESISTANCE: 1,000M $\Omega$  MIN @ 500VDC.
8. DIELECTRIC STRENGTH: 2,000VAC MIN. FOR 1 MINUTE
9. CONTACT RESISTANCE: 50m $\Omega$  MAX. @ 1A 12VDC
10. OPERATING TEMP.: -20°C to 70°C
11. TRAVEL: 2.3  $\pm$  .40mm
12. ▲ DENOTES CRITICAL PARAMETER.
- ▲ 13. ILLUMINATION COLOR: WHITE (ON POSITION)
- ▲ 14. ILLUMINATION VOLTAGE RATING: 3V @ 20 mA
15. HARDWARE SUPPLIED: O-RING AND HEXNUT (NOT SHOWN)
16. INGRESS PROTECTION: IP67



REV	ECO NO	DESCRIPTION	DATE	BY	E-SWITCH®				OBJECT ID
B	ECO-100937	ILLUMINATION VOLTAGE RATING: 3V @ 20mA	04/26/22	MR					100120023
A	ECO-100557	Release	11/18/21	MW	TITLE PVA6LRP21101				
THE INFORMATION CONTAINED IN THIS DOCUMENT IS PROPRIETARY TO E-SWITCH AND IS NOT TO BE COPIED OR TRANSFERRED					SCALE 2:1	DATE 11/12/2021	DR MW	DWG T960130	REV B