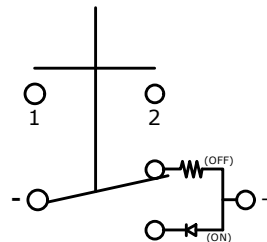
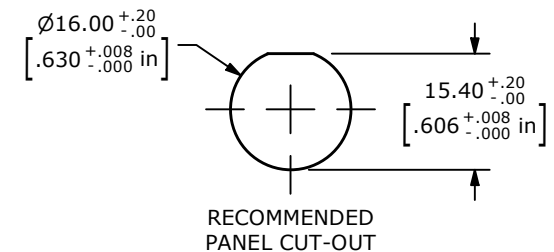


NOTE:

1. ALL DIMENSIONS IN MM [INCH]
2. GENERAL TOLERANCE: X.X = ±0.4
X.XX = ±0.25
3. TERMINAL NUMBERS FOR REF ONLY
4. CONTACT MATERIAL: COIN SILVER, GOLD FLASH PLATED
5. RATING: 2A 36VDC
6. ELECTRIC LIFE: 100,000
7. INSULATION RESISTANCE: 1,000MΩ MIN @ 500VDC.
8. DIELECTRIC STRENGTH: 2,000VAC MIN. FOR 1 MINUTE
9. CONTACT RESISTANCE: 50mΩ MAX. @ 1A 12VDC
10. OPERATING TEMP.: -20°C to 70°C
11. TRAVEL: 2.30mm ±0.40mm
12. ▲ DENOTES CRITICAL PARAMETER.
- ▲ 13. ILLUMINATION COLOR: RED (ON POSITION)
- ▲ 14. ILLUMINATION VOLTAGE RATING: 3V @ 20mA
15. HARDWARE SUPPLIED: O-RING AND HEXNUT (NOT SHOWN)
16. INGRESS PROTECTION: IP67
17. OPERATING FORCE: 460 ±150gf



SCHEMATIC
OFF - ON
SPST LATCHING
ILLUMINATED



| REV | ECO NO | DESCRIPTION | DATE | BY | E-SWITCH® | | | | OBJECT ID |
|-----|------------|------------------------------------|----------|----|--------------------|----------------|-------|-------------|-----------|
| B | ECO-100927 | ILLUMINATION VOLTAGE TO 3V @ 20 mA | 04/25/22 | MR | | | | | 100118897 |
| A | ECO-100390 | Release | 09/30/21 | MW | TITLE PVA6LREW1211 | | | | |
| | | | | | SCALE 1:1 | DATE 9/29/2021 | DR MW | DWG T960128 | REV B |

THE INFORMATION CONTAINED IN THIS DOCUMENT IS PROPRIETARY TO
E-SWITCH AND IS NOT TO BE COPIED OR TRANSFERRED