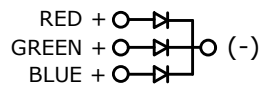
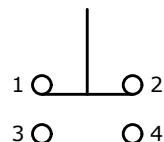


RECOMMENDED PANEL CUTOUT  
MAX. PANEL THICKNESS 12mm

▲ SWITCH FUNCTION

POS. 1	POS. 2
1-2 ON	1-2 (OFF)
3-4 OFF	3-4 (ON)

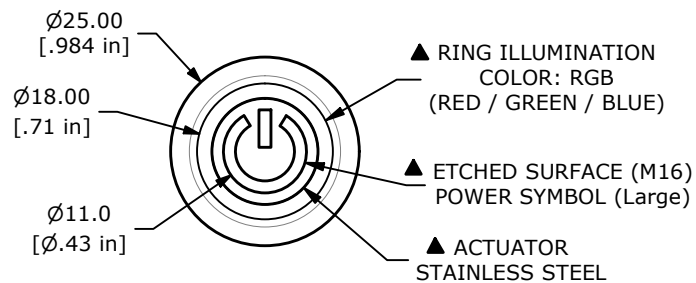
( ) = MOMENTARY



▲ SPDT ON-(OFF) / OFF-(ON)  
CONTACT CONFIGURATION

## NOTE:

1. ALL DIMENSIONS IN MM [INCH]
2. GENERAL TOLERANCE: X.X =  $\pm 0.4$   
X.XX =  $\pm 0.25$
3. TERMINAL NUMBERS FOR REF. ONLY
4. RATING: 2A @ 48VDC
5. CONTACT RESISTANCE: 50m $\Omega$  MAX. @ 1A 12VDC
6. INSULATION RESISTANCE: 1,000M $\Omega$  @ 500VDC
7. DIELECTRIC STRENGTH: 2,000VAC MIN. FOR 1 MINUTE
8. ELECTRICAL LIFE: 50,000 CYCLES
9. OPERATING TEMPERATURE: -35°C to 85°C
10. INGRESS PROTECTION: IP65
11. ▲ DENOTES CRITICAL PARAMETER
12. HARDWARE INCLUDED (NOT SHOWN) HEX NUT AND O-RING
13. ILLUMINATION VOLTAGE:  
RED: 1.8V  
GREEN: 2.8V  
Blue: 2.8V

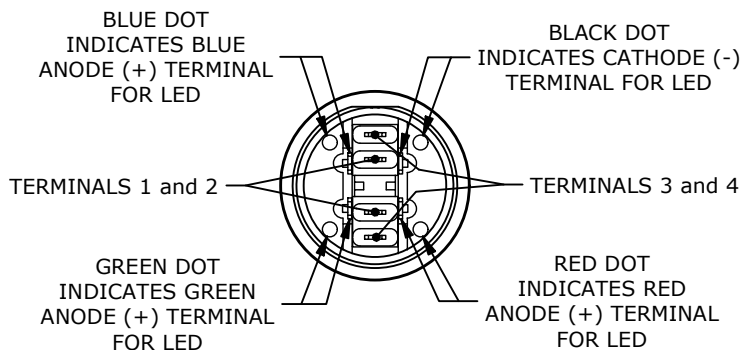
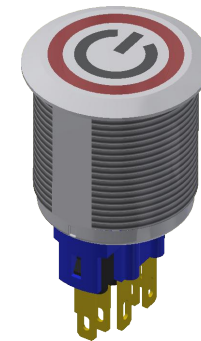
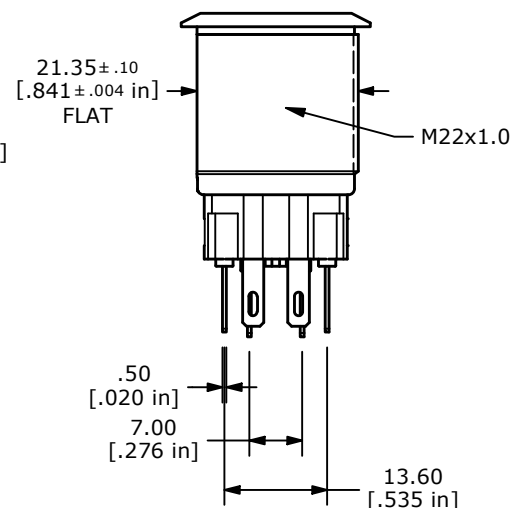
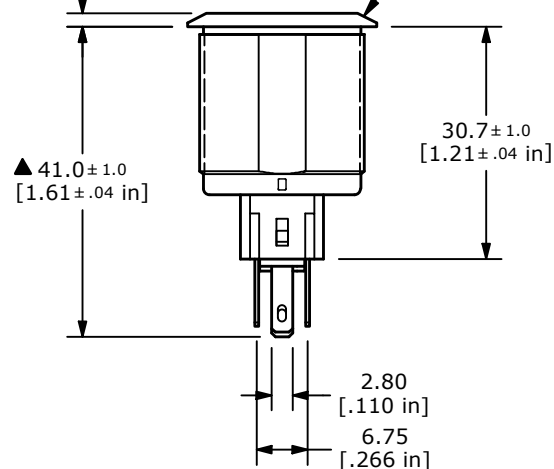


▲ RING ILLUMINATION  
COLOR: RGB  
(RED / GREEN / BLUE)

▲ ETCHED SURFACE (M16)  
POWER SYMBOL (Large)

▲ ACTUATOR  
STAINLESS STEEL

1.80 [0.07 in] ▲ BODY  
STAINLESS STEEL



REV	ECO NO	DESCRIPTION	DATE	BY	E-SWITCH®				OBJECT ID
B	ECO-103874	Print update	01/16/26	MW					000003037
					TITLE PV7F2Y0SS-3R1-M16				
					SCALE 1:1	DATE 9/5/2018	DR MW	DWG 52-PV7F2Y0SS3R1M16	REV B

THE INFORMATION CONTAINED IN THIS DOCUMENT IS PROPRIETARY TO  
E-SWITCH AND IS NOT TO BE COPIED OR TRANSFERRED