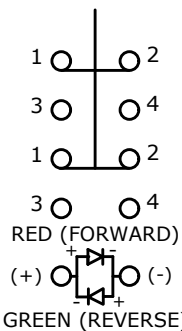


▲ SWITCH FUNCTION

POS. 1	POS. 2
1-2 ON 3-4 OFF	1-2 (OFF) 3-4 (ON)

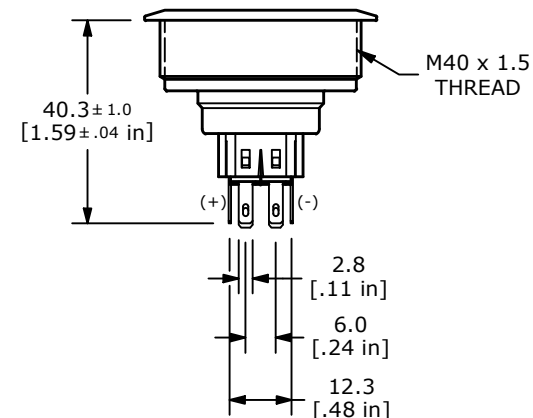
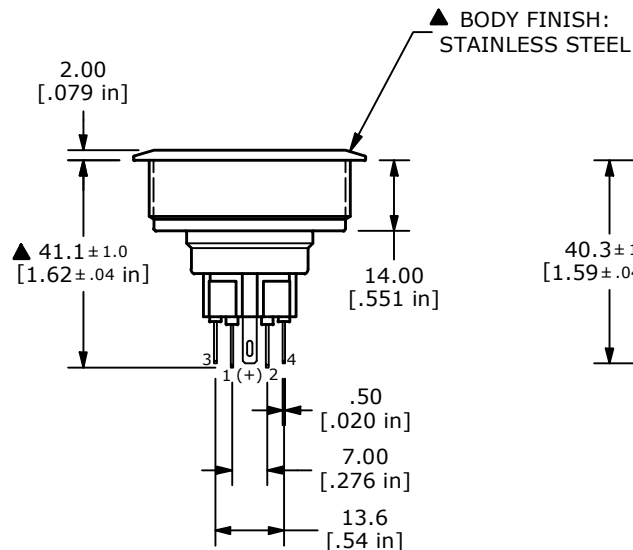
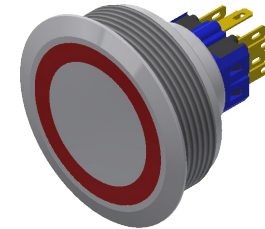
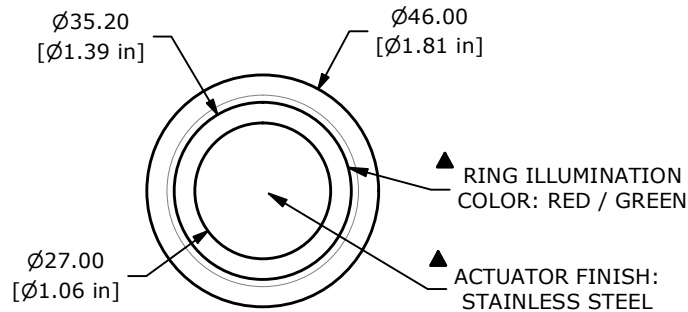
() = MOMENTARY



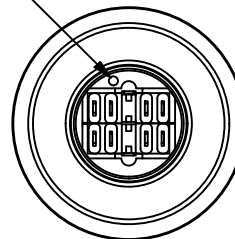
▲ DPDT ON (OFF) / OFF (ON)
CONTACT CONFIGURATION
() DENOTES MOMENTARY

NOTE:

1. ALL DIMENSIONS IN MM [INCH]
2. GENERAL TOLERANCE: X.X = ± 0.4
X.XX = ± 0.25
3. TERMINAL NUMBERS FOR REF. ONLY
4. RATING: 2A @ 48VDC
5. CONTACT RESISTANCE: 50m Ω MAX. @ 1A 12VDC
6. INSULATION RESISTANCE: 1,000M Ω @ 500VDC
7. DIELECTRIC STRENGTH: 2,000VAC MIN. FOR 1 MINUTE
8. ELECTRICAL LIFE: 50,000 CYCLES
9. OPERATING TEMPERATURE: -40°C TO 85°C
10. INGRESS PROTECTION: IP65
- ▲ 11. SUPPLIED HARDWARE: O-RING AND HEXNUT
12. ▲ DENOTES CRITICAL PARAMETER
- ▲ 13. ILLUMINATION VOLTAGE: 12V



DOT DENOTES
LED COLOR



REV	ECO NO	DESCRIPTION	DATE	BY	E-SWITCH®				OBJECT ID
C	ECO-103428	TEMP CHANGE -40C TO 85C WAS -20C TO 55C	08/05/25	JS	TITLE PV10F2V0SS-3G4				000002321
					SCALE	DATE	DR	DWG	REV
					2:3	5/10/2019	MW	52-PV10F2V0SS3G4	C

THE INFORMATION CONTAINED IN THIS DOCUMENT IS PROPRIETARY TO E-SWITCH AND IS NOT TO BE COPIED OR TRANSFERRED