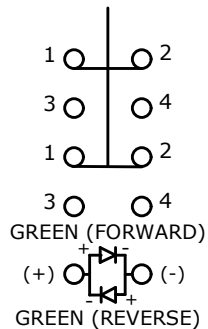


▲ SWITCH FUNCTION

POS. 1	POS. 2
1-2 ON 3-4 OFF	1-2 (OFF) 3-4 (ON)

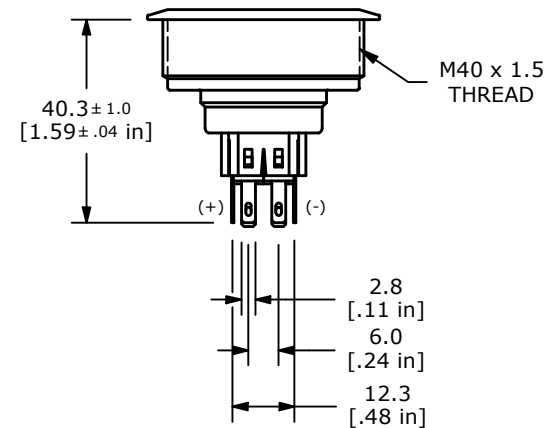
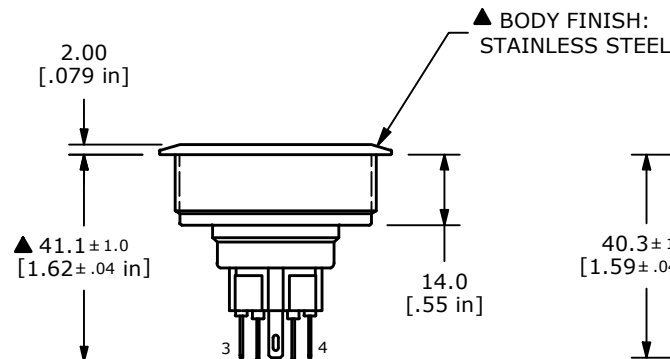
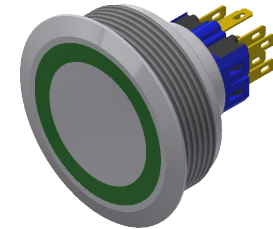
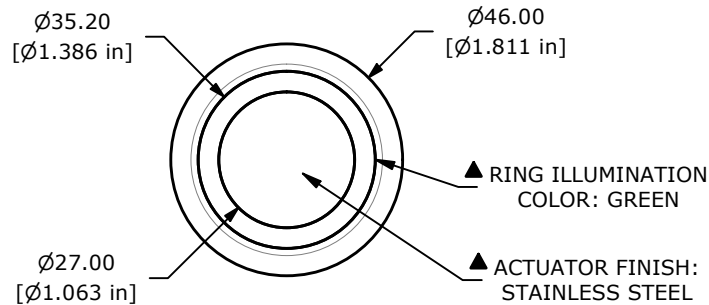
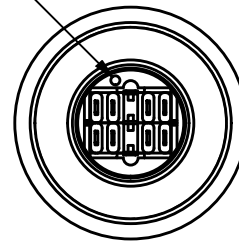
( ) = MOMENTARY



▲ DPDT ON (OFF) / OFF (ON)  
CONTACT CONFIGURATION  
( ) DENOTES MOMENTARY

## NOTE:

- ALL DIMENSIONS IN MM [INCH]
- GENERAL TOLERANCE: X.X =  $\pm 0.4$   
X.XX =  $\pm 0.25$
- TERMINAL NOS. FOR REF. ONLY
- RATING: 2A @ 48VDC
- CONTACT RESISTANCE: 50m $\Omega$  MAX. @ 1A 12VDC
- INSULATION RESISTANCE: 1,000M $\Omega$  @ 500VDC
- DIELECTRIC STRENGTH: 2,000VAC MIN. FOR 1 MINUTE
- ELECTRICAL LIFE: 50,000 CYCLES
- OPERATING TEMPERATURE: -40°C TO 85°C
- INGRESS PROTECTION: IP65
- ▲ 11. SUPPLIED HARDWARE: O-RING AND HEXNUT
- ▲ 12. ▲ DENOTES CRITICAL PARAMETER
- ▲ 13. ILLUMINATION VOLTAGE: 2.8V

DOT DENOTES  
LED COLOR

REV	ECO NO	DESCRIPTION	DATE	BY	E-SWITCH®				OBJECT ID
C	ECO-103428	TEMP CHANGE -40C TO 85C WAS -20C TO 55C	08/05/25	JS	TITLE PV10F2V0SS-331				000002319
					SCALE	DATE	DR	DWG	REV
					2:3	8/13/2018	MJR	52-PV10F2V0SS331	C

THE INFORMATION CONTAINED IN THIS DOCUMENT IS PROPRIETARY TO  
E-SWITCH AND IS NOT TO BE COPIED OR TRANSFERRED