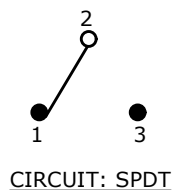
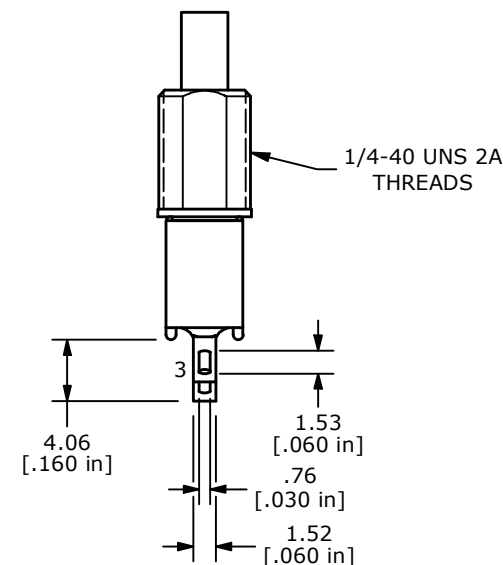
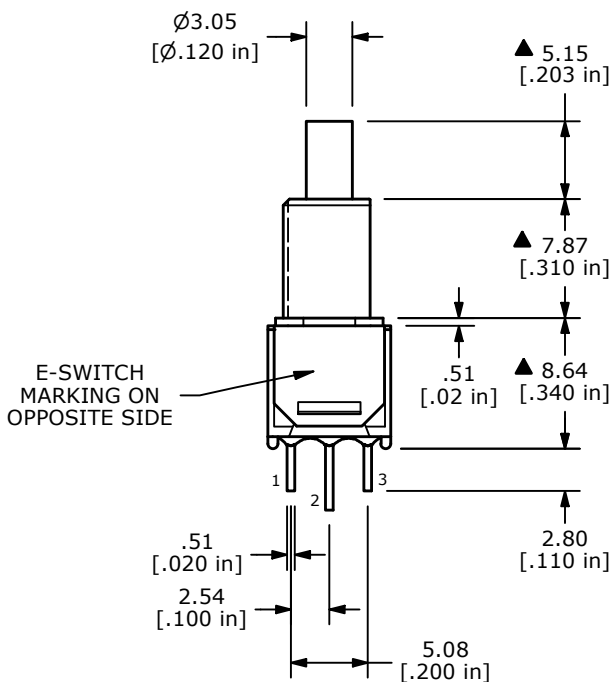
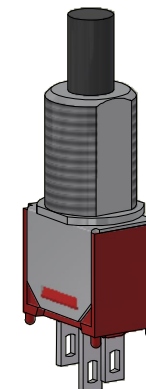
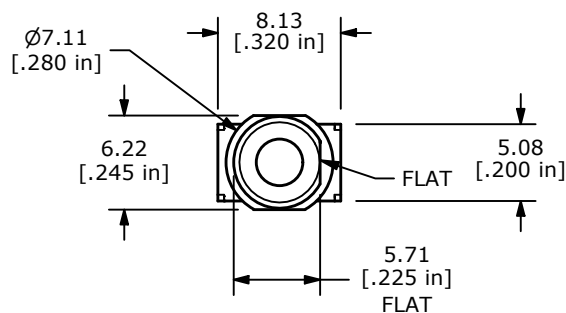


SWITCH FUNCTION	
POS. 1	POS. 2
ON	(ON)
2-1	2-3
(ON)=MOMENTARY	



NOTE:

1. ALL DIMENSIONS IN MM [INCH]
2. GENERAL TOLERANCE: X.X =  $\pm 0.4$   
X.XX =  $\pm 0.25$
3. TERMINAL NUMBERS FOR REF ONLY
- ▲ 4. CONTACT/TERMINALS: SILVER PLATED
5. RATING: 1A @ 250 VAC  
3A @ 120 VAC or 28 VDC
6. ELECTRICAL LIFE: 6,000 MAKE-AND-BREAK CYCLES
7. MECHANICAL LIFE: 50,000 MAKE-AND-BREAK CYCLES
8. CONTACT RESISTANCE: 20m $\Omega$  MAX. INITIAL @ 2-4VDC  
100mA FOR BOTH GOLD AND SILVER CONTACTS
9. INSULATION RESISTANCE: 1,000M $\Omega$  MIN.
10. ELECTRIC STRENGTH: 1,000 V RMS @ SEA LEVEL
11. OPERATING TEMP.: -40°C to 85°C
12. ▲ DENOTES CRITICAL PARAMETER.



REV	ECO NO	DESCRIPTION	DATE	BY	E-SWITCH®				OBJECT ID
F	ECO-103159	Print update	12/30/24	MW	TITLE 800SP8B9M1QE				000025895
					SCALE	DATE	DR	DWG	REV
					2:1	5/29/1996	MM	T822013	F

THE INFORMATION CONTAINED IN THIS DOCUMENT IS PROPRIETARY TO E-SWITCH AND IS NOT TO BE COPIED OR TRANSFERRED