

ND Series

Differential Middle Pressure Sensors Industrial Applications

- Highly integrated sensor with ADC and DSP
- Up to 7 Selectable Pressure Ranges per Device
- Pressure ranges ± 0.5 psi (34.5 mbar) to ± 150 psi (10.3 bar)
- 16-bit resolution (each selected range)
- Exceptional Zero Stability
- Integrated 50/60Hz Notch Filter
- Selectable Bandwidth Filter from 1.0Hz to 200Hz
- Output Data Rate at 444Hz
- Total Error Band less than 0.1% FSS
- Very High Accuracy $\pm 0.05\%$ of Selected Range
- Long Term Stability $\pm 0.05\%$ FSS
- Silicone gel protection on all models
- Temperature Compensated -20°C to 85°C
- Supply Voltage Compensation
- Fully Integrated Compensation Math
- Standard I²C and SPI Interface



Product Summary

Based on Superior's NimbleSense™ architecture, the ND Middle Pressure Series family supports operating temperature from -20°C to $+85^{\circ}\text{C}$, while increasing pressures up to ± 150 psi (10.3 Bar). Additionally, the ND utilizes the company's proprietary Multi-Range™ technology to create the industry's widest dynamic range. This wider dynamic range offers multiple pressure ranges in a single package thus minimizing the number of sensor variants required to support the demanding functional requirements of the various industrial market segments. For example, one Multi-Range enabled ND Sensor replaces up to 7 competing products greatly simplifying installation requirements and significantly lowering inventory costs.

Supporting pressure ranges as low as ± 0.5 psi (± 34.5 mbar) to as high as ± 150 psi (± 10.3 bar), the ND Middle Pressure Series is ideal for a wide variety of industrial applications.

The ND Middle Pressure Series measures dry air and non-aggressive gas pressure with very high accuracy and a stable zero point. The ND Middle Pressure Series has a selectable bandwidth filter from 1Hz to 200Hz, and 16-bit resolution. For added performance, the ND Series has

incorporated a 50/60Hz notch filter to minimize the impact of power noise spikes. The ND Series is an excellent choice for applications requiring the utmost reliability.

The ND Series provides a new level of integration combining an advanced piezoresistive sensing element with integrated amplification, ADC, DSP and a digital interface which greatly simplifies customer integration efforts. Advanced digital processing enables new functionality thus simplifying system development, streamlining manufacturing, and increasing reliability.

With optional integrated closed loop control customization, advanced digital filtering customization and a 3-mode pressure switch, the ND Series is more than a pressure sensor – it is a complete pressure sensing sub-system.

Constructed with a high reliability plastic enclosure, the ND Series family provides the ideal combination of very high performance and reliability at extended temperature ranges while ensuring customers have a high-volume, cost-effective solution optimized for a wide array of industrial requirements.

Table of Contents

1	Maximum Ratings.....	2
2	Suggested Operating Conditions	2
3	Environmental	2
4	Equivalent Circuit.....	2
5	Feature List	3
6	Performance Characteristics	4
7	Electrical Characteristics.....	4
7.1	Supply Characteristics.....	4
7.2	Reset Characteristics	5
7.3	DAV Characteristics	5
7.4	I ² C Characteristics	5
7.5	SPI Characteristics	6
8	Materials.....	6
8.1	Wetted Materials.....	6
8.2	Material Compliance	6
9	System Overview	7
10	Interface	8
10.1	Reset	8
10.2	Communication Interface Selection	8
10.3	SPI Interface.....	8
10.4	I ² C Interface	9
10.4.1	I ² C Address	9
10.4.2	I2C Communications Model.....	9
10.4.3	I ² C Clock Stretching	10
10.4.4	I ² C Bus Compatibility.....	10
10.5	Extended Data Acquisition	10
10.5.1	Available Extended Data	10
10.5.2	SPI Extended Data Read.....	10
10.5.3	I ² C Extended Data Read	10
10.6	Control Registers	11
10.6.1	Mode Control Register.....	11
10.6.2	Rate Control Register	12
10.7	Computing Pressure	12
11	Mechanical	13
11.1	Package Dimensions	13
11.2	Suggested Pad Layout.....	13
11.3	Pinout	14
12	Manufacturing.....	14
12.1	Reflow Soldering and Handling Conditions	14
12.2	Pick and Place Pick-up Zone	14
13	Packaging and Labeling.....	15
13.1	Tray Packaging	15
13.2	Tape and Reel	16
13.3	Part Identification	16
13.4	Packaging Labels	17
14	Ordering Information	17
15	Revisions.....	18
16	Warranty.....	18

1 Maximum Ratings

Parameter	Sym	Min	Max	Units
Supply Voltage	V _{DDM}	Gnd-0.3	4.0	V
Voltage on I/O Pins				
V _{DD} > 3.3V	V _{IOML}	Gnd-0.3	5.8	V
V _{DD} ≤ 3.3V	V _{IOMH}	Gnd-0.3	V _{DD} +2.5	V
I/O Current	I _{IOM}	-25	25	mA

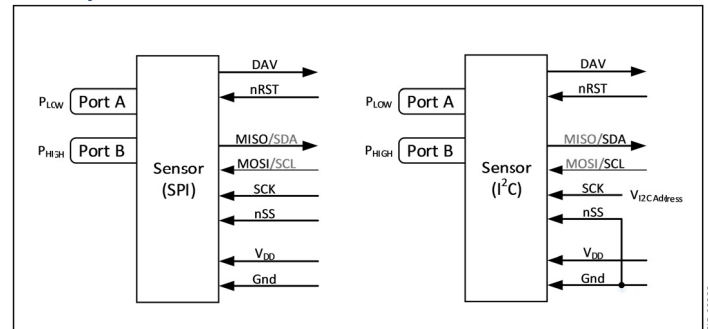
2 Suggested Operating Conditions

Parameter	Sym	Min	Max	Units
Supply Voltage	V _{DDOP}	2.8	3.5	V
Temperature	T _A	-20	85	°C

3 Environmental

Parameter	Sym	Min	Max	Units
Temperature Range				
Compensated	T _{COMP}	-20	85	°C
Operating	T _{OP}	-20	85	°C
Storage	T _{STG}	-40	85	°C
Humidity (Non-condensing)	RH _{OP}	0	95	% RH
Vibration (10Hz-2kHz)	G _{VIBE}	-	15	g
Shock (6 ms)	G _{SHOCK}	-	100	g
Life	CY _{LIFE}	10M	-	Pressure Cycles

4 Equivalent Circuit



5 Feature List

Middle Pressure (psi Ranges)

Parameter	Sym	ND005D	ND015D	ND030D	Units	Notes
Number of FS Pressure Ranges	P _{NUM}	6	6	6	Each	
Specified FS Range Extents	P _{EXT}	±0.5 to ±5	±1.0 to ±15	±5.0 to ±30	psi	
Number of BW Filter Corners	BW _{NUM}	8			Each	
BW Corner Frequency Extents	f _{BWEXT}	1.0 to 200			Hz	
Common Mode Pressure	P _{CM}	25	25	25	psi	1
Proof Pressure	P _{PROOF}	15	35	100	psi	2
Burst Pressure	P _{BURST}	17	40	125	psi	3

Middle Pressure Cont'd (psi Ranges)

Parameter	Sym	ND060D	ND100D	ND150D	Units	Notes
Number of FS Pressure Ranges	P _{NUM}	7	7	6	Each	
Specified FS Range Extents	P _{EXT}	±10 to ±60	±40 to ±100	±50 to ±150	psi	
Number of BW Filter Corners	BW _{NUM}	8			Each	
BW Corner Frequency Extents	f _{BWEXT}	1.0 to 200			Hz	
Common Mode Pressure	P _{CM}	25	25	25	psi	1
Proof Pressure	P _{PROOF}	150	200	250	psi	2
Burst Pressure	P _{BURST}	175	250	300	psi	3

- 1) Pressure applied to both ports simultaneously without incurring part damage.
- 2) Pressure at which the sensor will not suffer permanent damage.
- 3) Pressure if exceeded could cause permanent damage to the sensor.

ND Series

Industrial Middle Pressure Sensors

6 Performance Characteristics

Note: Unless otherwise specified, characteristics specified with $V_{DD} = 3.3V$, $T_A = 25C$

Parameter	Sym	All Series Devices			Units	Notes
		Min	Typ	Max		
Accuracy	P_{ACC}	-	0.05	0.2	% RNG	1, 2
Total Error Band	TEB	-	0.1	0.5	% FSS	3, 4
TEB After AZ	TEB_{AZ}	-	0.05	0.3	% FSS	8
Long Term Stability	LTS	-	0.05	0.15	% FSS/YR1	3, 9
Thermal Hysteresis	T_{HYS}	-	0.05	-	% FSS	3
Pressure Hysteresis	P_{HYS}	-	0.05	-	% RNG	1
Supply Rejection	P_{SR}	-	0.0002	-	% FSS/mV	3
Resolution	RES	-	16	-	bit	5
System ENOB	ENOB	-	17	-	Bit _{RMS}	6
Data Update Rate	f_{UPDATE}	432	444	456	Hz	7

1) Percentage of the selected pressure range. For example, if you select 1 psi pressure with the ND005D, typical accuracy will be 0.05% x 2 psi {range of -1 psi to +1 psi} = 0.001 psi.

2) Uncertainty limited by system noise for ranges of 0.5 inH₂O and below.

3) Percent of the device's full span scale. For example, the ND005D has a full scale span of 10 psi {from -5 psi to +5 psi} with a typical TEB of 0.10% x 10 psi = 0.01 psi.

4) Includes errors of offset, span, pressure non-linearity, hysteresis, and non-repeatability, and thermal effects on offset, span and hysteresis.

5) Each selected range has the specified resolution

6) ENOB stated for f_{BW} set to 1.0 Hz.

7) The internal update rate is fixed and does not change with range or filter settings. Sampling at lower data rates are possible provided the Nyquist frequency is observed. It is suggested to sample at least 3x the set f_{BW} frequency.

8) Total error band within 24 hours of a sensor auto-zero. Includes all error components of TEB.

9) YR1 is the first year. The most significant drift occurs during the first year and is lessened for each subsequent year. The drift is lessened over time in such a way that at YR10, the total typical drift is only twice that of YR1.

7 Electrical Characteristics

7.1 Supply Characteristics

Parameter	Sym	All Series Devices			Units	Notes
		Min	Typ	Max		
Supply Current	I_{DD}	-	5.0	5.5	mA	
Supply Capacitance	C_{DD}	-	10	-	uF	1

1) Supply capacitance is provided within the part however it is recommended to include a 0.1 uF decoupling cap near the supply pads.

7.2 Reset Characteristics

Parameter	Sym	Condition	All Series Devices			Units	Notes
			Min	Typ	Max		
Power-On Reset Threshold	V_{PORR} V_{PORF}	Rising Voltage on V_{DD}	-	1.4	-	V	
		Falling Voltage on V_{DD}	0.75	-	1.36	V	
Interface Detect Delay	t_{IOD}	From POR or External Reset	-	-	40	ms	
First Response Settling Time	t_{FRD}	From POR or External Reset	-	-	80	ms	1
External Reset Low	t_{RSTL}		15	-	-	us	
Input High Voltage	V_{IH}		$V_{DD}-0.6$	-	-		2
Input Low Voltage	V_{IL}		-	-	0.6		2
Internal Pull-Up Current	I_{PU}	$V_{IN} = 0V$	-	-20	-30	uA	2
Input Capacitance	C_{IN}		-	7	-	pF	2

1) The filter settling time to ensure the first reading is completely settled.

2) Input nRST

7.3 DAV Characteristics

Parameter	Sym	Condition	All Series Devices			Units	Notes
			Min	Typ	Max		
Output High Voltage	V_{OH}	$I_O = -3 \text{ mA}$	$V_{DD}-0.7$	-	-	V	
Output Low Voltage	V_{OL}	$I_O = 8 \text{ mA}$	-	-	0.6	V	

7.4 I²C Characteristics

Parameter	Sym	Condition	All Series Devices			Units	Notes
			Min	Typ	Max		
SCL Clock Frequency	f_{SCL}		100	-	250	kHz	
Clock Stretch Time	t_{CKSTR}		-	15	100	us	
Input High Voltage	V_{IH}		$V_{DD}-0.6$	-	-		
Input Low Voltage	V_{IL}		-	-	0.6		
Output Low Voltage	V_{OL}	$I_O = 8 \text{ mA}$	-	-	0.6	V	
Input Capacitance	C_{IO}		-	7	-	pF	

7.5 SPI Characteristics

Parameter	Sym	Condition	All Series Devices			Units	Notes
			Min	Typ	Max		
Output High Voltage	V_{OH}	$I_O = -3 \text{ mA}$	$V_{DD}-0.7$	-	-	V	1
Output Low Voltage	V_{OL}	$I_O = 8 \text{ mA}$	-	-	0.6	V	1
Input High Voltage	V_{IH}		$V_{DD}-0.6$	-	-		2, 3
Input Low Voltage	V_{IL}		-	-	0.6		2, 3
Internal Pull-Up Current	I_{PU}	$V_{IN} = 0V$	-	-10	-30	uA	2, 3
Time nSS to First SCK Edge	t_{SC}		100	-	-	us	
Clock Cycle Time	t_{CC}		6	-	-	us	
Byte to Byte Cycle Time	t_{BC}		100	-	-	us	
Time Last Clock to nSS High	t_{CN}		20	-	-	us	
Cycle Time nSS	t_{CS}		6	-	-	us	
Input Capacitance	C_{IN}		-	7	-	pF	2

1) Output MOSI

2) Inputs MISO, SCK, nSS

3) Inputs are 5V compliant.

8 Materials

8.1 Wetted Materials

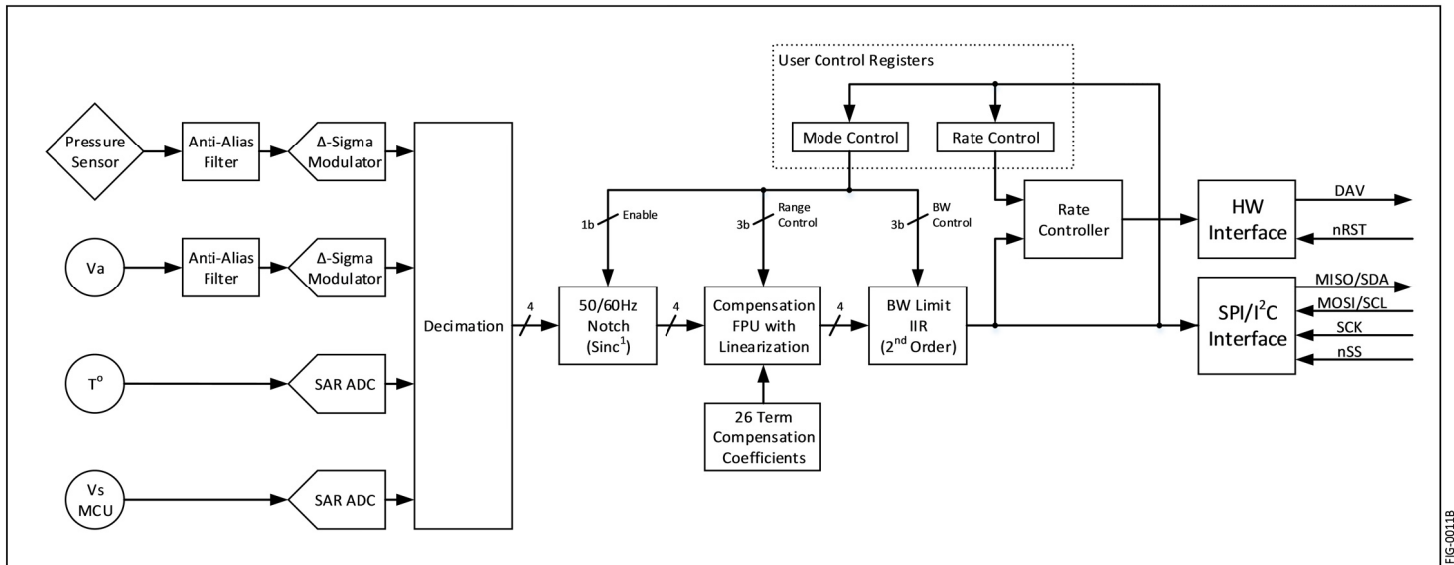
Parameter	Sym	All Series Devices		Units	Notes
		P_A	P_B		
Wetted Materials	MAT_{WET}	Epoxy Nylon RTV Silicon	Epoxy Nylon RTV Silicon Gold Sil-Gel		

8.2 Material Compliance

Parameter	Sym	All Series Devices	Units	Notes
RoHS	REG_{RoHS}	RoHS Compliant		
REACH	REG_{REACH}	REACH Compliant		

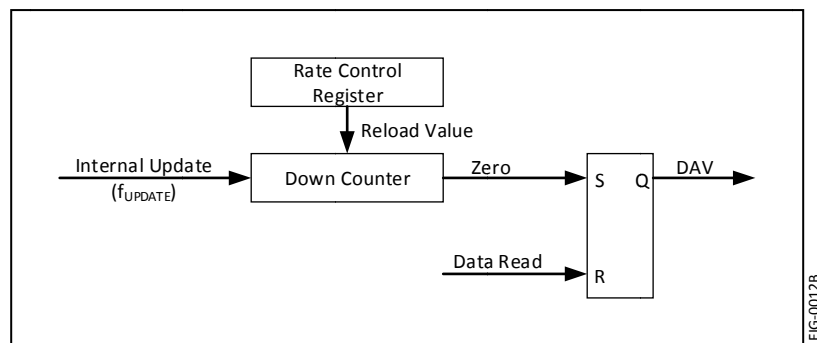
9 System Overview

The ND Series pressure sensor is a fully integrated pressure acquisition system in a sensor module. The acquisition system includes anti-alias filters, data acquisition, 50/60Hz notch filter, sensor compensation, bandwidth limiting and I/O functions. Refer to the figure below for the ND Series block diagram.



There are also two user controlled registers that tune the sensor to the specific user requirements. The first register is the Mode Control register that determines the output pressure range, the corner frequency of the bandwidth limiting filter and enables or disables the 50/60Hz notch filter.

The second register is the Rate Control register which controls the rate at which the Data Available (DAV) pin is asserted. The internal sensor data update rate of 444 Hz is often much faster than industrial requirements so the Rate Control register can throttle down the rate at which the Data Available pin (DAV) is asserted. The DAV is reset upon each read of the pressure sensor. An internal model of the Rate Controller is illustrated in the figure to the right.



ND Series

Industrial Middle Pressure Sensors

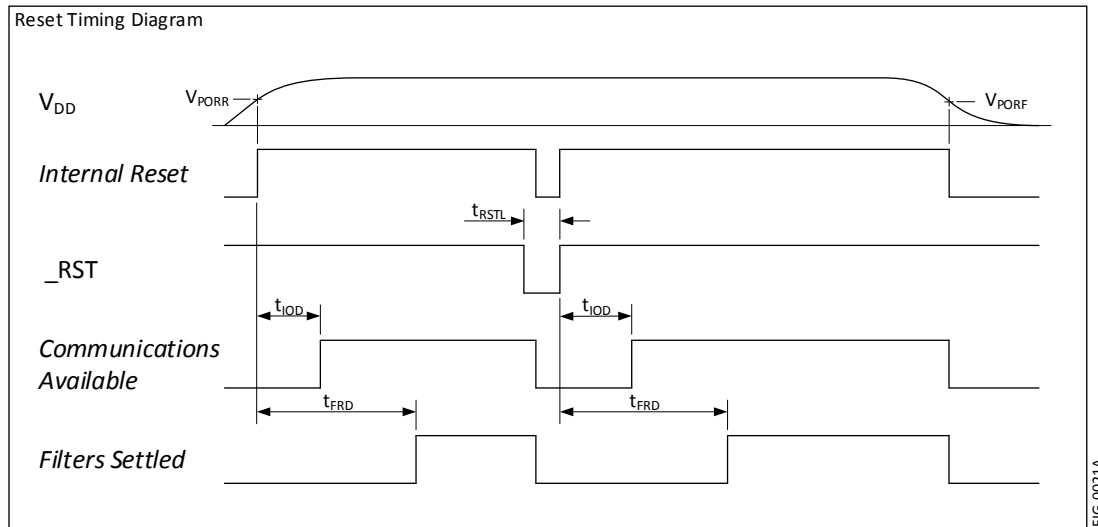
10 Interface

10.1 Reset

Reset timing is shown in the diagram below.

The communications method (SPI or I²C) is established during the time just after reset. During this time (t_{IOD}), no communications should take place.

Also, the internal filters are settling during the time t_{FRD} and data acquired during this time may not be fully settled.

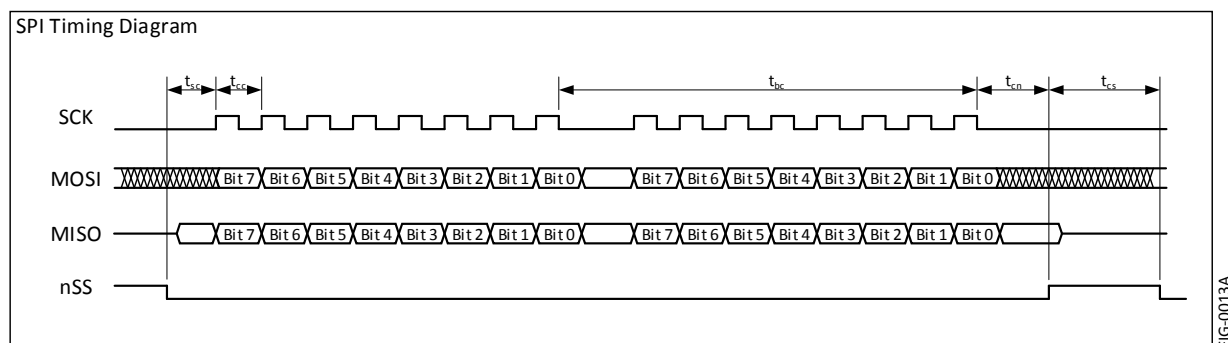


10.2 Communication Interface Selection

The communications interface is selected by interrogating the nSS pin after the internal power on reset delay. If nSS is high, the SPI interface will be selected otherwise (if low) the I²C interface will be selected. Grounding the nSS pin is an acceptable method for selecting the I²C interface. NOTE: The I²C interface supports 10 interface addresses. Refer to section 10.4.1 for the details on I²C address selection.

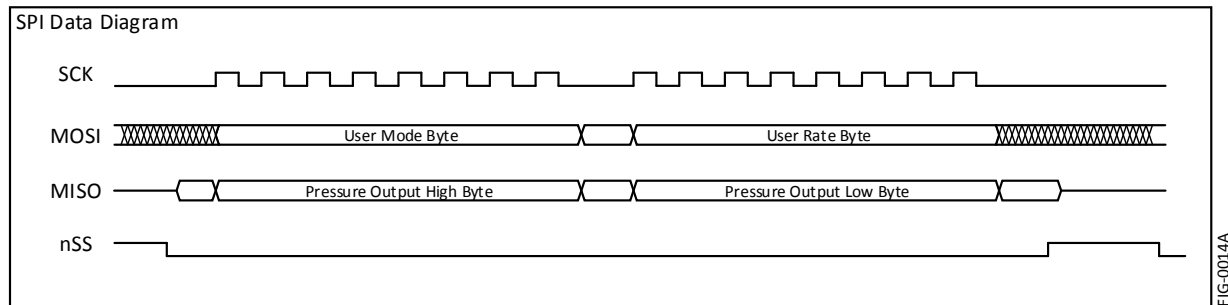
10.3 SPI Interface

The SPI interface uses a 16 bit transfer for all communications. Data is MSB first for both MOSI and MISO data transfers. Refer to the figure below for specific timing requirements.



The data communications has been reduced to a simple 16 bit transfer model for reading the pressure output. Each communication cycle consists of master sending the Mode and Rate data to be placed into the sensor Mode Register and Rate Registers respectively. Simultaneously, the sensor sends the pressure data for the master to receive. Refer to the figure below for the data communication model of the ND Series sensor.

The requirement to send the Mode and Rate bytes on each data read cycle is intentional. The purpose is to force the master to send specific data for each communication and prevent inadvertent data from being sent to the sensor. Since a SPI interface will generally re-circulate data through its shift register, the intention is to prevent the pressure output from the sensor from being re-circulated back to the sensor and potentially causing unintended corruption of the intended mode register.



10.4 I²C Interface

The ND Series is compatible with the I²C protocol. For detailed information regarding the I²C protocol, please refer to the Philips I²C Bus Specification, Version 2.

10.4.1 I²C Address

I2C Address Selection Table			
R1 (kΩ)	R2 (kΩ)	Address (decimal)	Address (hex)
120	5.6	49	0x31
120	12	48	0x30
120	27	47	0x2F
120	51	46	0x2E
120	100	45	0x2D
56	100	44	0x2C
30	100	43	0x2B
15	100	42	0x2A
5.6	100	41	0x29
0	NoPop	40	0x28

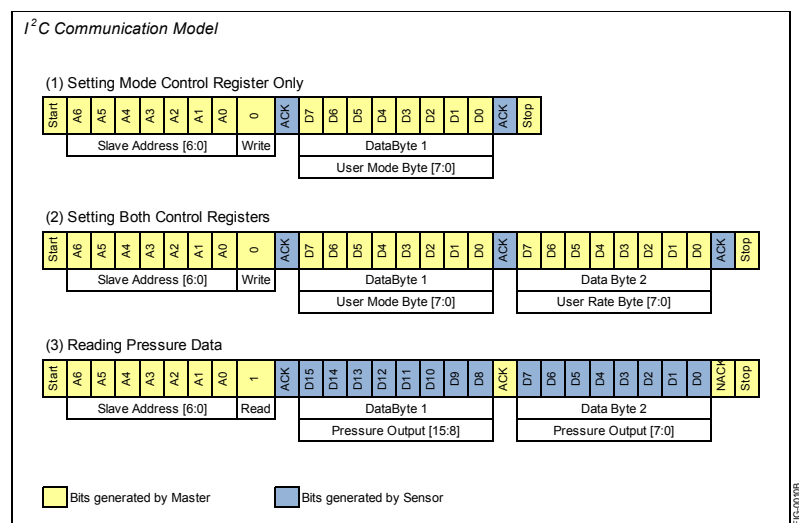
The I²C address is set to 0x28 by grounding the SCK line. Other I²C addresses can be established by applying a voltage to the SCK line by use of a resistor divider across the sensor supply voltage. The suggested resistor values and the respective I²C address are shown in the table to the left.

Note: R1 is the lower resistor of the divider where R2 is the upper resistor of the divider.

10.4.2 I2C Communications Model

The sensor is configured as a slave device and as such, the communicating host must be configured as a master. There are two types of possible data transfers, data transfers from the master transmitter to an addressed sensor (WRITE), and data transfers from an addressed sensor to a master receiver (READ). The master device initiates both types of data transfers and provides the serial clock pulses on SCL.

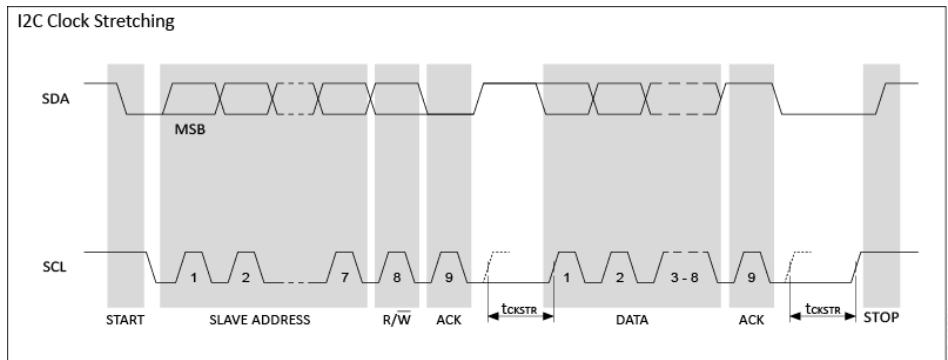
The communications model for I²C is similar to that of SPI however, since I²C is a half-duplex protocol, the transfer of information to and from the sensor is separated into two separate communications. This is in contrast to the SPI interface where the transmitted and received data occurs simultaneously to and from the host. Refer to the figure to the right for the data communication model for the ND Series sensors.



Industrial Middle Pressure Sensors

10.4.3 I²C Clock Stretching

The figure to the right illustrates the I²C clock stretching by the sensor. At times, the sensor requires additional time to respond to the host and utilizes the clock stretching feature of the I²C protocol. This is accomplished by holding the SCL low after the ACK cycle of a data transfer. Refer to Section 7.4 for the clock stretching timing. Note, the maximum clock stretch time will generally only occur once during the three ACK cycles of a two byte transfer. That is, the balance of ACK's during a multi-byte transfer will generally include the typical clock stretching time.



10.4.4 I²C Bus Compatibility

The I²C specification allows any recessive voltage between 3.0 and 5.0 V. Different devices on the bus may operate at different voltage levels. However, the maximum voltage on any port pin must conform to the electrical characteristics specifications (See section 1). The bi-directional SCL (serial clock) and SDA (serial data) lines must be connected to a positive power supply voltage through a pull-up resistor or similar circuit. Every device connected to the bus must have an open-drain or open-collector output for both the SCL and SDA lines, so that both are pulled high (recessive state) when the bus is free.

10.5 Extended Data Acquisition

10.5.1 Available Extended Data

For either the SPI or I²C interface, additional data is available beyond the pressure. The means to access this extended data is to continue reading data (either SPI or I²C) beyond the first 16 bits of pressure information. The following table defines the order of the available data and respective format.

Data	Bytes	Format	Interpretation	Example
Pressure	1-2	2 byte, Signed Int	See Section 10.7	See Section 10.7
Temperature	3-4	2 byte, Signed Int	Fixed Decimal [8.8 bits], Upper 8 bits integer, lower 8 bits fractional. Temperature in °C	1880H (18.80H) = 24.5°C
Model	5-12	8 byte, ASCII, null terminated	Right reading ASCII with null termination	4EH,44H,30H,30H,35H,44H,00H,xxH = ND005D
Serial Number	13-16	4 byte, Hex	Unique 4 byte serial for each part	2FD627A4H
Build Number	17-22	6 byte, ASCII, null terminated	Right reading ASCII with null termination	30H,31H,34H,37H,41H,00H = 0147A

10.5.2 SPI Extended Data Read

Reading the extended data while using the SPI interface is the same as shown in Section 10.3 with exception that the master continues to read during the same nSS sequence to read all 22 bytes of the extended data. Any portion of the 22 bytes can be read during the transfer. That is, for example, 4 bytes could be read to acquire only the pressure and temperature information. When reading the extended data, only the first two bytes sent to the sensor (User Mode and User Rate) are used to set the internal registers. The subsequent bytes (bytes 5 through 22) are ignored. Data read following the first 22 bytes is undefined.

10.5.3 I²C Extended Data Read

Reading the extended data via the I²C interface is similar to using the SPI interface where the master can simply continue to reading the sensor during the pressure reading transfer. The master continues Ack'ing until the number of desired bytes are read.

10.6 Control Registers

10.6.1 Mode Control Register

Default Value: 0xF3

Details of the Mode Control register are illustrated in the figure to the right.

Bits 0-2 control the output pressure range.

Bit 3 is the I/O Watchdog Enable bit. When set, the I/O watchdog is enabled. When enabled, the I/O watchdog will monitor the I/O activity. If I/O activity is not detected for the I/O Watchdog timeout time, the pressure sensor will reset itself. The I/O watchdog timeout time is determined by the currently active bandwidth setting.

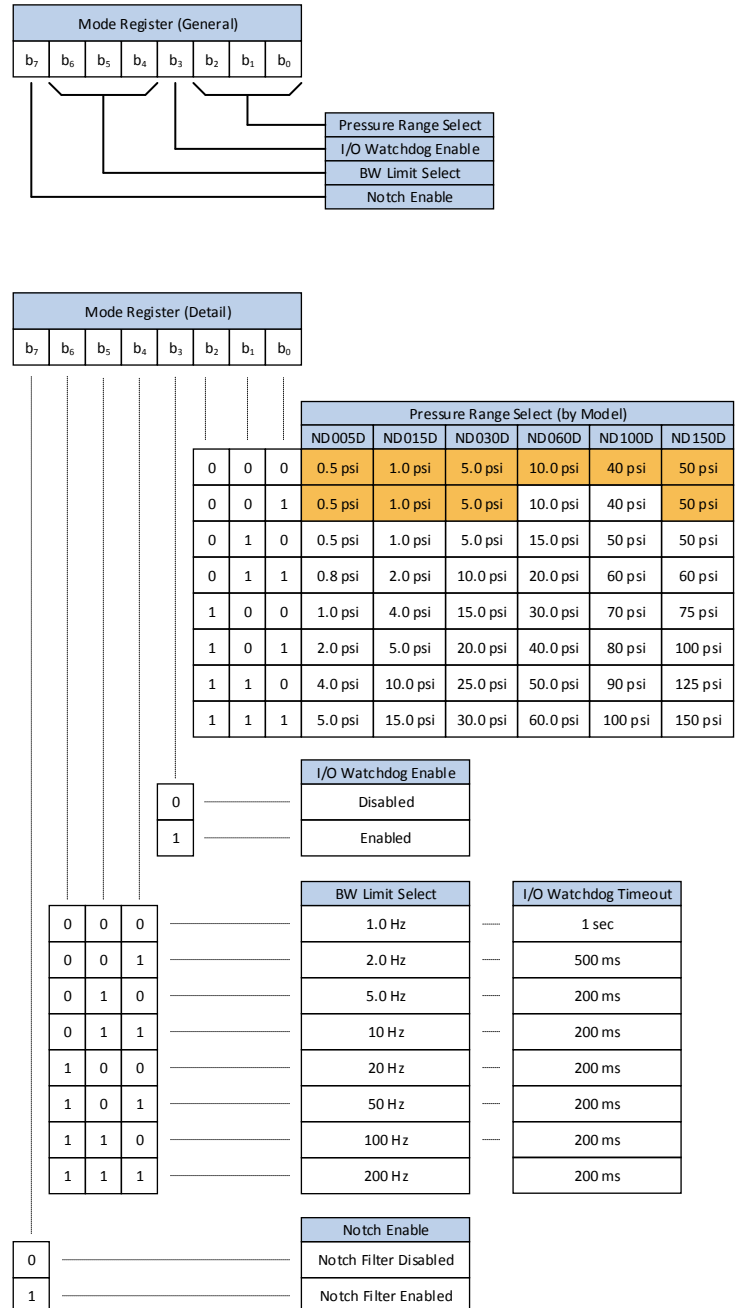
Bits 4-6 control the BW Limit Filter.

Bit 7 is the Notch Filter Enable bit. When enabled, the 50/60Hz notch filter is active.

Please note the available pressure ranges for the different sensor models are indicated in the table. For values where the pressure range is not available for the given sensor (high or low), the table is highlighted in light orange and indicates the given full scale value to use for pressure conversion. It is possible to use these values.

It should also be noted that upon changing the Mode Control value, there is a one cycle latency before the new Mode Control value becomes valid. That is, the data of the communication cycle following a change to the Mode Control register will not reflect the change. It is not until the second communication cycle that the change in the Mode Control register will be reflected in the output data.

Mode Control Register Detail



10.6.2 Rate Control Register

Default Value: 0x1C

The Rate Control Register controls the rate at which the DAV pin is asserted indicating new data is available. This register is primarily used to throttle down the actual data transfer rate (when using the DAV as the trigger to sample) since the general industrial requirement is less than the internal 444 Hz update rate.

The function of this register is that it is the reload value of a data rate counter. The value of the Rate Control Register is the divisor of the 444 Hz internal data rate. Since a divisor of zero is not possible, a zero value will select the auto-select rate mode. In this mode, the rate is selected based on the selected bandwidth limit. The auto rate value is roughly 3x the corner frequency of the selected bandwidth limit in all auto selected rates (where possible).

Note: Start-up time for the sensor is approximately 80ms for the first sample to be settled. Requesting data during this time will result in invalid information. However, this start-up time can be used for configuring the Mode and Rate registers by performing a transfer with the desired Mode and Rate register values and discarding the received pressure data. After waiting the required start-up time, the sensor will respond with desired data since the Mode and Rate registers have been pre-established.

Rate Control Register Detail

Rate Control Register								
b ₇	b ₆	b ₅	b ₄	b ₃	b ₂	b ₁	b ₀	
0	0	0	0	0	0	0	0	Auto Select
0	0	0	0	0	0	0	1	444 Hz
0	0	0	0	0	0	1	0	222 Hz
0	0	0	0	0	0	1	1	148 Hz
1	1	1	1	1	1	1	0	1.75 Hz
1	1	1	1	1	1	1	1	1.74 Hz

Selected BW Limit	Auto Select Rate
1.0 Hz	3.0 Hz
2.0 Hz	6.0 Hz
5.0 Hz	15.3 Hz
10 Hz	31.7 Hz
20 Hz	63.4 Hz
50 Hz	148 Hz
100 Hz	444 Hz
200 Hz	444 Hz

FIG-0084A

10.7 Computing Pressure

The pressure data is in the form of 16 bit signed integer sent in high byte then low byte order. This is a differential output by definition and the data range is $\pm 2^{15}$. There is a 10% margin in the output scaling and the selected full scale will reside in the 90% band of the total available output data range. Refer to Equation 1 (below) for the general model for computing the output pressure. As an example, if the sensor output is 3,647 counts and the selected pressure range is 1.0 inH₂O, then the output pressure is 0.124 inH₂O. Conversely, for a -3,647 count with the selected pressure range of 1.0 inH₂O, the computed output pressure is -0.124 inH₂O. Refer to Example 1 (below) for the specific example computation.

$$Eq\ 1: P_{inH_2O} = \frac{Out_{DIGITAL}}{90\% * 2^{15}} * Range_{SELECTED}$$

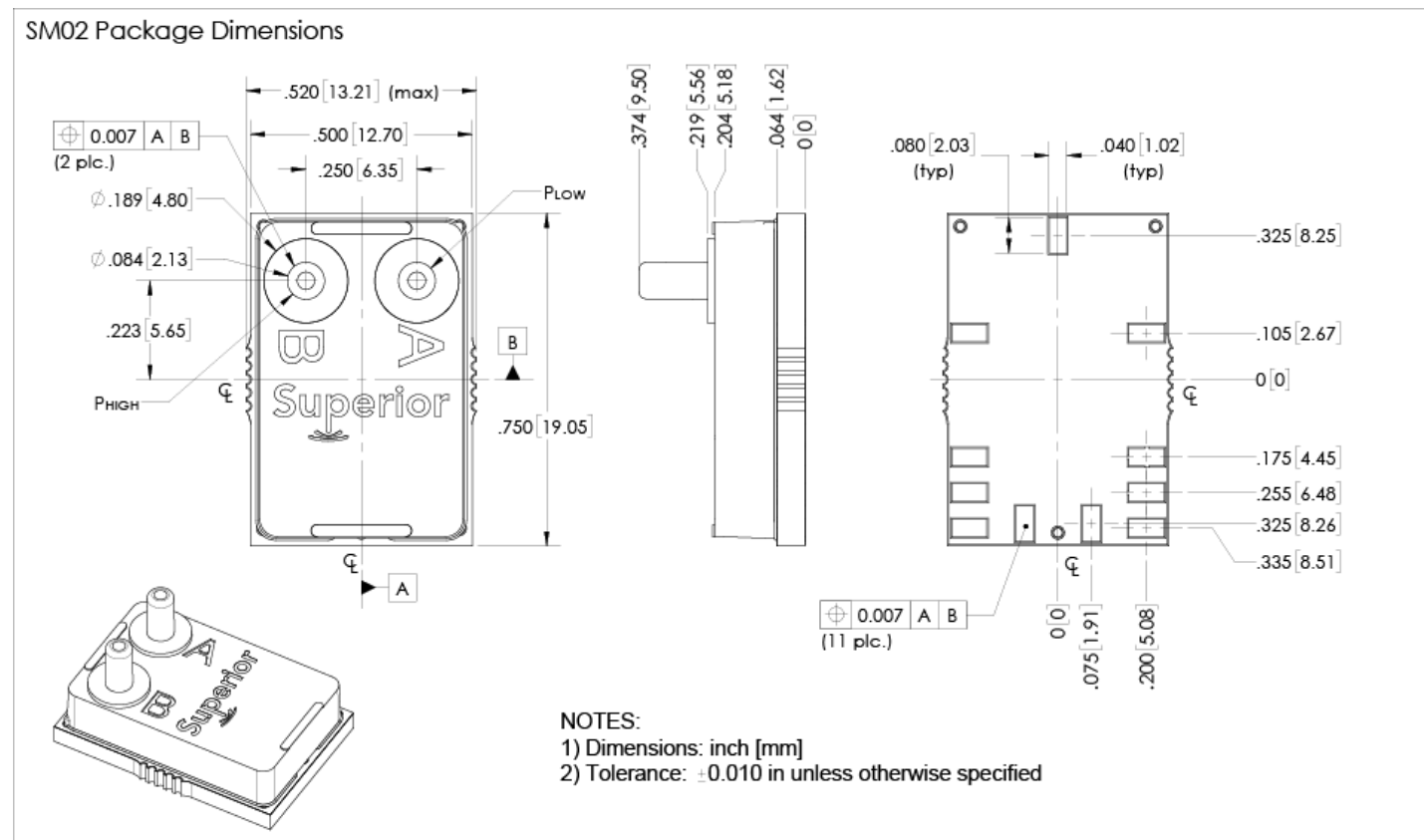
$$Example\ 1: P_{inH_2O} = \frac{3,647}{90\% * 2^{15}} * 1\ inH_2O = 0.124\ inH_2O$$

ND Series

Industrial Middle Pressure Sensors

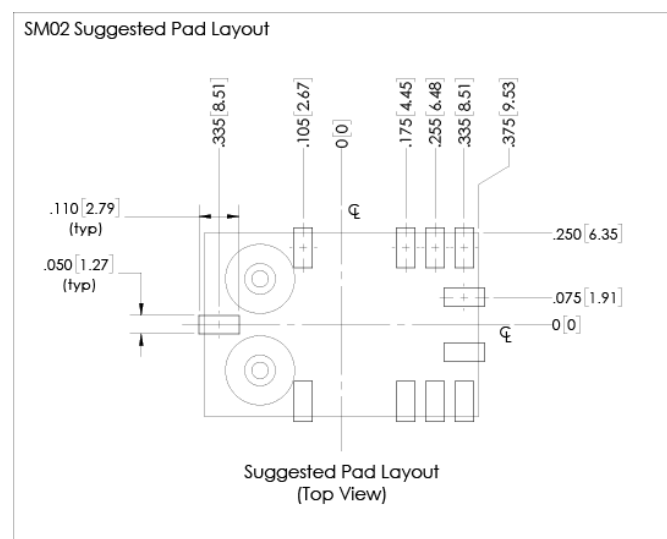
11 Mechanical

11.1 Package Dimensions



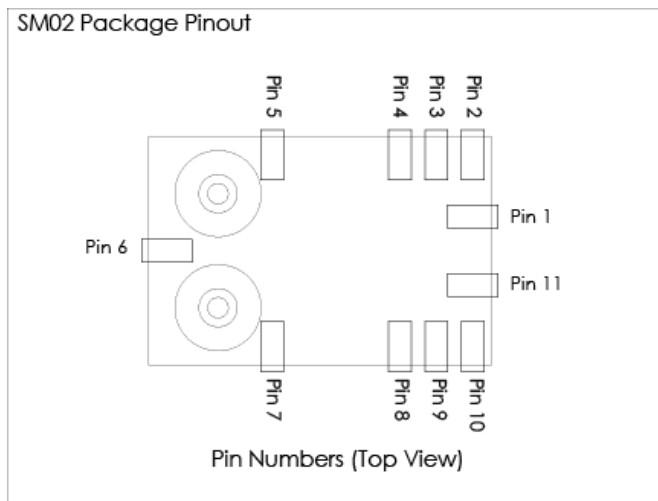
11.2 Suggested Pad Layout

The suggested pad layout is shown in the figure below. An Eagle PCB symbol library is available with the shown pad dimensions. Please consult the factory to obtain the library.



11.3 Pinout

Pin	Sym	SPI	I ² C
1	nSS	Slave Select (active low)	Tie to Ground
2	MOSI/SCL	MOSI	SCL
3	MISO/SDA	MISO	SDA
4	SCK	Serial Clock	See Section 10.4.1
5	DNC	Do Not Connect	
6	DNC	Do Not Connect	
7	DNC	Do Not Connect	
8	Gnd	Ground	
9	V _{DD}	Sensor Supply	
10	nRST	Reset (active low)	
11	DAV	Data Available	



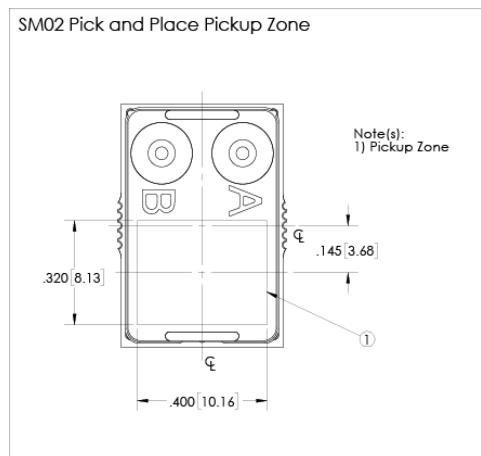
12 Manufacturing

For additional pressure sensor handling and assembly instructions, please see application note [AN-0010](#).

12.1 Reflow Soldering and Handling Conditions

Parameter	Sym	Val	Units
Soldering Specifications (Max)			
Preheat Ramp Rate	t _{PHRR}	3	°C/s
Soak Time	t _{SOAK}	3	min
Time Above 217C	t _{GT217}	50	s
Time Above 230C	t _{GT230}	40	s
Time Above 250C	t _{GT250}	15	s
Peak Temperature	t _{PT}	255	°C
Cooling Ramp Rate	t _{CRR}	-4	°C/s
Weight	W _{PRT}	3.5	gm
Moisture Sensitivity	MSL	3	
ESD (Human Body Model)	ESD	2	kV

12.2 Pick and Place Pick-up Zone

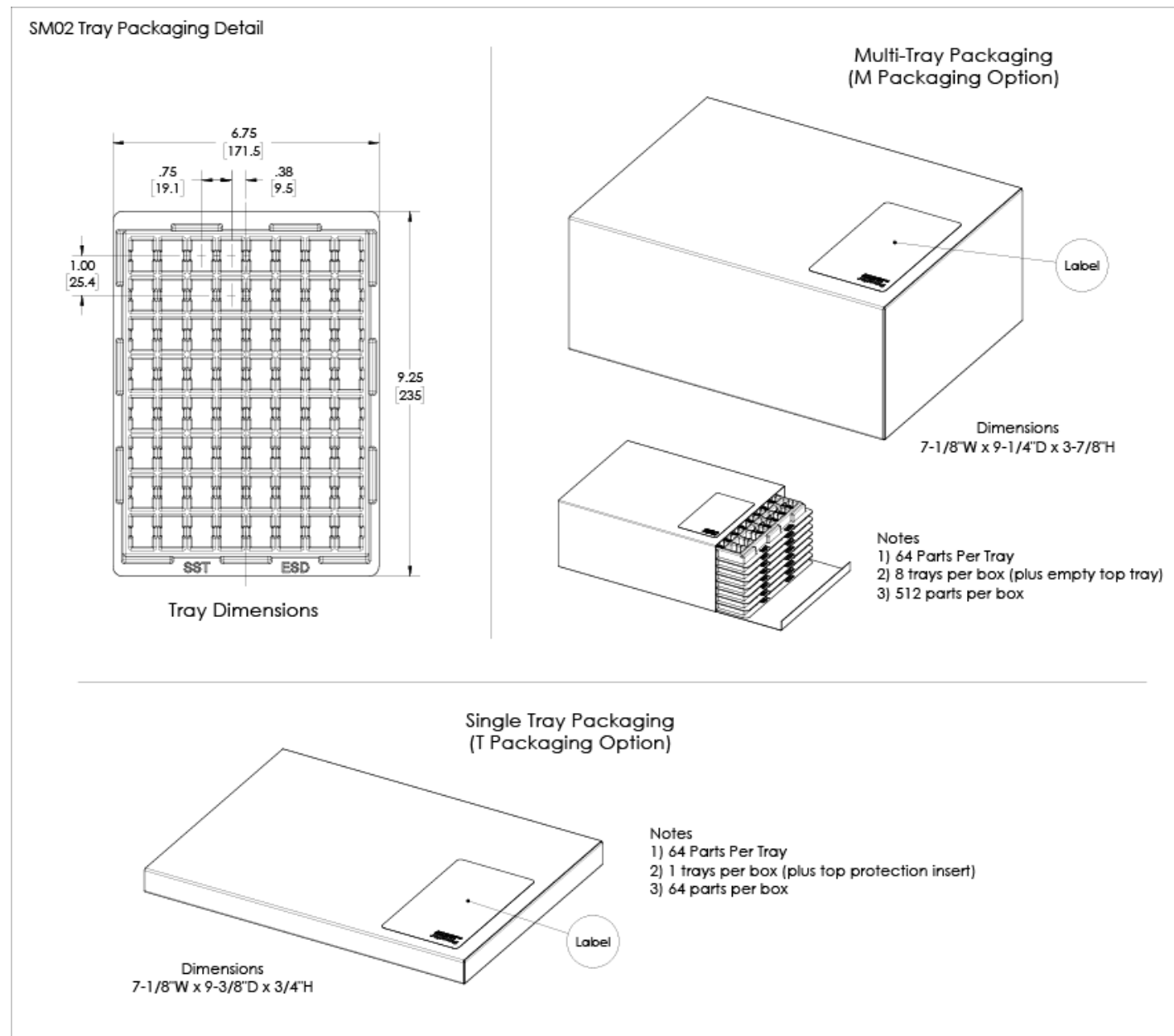


ND Series

Industrial Middle Pressure Sensors

13 Packaging and Labeling

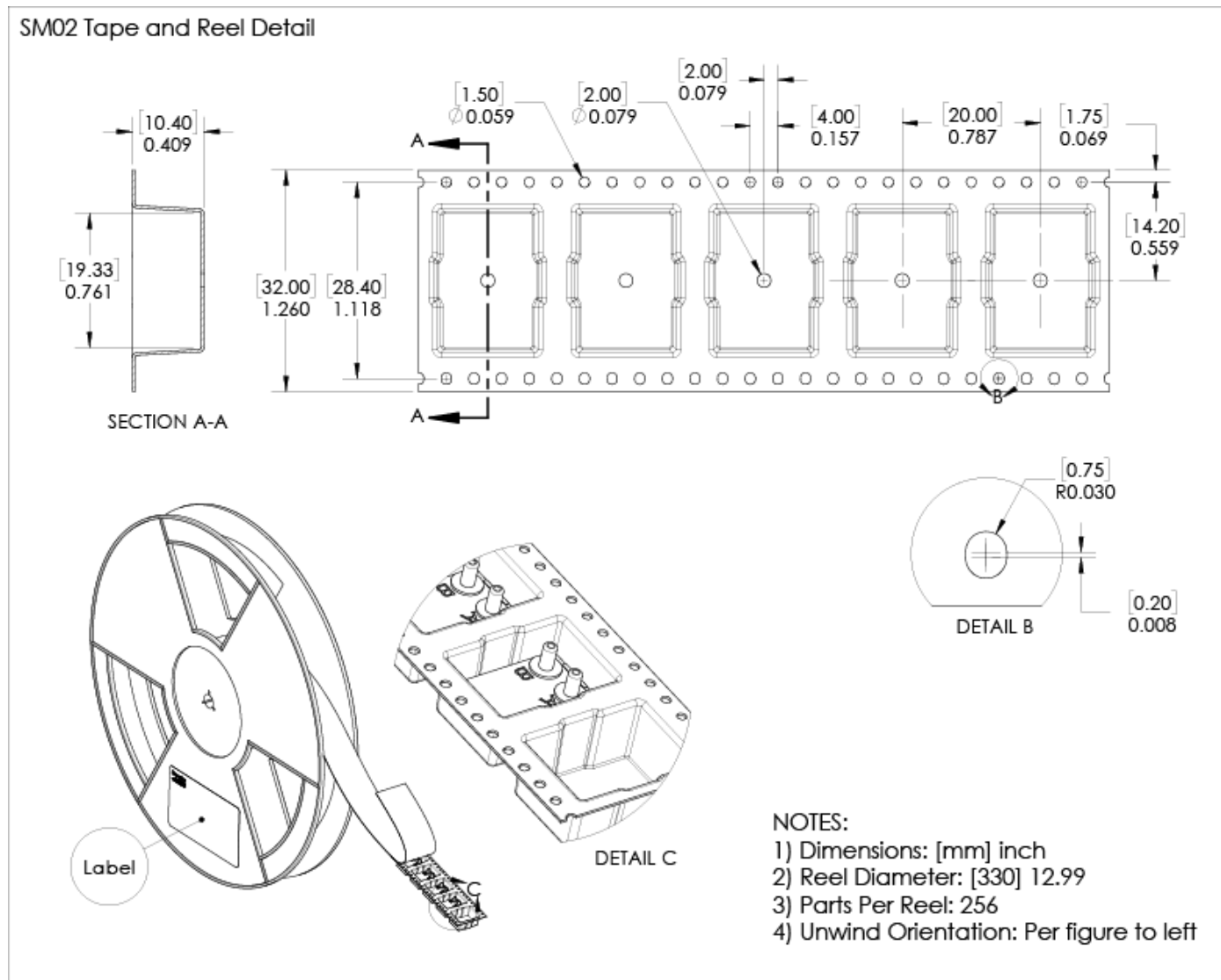
13.1 Tray Packaging



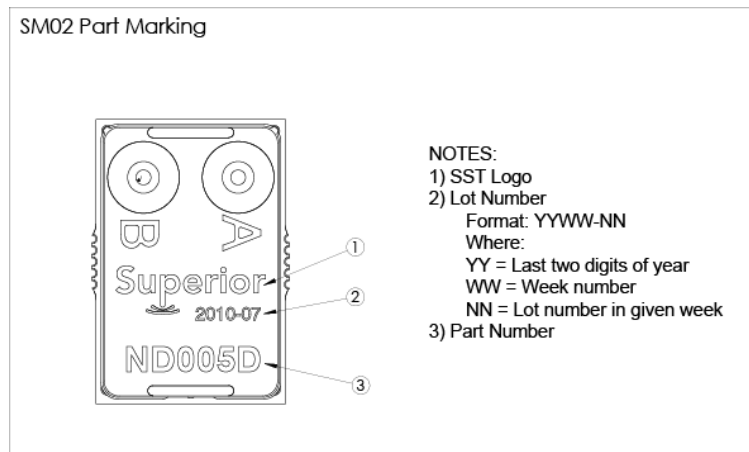
ND Series

Industrial Middle Pressure Sensors

13.2 Tape and Reel



13.3 Part Identification



13.4 Packaging Labels

Packaging labels are provided with barcode Code 128 symbology. The provided fields are Company Name, Part Number, Packaging ID and Quantity. The Packaging ID traces back to the Lot Number (or Lot Numbers) contained in the package. The purpose is to eliminate multiple labels (one for each included Lot Number) in the event of multiple Lot Numbers within a single package. This is for ease of customer tracking and maintenance. The Packaging ID is a 24-bit value printed in hexadecimal format.



14 Ordering Information

Part Number	Part Package	Packaging	Packaging Qty	Order Number
ND005D-SM02	SM02	Tape and Reel	256	ND005D-SM02-R
		Multi-Tray	512	ND005D-SM02-M
		Single Tray	64	ND005D-SM02-T
		Quarter Reel	64	ND005D-SM02-Q
		Cut Tape	1-63	ND005D-SM02-C
ND015D-SM02	SM02	Tape and Reel	256	ND015D-SM02-R
		Multi-Tray	512	ND015D-SM02-M
		Single Tray	64	ND015D-SM02-T
		Quarter Reel	64	ND015D-SM02-Q
		Cut Tape	1-63	ND015D-SM02-C
ND030D-SM02	SM02	Tape and Reel	256	ND030D-SM02-R
		Multi-Tray	512	ND030D-SM02-M
		Single Tray	64	ND030D-SM02-T
		Quarter Reel	64	ND030D-SM02-Q
		Cut Tape	1-63	ND030D-SM02-C
ND060D-SM02	SM02	Tape and Reel	256	ND060D-SM02-R
		Multi-Tray	512	ND060D-SM02-M
		Single Tray	64	ND060D-SM02-T
		Quarter Reel	64	ND060D-SM02-Q
		Cut Tape	1-63	ND060D-SM02-C
ND100D-SM02	SM02	Tape and Reel	256	ND100D-SM02-R
		Multi-Tray	512	ND100D-SM02-M
		Single Tray	64	ND100D-SM02-T
		Quarter Reel	64	ND100D-SM02-Q
		Cut Tape	1-63	ND100D-SM02-C
ND150D-SM02	SM02	Tape and Reel	256	ND150D-SM02-R
		Multi-Tray	512	ND150D-SM02-M
		Single Tray	64	ND150D-SM02-T
		Quarter Reel	64	ND150D-SM02-Q
		Cut Tape	1-63	ND150D-SM02-C

15 Revisions

Rev	Change Description(s)	Date	By
A	Initial Release	12/16/21	T.S.
B	1) Updated product image and product summary 2) Expanded definitions (with examples) of performance characteristics measurements in section 6 3) Updated mechanical, manufacturing and packaging sections	8/7/24	A.G.

16 Warranty

Superior Sensor Technology and its subsidiaries warrant goods of its manufacture as being free of defective materials and faulty workmanship during the applicable warranty period. In all cases, Superior Sensor Technology's standard product warranty applies; please refer to your order acknowledgement or consult your local sales office for specific warranty details.

If warranted goods are returned to Superior Sensor Technology during the period of coverage, Superior Sensor Technology will repair or replace, at its option, without charge those items that Superior Sensor Technology, in its sole discretion, finds defective. **The foregoing is buyer's sole remedy and is in lieu of all other warranties, expressed or implied. In no event shall Superior Sensor Technology be liable for consequential, special, or indirect damages.**

While Superior Sensor Technology may provide application assistance personally, through literature or the Superior Sensor Technology web site, it is buyer's sole responsibility to determine the suitability of the product in their application. Superior Sensor Technology assumes no liability for applications assistance or customer product design.

Superior Sensor Technology reserves the right to make corrections, modifications, enhancements, improvements and other changes to its products and services at any time and to discontinue any product or service without notice. Customers should obtain the latest relevant information before placing orders and should verify that such information is current and complete.

Superior SENSOR TECHNOLOGY

103 Cooper Court
Los Gatos, CA 95032

www.SuperiorSensors.com
info@SuperiorSensors.com
+1.408.703.2950

NimbleSense is a trademark of Superior Sensor Technology