Two vertical bars on the left side of the page: a yellow one on top and a green one below it.

SL-MIPI-CSI-OV5640 Datasheet and Pinout

Rev. 20260422174149

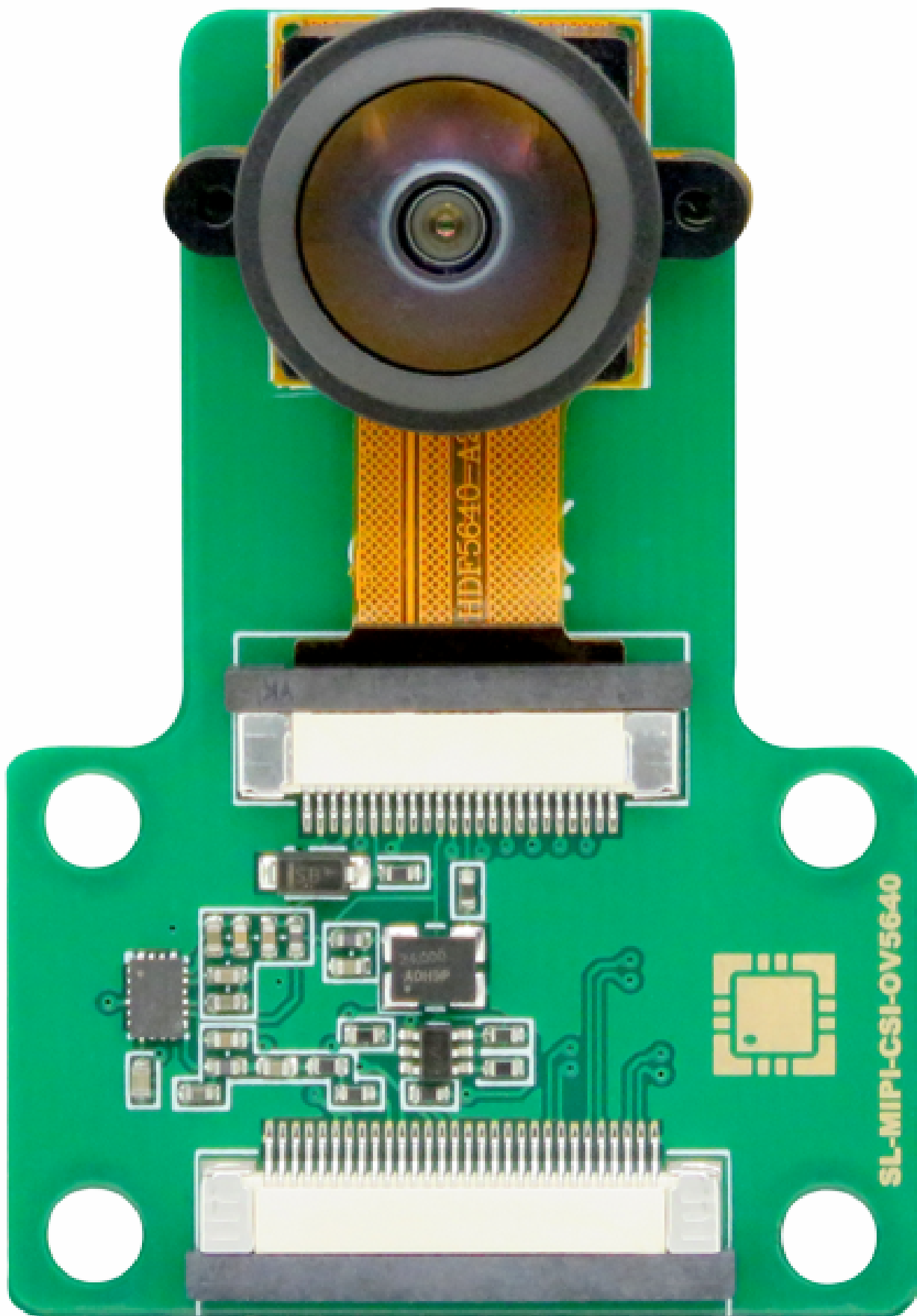
Source URL: https://wiki.somlabs.com/index.php?title=SL-MIPI-CSI-OV5640_Datasheet_and_Pinout

Table of contents

General description	1
Features	4
Pictures	6
Ordering info	11
Operating ranges	12
Electrical parameters	13
MIPI-CSI (output) Pinout	14
Dimensions	16

SL-MIPI-CSI-OV5640 5Mpx camera module with MIPI-CSI interface and OV5640 video sensor Datasheet and Pinout

General description



SL-MIPI-CSI-OV5640 is the 5 Mpx color camera module. Module is equipped with MIPI-CSI interface and FPC30 connector therefore SL-MIPI-CSI-OV5640 module is matched to the SoMLabs carrier boards.

The SL-MIPI-CSI-OV5640 is equipped with OV5640 hi-res HD 5 Mpx CMOS video sensor. Video interface is dual lane MIPI-CSI interface and module supports electronic shutter mode: rolling shutter/frame exposure.

As a result of using advanced PMIC - SL1 - developed by SoMLabs, the SL-MIPI-CSI-OV5640 module is powered from single +3.3V line available in FPC connector.

The SL-MIPI-CSI-OV5640 is fully compatible with SoMLabs carrier boards equipped with MIPI-CSI connectors. By default SL-MIPI-CSI-OV5640 module is equipped with fish-eye (120°) lens.

Features

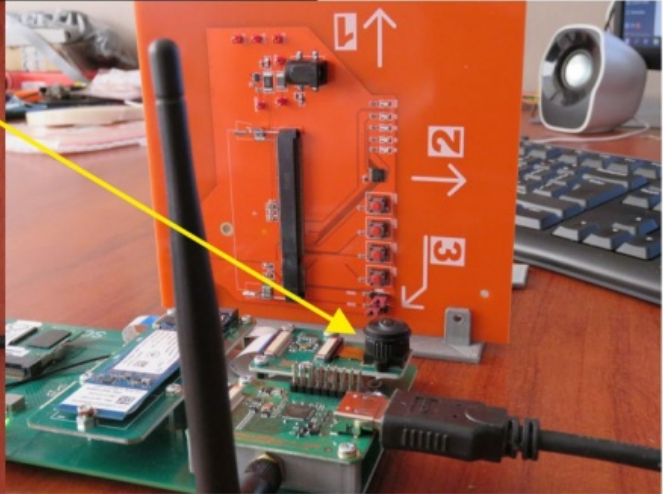
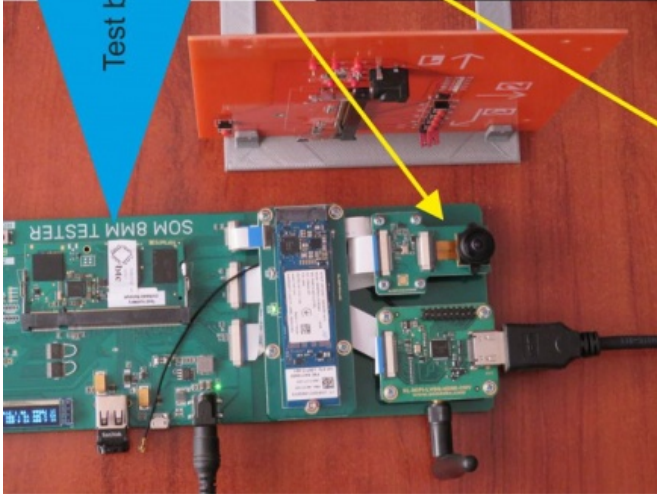
- Based on OV5640 CMOS video chip
- Resolution 2592 x 1944 px
- Fish-eye lens (120°)
- Output formats: 8/10-b RGB RAW
- MIPI-CSI interface (2 lanes)
- Typical frame rates:
- QSXGA (2592×1944): 15 fps
 - 1080p: 30 fps
 - 1280×960: 45 fps
 - 720p: 60 fps
 - VGA (640×480): 90 fps
 - QVGA (320×240): 120 fps
- Shutter: rolling/frame exposure
- Single rail +3.3V power supply
- Configuration via I2C
- Operating temperature -30÷+70°C
- Fully compatible with SoMLabs carrier boards equipped with MIPI-CSI interface (FPC30 connector)
- Built-in clock source
- Built-in SL1 PMIC (developed by SoMLabs)
- Connection with carrier board using FPC30 cable

Note: fish-eye camera lens distorts the picture perspective. Example below.

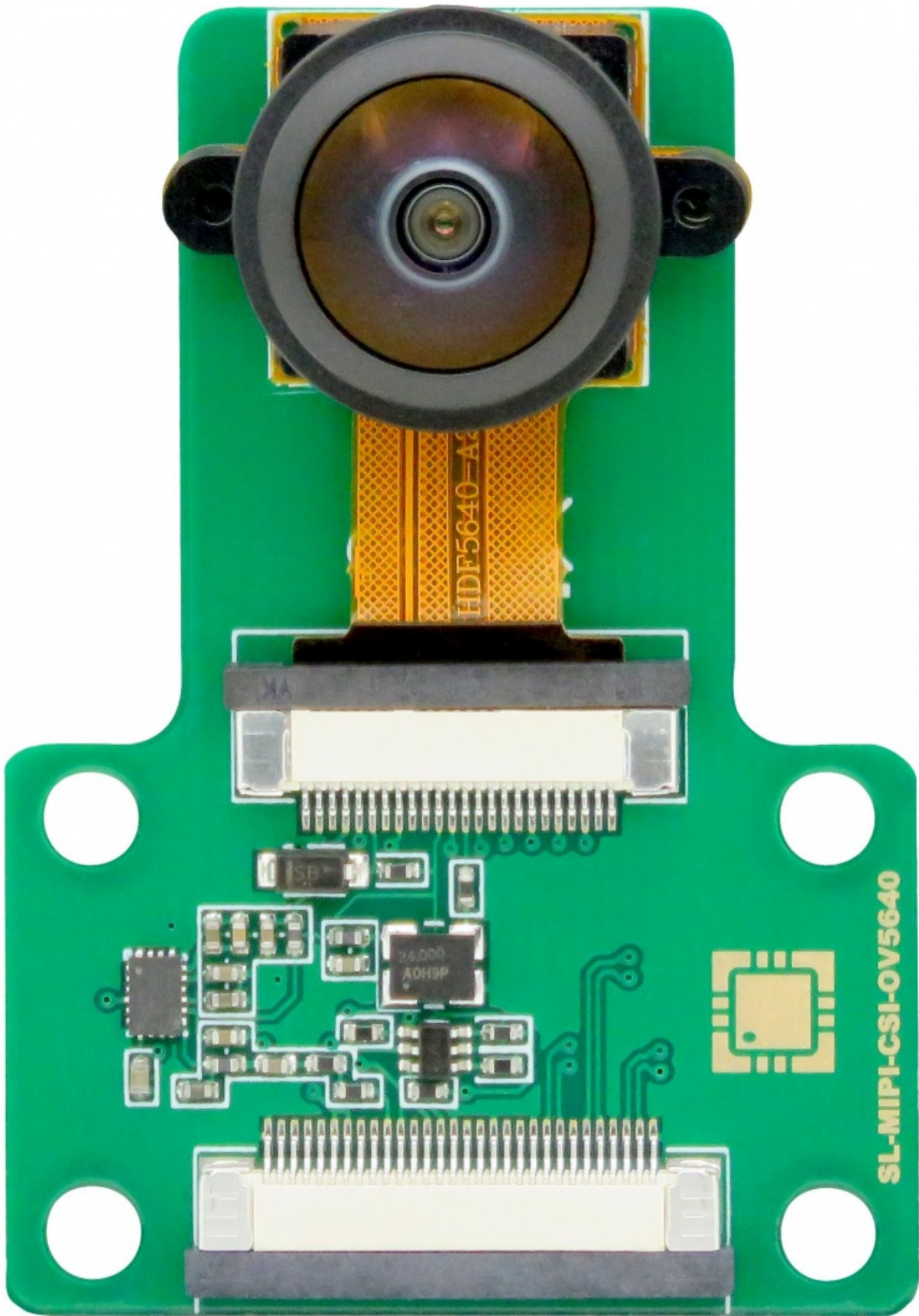
Roof in the room

Test board with camera

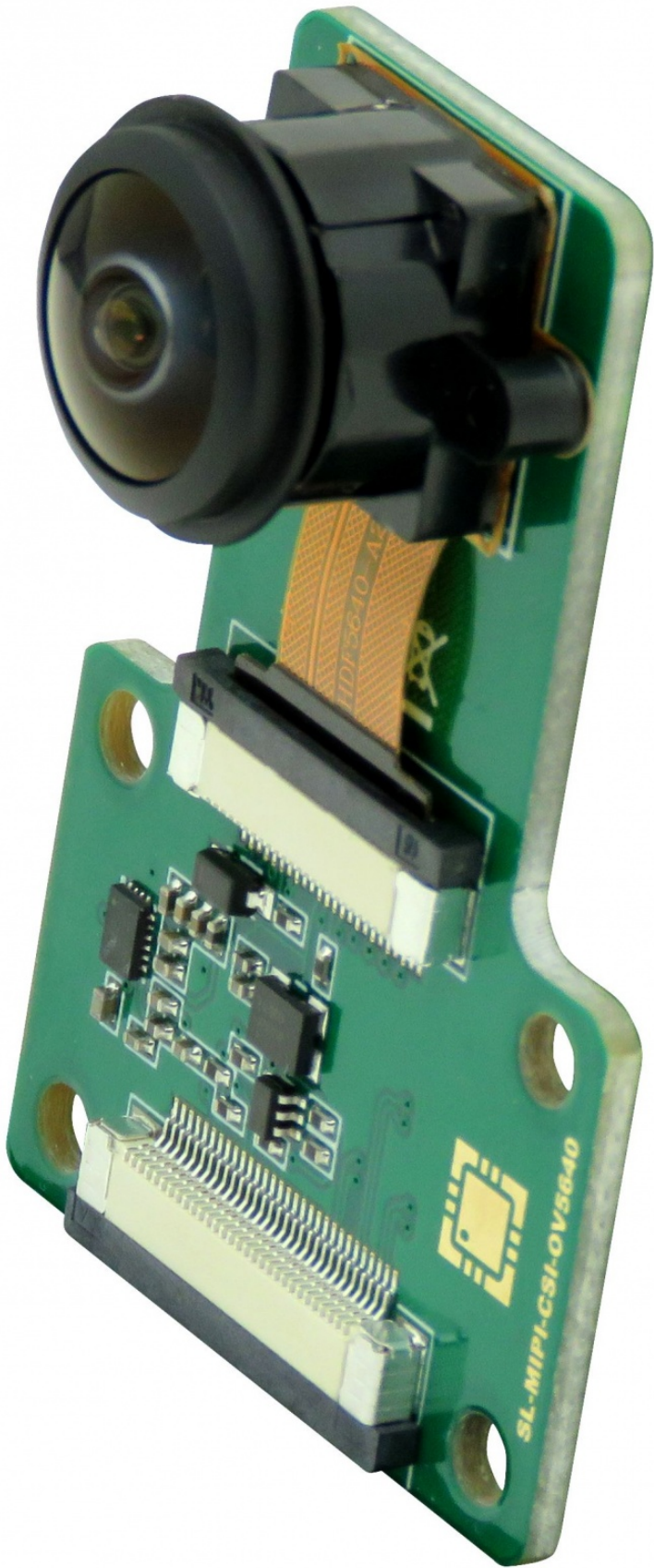
Fish-eye 120° camera lens view

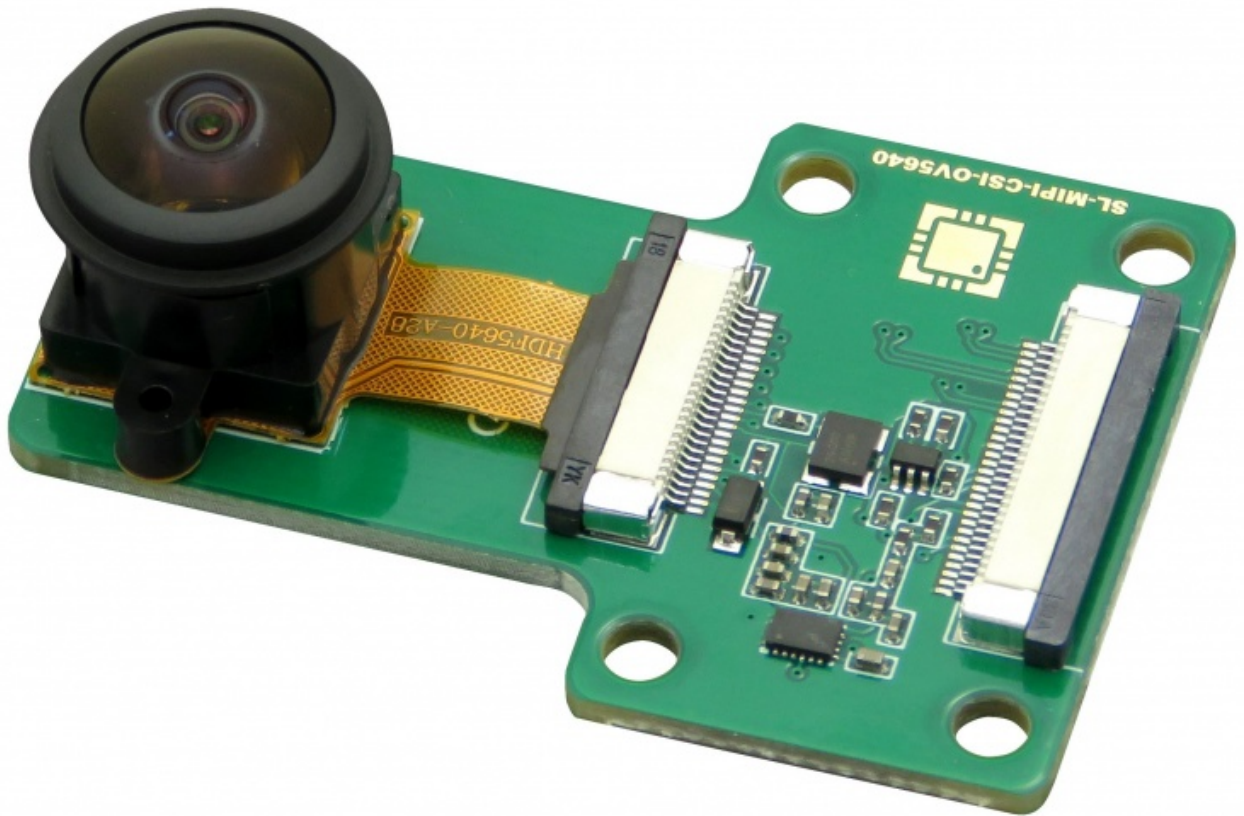


Pictures









Ordering info

SL-MIPI-CSI-OV5640 - FPC 30-pin flat cable (A-A) is included.

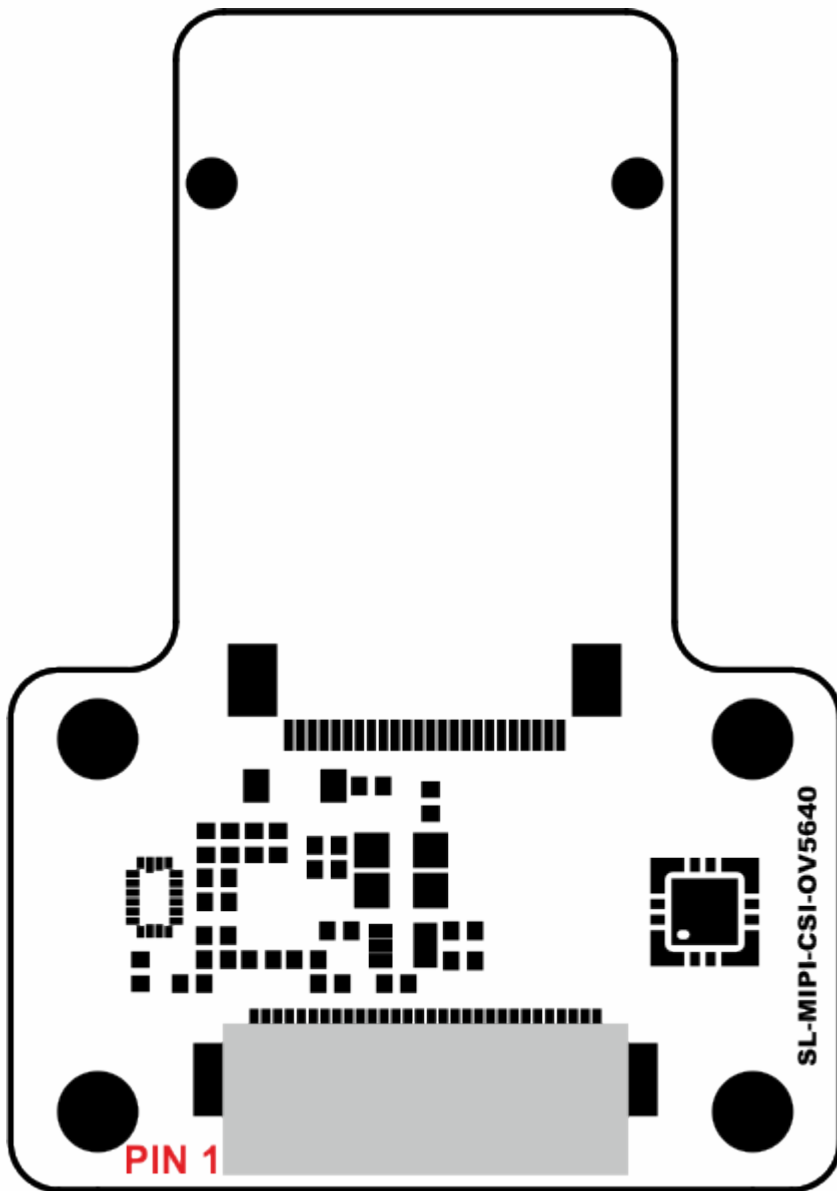
Operating ranges

Parameter	Value	Unit	Comment
Power Supply	3.3	V	Powered from carrier board
Current	0.16	A	Maximum peak value
Working temperature	-30...+70	°C	-

Electrical parameters

Signal name	Parameter	Value			Units
		Min.	Typ.	Max.	
+3.3V	Supply Voltage	3.2	3.3	3.35	V
$I_{3.3V}$	Supply Current (3.3V)	0.11	.16	-	mA
t_{PWRSEQ}	PMIC power-up time	-	150	-	ms
VIO	I2C, RES, PWDN Input Voltage	0	3.3	3.5	V
f_{I2C}	I2C Controller Speed	-	-	400	kHz
R_{I2C}	I2C IOs Pull-up Resistance	-	10	-	k Ω
R_{PWDN}	Serial resistors voltage divider connected between FPC30 pin and PWDN input of OV5640 sensor	-	2x10	-	k Ω

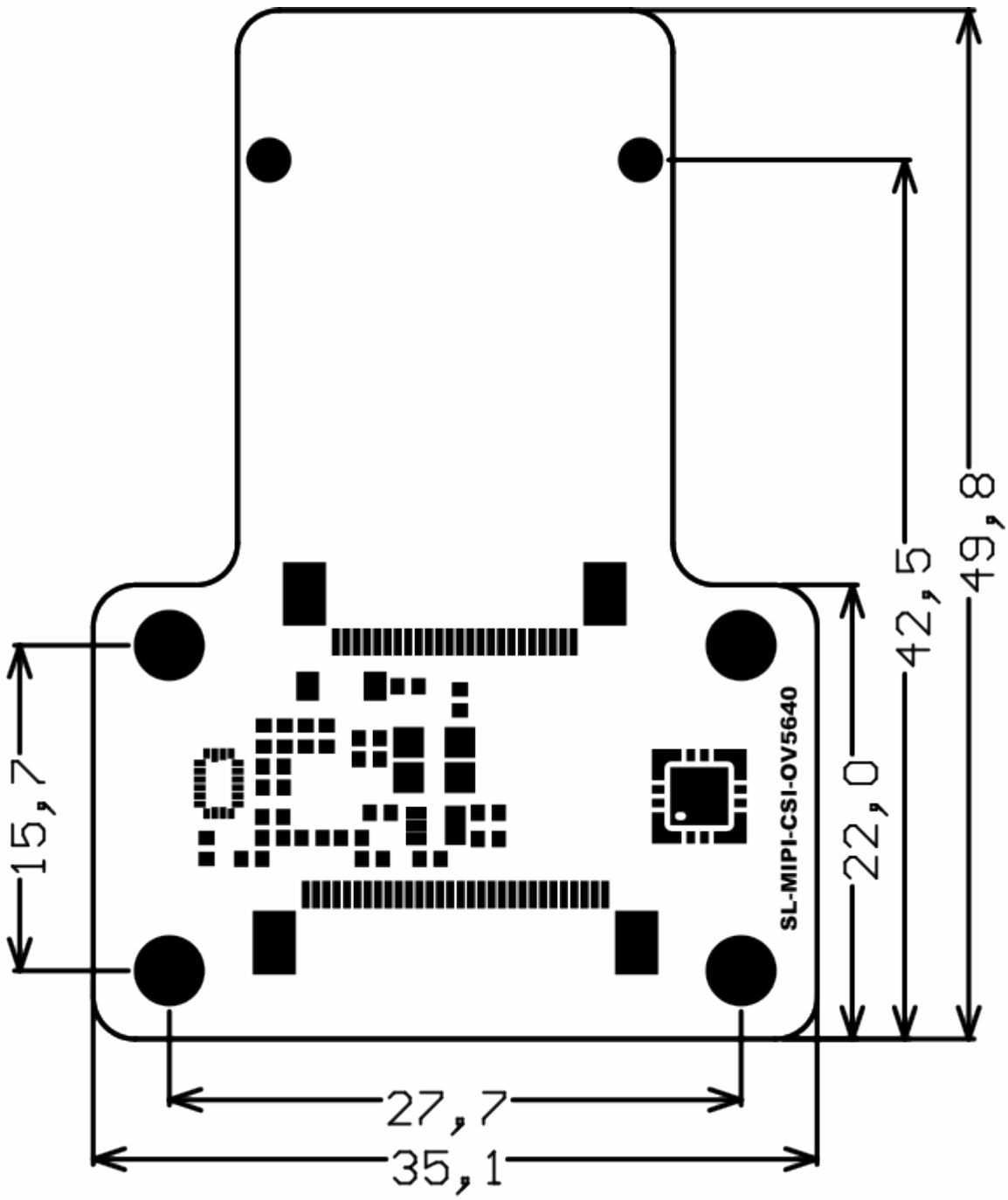
MIPI-CSI (output) Pinout



FPC30 connector pin	Function name	Description
1	GND	-
2	-	-
3	-	-
4	-	-
5	-	-
6	+3.3V	Power supply
7	+3.3V	Power supply
8	GND	-
9	-	-

10	PWDN	OV5640 - Power Down input (active high, internal pull-down)
11	RESET	OV5640 - Reset input (active low, internal pull-up)
12	GND	-
13	SIO_D	SDA line of configuration I2C interface (internal pull-up)
14	SIOD_C	SCL line of configuration I2C interface (internal pull-up)
15	GND	-
16	-	-
17	-	-
18	GND	-
19	-	-
20	-	-
21	GND	-
22	MDN1	CSI_DATA1_n
23	MDP1	CSI_DATA1_p
24	GND	-
25	MDN0	CSI_DATA0_n
26	MDP0	CSI_DATA0_p
27	GND	-
28	MCN	CSI_CLK_n
29	MCP	CSI_CLK_p
30	GND	-

Dimensions





SoMLabs

Lwowska 5
05-120 Legionowo
Poland
Tel. +48 22 767 36 20
Email: contact@somlabs.com
<http://somlabs.com>

Disclaimer: The information in this document is provided in connection with SoMLabs products. No license, express or implied, to any intellectual property right is granted by this document or in connection with the sale of SoMLabs products. SoMLabs makes no representations or warranties with respect to the accuracy or completeness of the contents of this document and reserves the right to make changes to specifications and products descriptions at any time without notice. SoMLabs does not make any commitment to update the information contained herein.