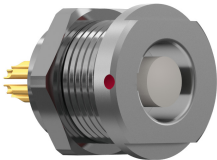




receptacle\_with\_break\_away\_and\_push\_pull\_locking\_for\_front\_panel\_mounting

size: 0, IP68, keying: 0, number\_of\_contacts: 4, solder\_cup, contact\_type: sockets, Ethernet/IP® (100 Mbit/s)



Basic information

Part number	GE0B0C-P04LFG0-0000
Category	connector
Type of connector	receptacle
Assembly situation	front_panel_mounting
Size	5feceb

Contact insert description

Special features	data_transmission
Transmission type	Ethernet/IP® (100 Mbit/s)
Number of contacts	4
Contact type	sockets
Contact diameter	ec72e6
Termination type	solder_cup
Termination diameter	08561d
Wire cross section AWG	374cb3

Technical information

Max. current single contact	4232cc	IEC 60512-5-2:2002 (DIN EN 60512-5-2:2003)
Max. current insert	7.5	VDE 0298-4:2003
Test voltage	0.9 kV AC	SAE AS 13441:1998 method 3001.1
Max. creepage distance (contact to contact)	0.6 mm (Contact to housing)	
Max. creepage distance (contact to housing)	0.8 mm (Contact to housing)	
Max. clearance distance (contact to contact)	0.6 mm (Contact to contact)	
Max. clearance distance (contact to housing)	0.8 mm (Contact to housing)	

**Mechanical and environmental data**

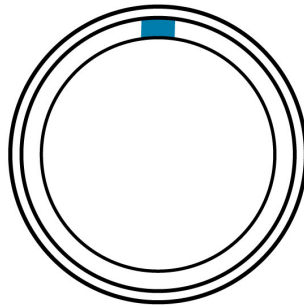
Locking principle	break_away , push_pull
Mating cycles	9e1839
IP class	IP68
Max. operating temperature	120 °C
Min. operating temperature	-40 °C
Tightening torque	2 Nm
Weight	12.85 g

ip\_protection\_class\_refers\_to\_mated\_condition

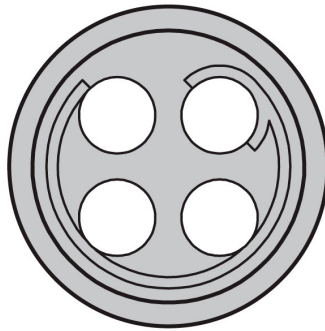
**Material and surface treatments**

Material	cu_alloy_with_matt_chrome_finish
Contact material	gold

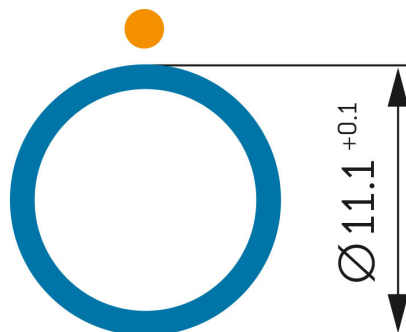
CODING: 0°



POSITIONS: 4 Positions



PANEL CUT OUT:



Further technical information and downloads

Connection diagram	connection_diagram_4_pin_ethernet_100Mbps_rj45
--------------------	--