

square flange receptacle with break away, push pull and screw lock for front and rear panel mounting

size: 9 [STD 38999], IP6K8 / IP6K9K, keying: a, number_of_contacts: 10, solder_cup, contact_type: sockets, Signal

**Basic information**

Part number	G4TAAT0-E010WN-LS00
Category	connector
Type of connector	receptacle
Assembly situation	flange_mounting
Size	9 [STD 38999]

Contact insert description

Transmission type	Signal
Number of contacts	10
Contact type	sockets
Contact diameter	0.76 mm
Termination type	solder_cup
Wire cross section AWG	AWG 22 – 26

Technical information

Max. current single contact	5 A	IEC 60512-5-2:2002 (DIN EN 60512-5-2:2003)
Test voltage	0.75 kV AC	EIA-364-20F:2019-02

Mechanical and environmental data

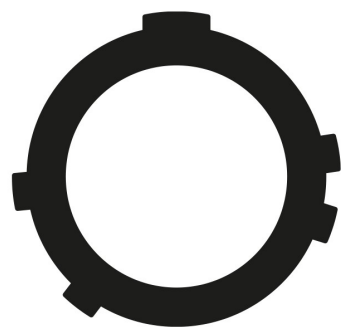
Locking principle	break_away , push_pull , screw_lock
Keying	a
Mating cycles	500
IP class	IP6K8 / IP6K9K
Max. operating temperature	175 °C
Min. operating temperature	-65 °C
Tightening torque	6 Nm
Weight	9.37 g

ip_protection_class_refers_to_mated_condition

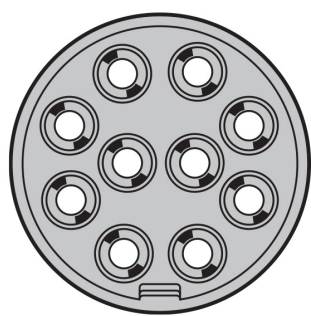
Material and surface treatments

Material	aluminum_with_tin_nickel_finish
Contact material	gold

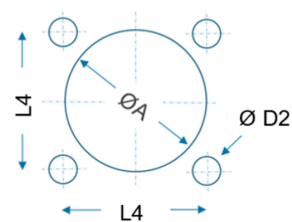
CODING:A



POSITIONS: 10 positions



Panel-Cut-out



Shell Size	Type	L4	Ø D2 [mm]	Ø A [mm]
9	Front panel	15.1	3.25	13.1
	Back panel			15.5
12	Front panel	20.6	3.25	19.1
	Back panel			21.2

Further technical information and downloads

[3D-File \(STP File\)](#)