

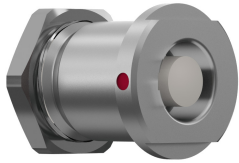
G23B0C-P26LFG0-0000

odu_mini_snap®_series_b



receptacle_with_break_away_and_push_pull_locking_for_front_panel_mounting

size: 3, IP68, keying: 0, number_of_contacts: 26, solder_cup, contact_type: sockets, Signal



Basic information

Part number	G23B0C-P26LFG0-0000
Category	connector
Type of connector	receptacle
Assembly situation	front_panel_mounting
Size	4e0740

Contact insert description

Transmission type	Signal
Number of contacts	26
Contact type	sockets
Contact diameter	ec72e6
Termination type	solder_cup
Termination diameter	08561d
Wire cross section AWG	374cb3

Technical information

Max. current single contact	4232cc	IEC 60512-5-2:2002 (DIN EN 60512-5-2:2003)
Test voltage	0.9 kV AC	SAE AS 13441:1998 method 3001.1
Max. creepage distance (contact to contact)	0.5 mm (Contact to housing)	
Max. creepage distance (contact to housing)	0.9 mm (Contact to housing)	
Max. clearance distance (contact to contact)	0.5 mm (Contact to contact)	
Max. clearance distance (contact to housing)	0.9 mm (Contact to housing)	

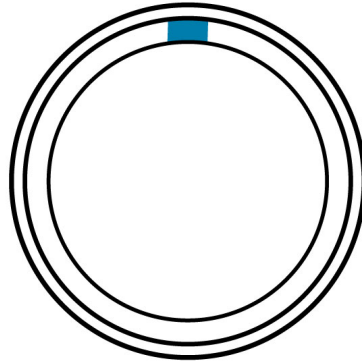
Mechanical and environmental data

Locking principle	break_away , push_pull
Mating cycles	9e1839
IP class	IP68
Max. operating temperature	120 °C
Min. operating temperature	-40 °C
Tightening torque	6.5 Nm
Weight	51.12 g

Material and surface treatments

Material	cu_alloy_with_matt_chrome_finish
Contact material	gold

CODING: 0°



PANEL CUT OUT:

