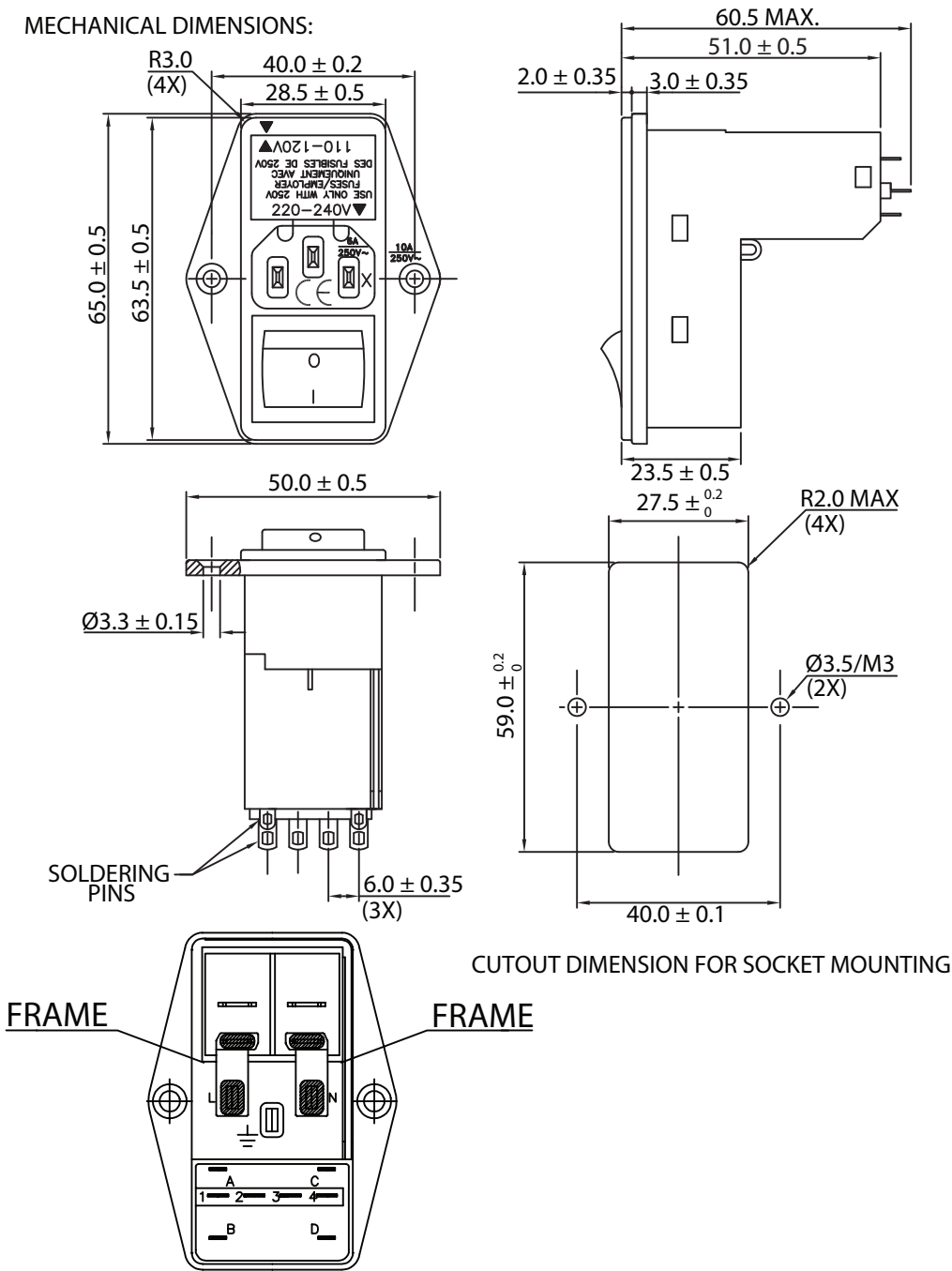


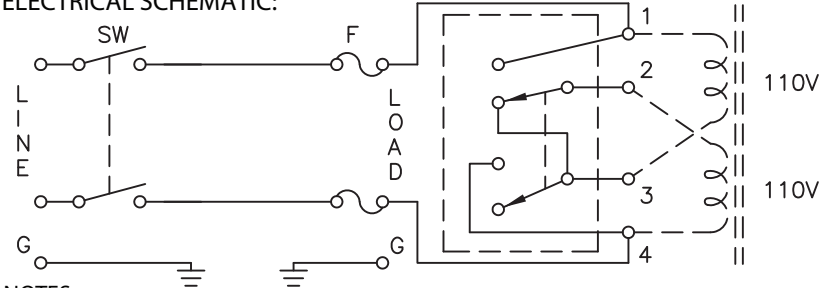
THESE DRAWINGS ARE THE PROPERTY OF QUALTEK ELECTRONICS AND NOT TO BE REPRODUCED FOR OR COMMUNICATED TO A THIRD PARTY WITHOUT THE EXPRESS WRITTEN PERMISSION OF AN OFFICER OF QUALTEK ELECTRONICS.

MECHANICAL DIMENSIONS:



REVISION			
REV.	DESCRIPTION	DATE	APPROVED
B	RoHS Compliancy	06-01-06	DP
C	Updated Specifications	01-24-08	DP
D	Fuse Changed to 5x20mm Size Only	01-08-19	LY
E	Removal of Semko Approval	09-08-25	LY

ELECTRICAL SCHEMATIC:



NOTES:

ELECTRICAL CHARACTERISTICS:

- RATED VOLTAGE: 250VAC
- RATED CURRENT:
 - UL, CSA @ 115/250VAC 10A RMS MAX
- HIPOT RATING (FOR ONE MINUTE)
 - LINE TO GROUND: 2000VAC
 - LINE TO LINE: 2000VAC
- MINIMUM INSERTION RESISTANCE (FOR ONE MINUTE AT 500VDC)
 - LINE TO GROUND: 10M OHM
 - LINE TO LINE: 10M OHM
- DOUBLE 5x20mm FUSEHOLDER (FUSES NOT INCLUDED)
- SOLDER TAB TERMINALS
- FLAMMABILITY CLASS UL94V-0
- PLASTIC CASE
- SCREW MOUNT TYPE
- = VOLTAGE SELECTOR
 - 110-120 VAC
 - 220-240 VAC

APPROVALS: UL, CSA
RoHS COMPLIANT

CONTROLLED

Dim range (mm)	Tolerance +/- (mm)	Qualtek Electronics Corp. PPC DIVISION		
		Part Number: 763-00/001	RoHS Compliant	
0-1	0.15	Description: MULTI-FUNCTION MODULE		
1-6	0.20			
6-18	0.30		UNIT: mm	REV. E
18-50	0.50			
50-120	0.70	Drawn / Date	Checked / Date	Approved / Date
120-250	0.90	B.ZHANG 06-29-05	06-29-05	JJH / 06-29-05
250-500	1.20			