

	CTS35UN			CTS50/70N			CTS50/70NA			CTS95U/120N		
Terminal Width	16 mm			20.5 mm			20.5 mm			25 mm		
Height x Length	58 x 50.5 mm			75.5 x 71 mm			75.5 x 71 mm			90 x 83 mm		
Stripping Length	15 mm			22 mm			24 mm			24 mm		
Insulation Material	Polyamide 6.6			Polyamide 6.6			Polyamide 6.6			Polyamide 6.6		
Type of Connection	2 screw clamps & 1 tapped hole for cross			2 screw clamp connections			2 screw clamp connections			2 screw clamp connections		
Approvals												
Wire Range	12-2 AWG	4-35 sq.mm	12-2 AWG	8-2/0 AWG	10-70 sq.mm	8-2/0 AWG	8-2/0 AWG	10-70 sq.mm	8-2/0 AWG	2-250 KCMIL	25-120 sq.mm	2-250 KCMIL
Voltage Rating	600 V	1000 V	600 V	1000V	1000 V	1000 V	1000V	1000 V	1000 V	1000V	1000 V	1000 V
Current Rating	130 A	125 A	130 A	175 A	192 A	175 A	175 A	192 A	175 A	240 A	269 A	240 A
Torque	25 lb-in	2.5 Nm	25 lb-in	38 lb-in	3 Nm	38 lb-in	38 lb-in	3 Nm	38 lb-in	90 lb-in	6 Nm	90 lb-in



Other Approvals



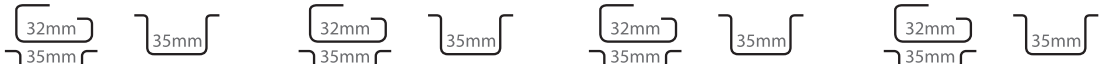
Cat. No.	Std. Pk.	Cat. No.	Std. Pk.	Cat. No.	Std. Pk.	Cat. No.	Std. Pk.
CTS35UN	50	CTS50/70N	20	CTS50/70NA	20	CTS95U/120N	10

Terminal Block

Isolation Partition

PP35UN	50						
--------	----	--	--	--	--	--	--

DIN Rail for ordering information refer to pages 90-91



End Stop for ordering info. refer to page 92



CA702	50	CA202	50	CA202	50	CA202	50
CA802	50	CA102	50	CA102	50	CA102	50

Internal Jumper
 2 pole
 3 pole
 4 pole
 10 pole
 100 pole



CA771/2	50
CA771/3	25
CA771/4	25
CA771/10	10

Insulated Internal Jumper
 2 pole
 3 pole
 4 pole
 10 pole



CA781/2	50
CA781/3	25
CA781/4	25
CA781/10	10

Current Bars
 2 pole
 3 pole
 4 pole
 10 pole
 10 pole (breakable)
 100 pole



CA703/10	100
CA704/10	100
CA705/10	100
CA770/10	100

AUX6

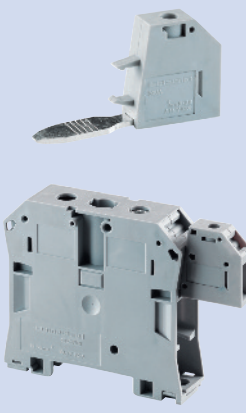
Auxiliary Terminal Block

Used for:

- CTS50/70N
- CTS50/70NA
- CTS95/120N

Wire Range 22-8 AWG

In certain power circuits, there is a need to take an extra connection for an Auxiliary circuit like an indicating light or contactor. The AUX6 terminal easily plugs into the terminal and provides this extra connection point.



Ratings As Per
 IEC60947-7-1
 Voltage/Current: 1000 V / 41 A
 Torque: 0.8 Nm
IEC 60079-7
 Voltage/Current: 630 V / 36 A
 Torque: 0.8 Nm
UL-1059
 Voltage/Current: 600 V / 50 A
 Torque: 14 lb-in
CSA22.2-158
 Voltage/Current: 600 V / 50 A
 Torque: 14 lb-in
Width x Length x Height
 8 x 53.6 x 29.4 mm
Std. Pk.: 10
Marking Tag: MT8

Shorting Link System



CA628/2	10	CA628/2	10	CA629/2	10
CA628/3	10	CA628/3	10	CA629/3	10

Shorting Sleeve & Screw



CA707/S/Q/2	100
-------------	-----

Marking Tags



MT16	100	MT16	100	MT16	100	MT16	100
------	-----	------	-----	------	-----	------	-----