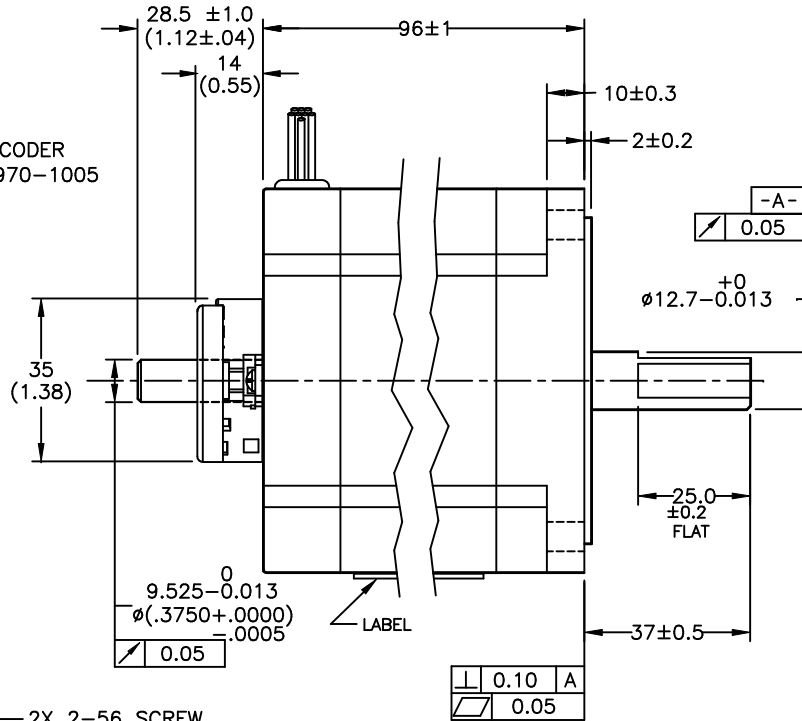
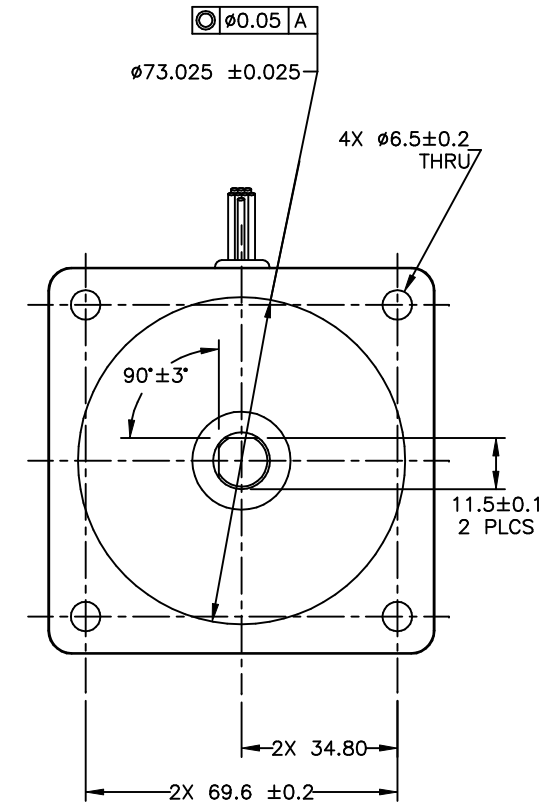


[9][12] ENCODER
P/N 970-1005



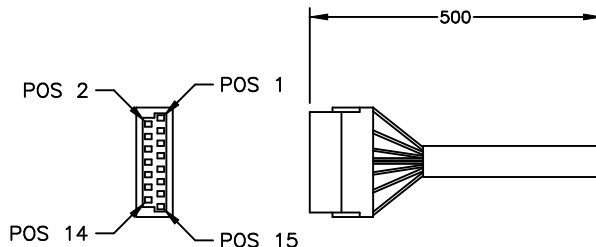
2X 2-56 SCREW



ENCODER RESOLUTION: 2000 cpr

ENCODER CONN TABLE		
PIN	LEAD COLOR	SIGNAL
1	YELLOW	CH A
2	YELLOW/WHITE	CH A-
3	BLUE	CH B
4	BLUE/WHITE	CH B-
5	ORANGE	INDEX
6	ORANGE/WHITE	INDEX-
7	--	N/C
8	--	N/C
9	--	N/C
10	--	N/C
11	--	N/C
12	--	N/C
13	RED	+Vcc
14	BLK	GND
15	--	N/C

[9] ENCODER CABLE 3004-257 DETAIL - REF ONLY.



TOLERANCES		THIRD ANGLE PROJECTION		APPLIED MOTION PRODUCTS, INC.		
DECIMALS: MM (INCH) X.XXX = ± (.005) X.XX = ±0.13 (.010) X.X = ±0.25 (.020)						
ANGLES: MACH. = ±.5° CHAM. = ±5°		APPROVALS	DATE			STEP MOTOR OUTLINE
COMPUTER DATA BASE DRAWING		DRAWN <i>R. JONEZ</i>	3/5/14	B	DWG. NO. HT34-505D-YAA	
		APPROVED		SCALE: NONE		SHEET 2 OF 2