

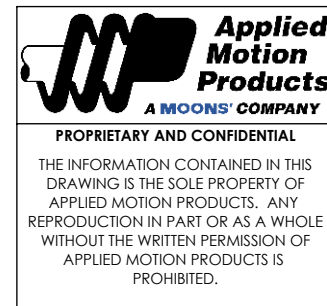
SPECIFICATIONS:

NUMBER OF PHASES: 4	ROTOR INERTIA: 460 g-cm ² (2.51 oz-in ²) NOM
STEPS PER REVOLUTION: 200	DETENT TORQUE: 714 g-cm (9.91 oz-in) MIN
STEP ANGLE: 1.8°	INSULATION CLASS: B
STEP TO STEP ACCURACY: 0.09°	BEARINGS: ABEC 3, DOUBLE SHIELDED
POSITION ACCURACY: 0.09°	TEMP. RISE: 80 °C MAX.
HYSTERESIS: N/A%	OPERATING TEMP. RANGE: -20 TO +50 °C
SHAFT RUNOUT: 0.03 mm T.I.R. MAX	STORAGE TEMP. RANGE: -30 TO +70 °C
RADIAL PLAY: 0.02 mm MAX (0.5 kg RADIAL LOAD)	RELATIVE HUMIDITY RANGE 15 TO 85%
END PLAY: 0.08 mm MAX (0.5 kg AXIAL LOAD)	WEIGHT: 1.0 kg (2.2 lb) APPROXIMATE

CONNECTION	RESISTANCE PER PHASE (ohm $\pm 10\%$)	INDUCTANCE PER PHASE (mH $\pm 20\%$)	RATED CURRENT (Amp)	HOLDING TORQUE (Nm MIN)	HOLDING TORQUE (oz-in MIN)
BI-POLAR SERIES	16.0	61.6	0.71	1.74	246
BI-POLAR PARALLEL	4.0	15.4	1.41	1.74	246
UNI-POLAR	8.0	15.4	1.00	1.23	174

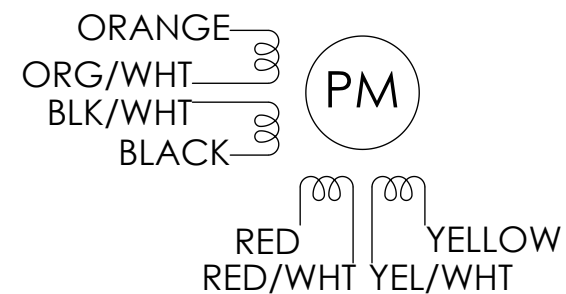
NOTES, UNLESS OTHER WISE SPECIFIED:

- 1 MEASUREMENTS MADE AT RATED CURRENT IN EACH PHASE.
- 2 BETWEEN ANY TWO ADJACENT FULL STEP POSITIONS.
- 3 MAXIMUM ERROR IN 360°.
4. HIPOT 500 VAC, 60Hz FOR ONE MINUTE.
- 5 LEADS: 8, 22 AWG, UL 1430
6. INSULATION RESISTANCE: 100 MEGOHMS MIN AT 500 VDC.
- 7 AS MEASURED ACROSS EACH PHASE.
- 8 AS MEASURED ACROSS EACH PHASE USING AN A.C. INDUCTANCE BRIDGE AT 1KHz.
- 9 AS MEASURED BY THE CHANGE IN RESISTANCE METHOD, WITH RATED CURRENT APPLIED TO 2 PHASES: WITH MOTOR AT REST.
10. ROTOR AND STATOR LAMINATED CONSTRUCTION.
11. THIS MOTOR IS MANUFACTURED IN COMPLIANCE WITH CURRENT EU RoHS DIRECTIVE.
- 12 MOTOR LABEL TO INCLUDE AMP LOGO, AMP WEBSITE ADDRESS, "RoHS" COMPLIANCE LOGO, AMP P/N, "MADE IN (COUNTRY)", AND DATE CODE.



THIRD ANGLE PROJECTION		NAME		DATE		TITLE: STEP MOTOR			
UNLESS OTHERWISE SPECIFIED: DIMENSIONS ARE IN MILLIMETERS TOLERANCES: - ANGULAR: ± 0.5 - ONE DECIMAL PLACE: ± 0.25 - TWO DECIMAL PLACES: ± 0.13		DRAWN	C.BREUNINGER	12/18/23					
		PRE.CHECK	-	-					
		PRE.APPROVAL	-	-					
		FIN.CHECK	E.MERINO	12/19/23					
MATERIAL -		SAP: 4611110007681				SIZE B	DWG. NO. HT23-599	REV E	
FINISH -		ALT DWG. NO.: -							
DO NOT SCALE DRAWING		ALT SAP: -				SCALE: 1:1		SHEET 1 OF 2	

WIRING DIAGRAM



DRIVE SEQUENCE MODEL BI-POLAR FULL STEP

STEP	(A+) ORG & BLK/WHT	(A-) BLK & ORG/WHT	(B+) RED & YEL/WHT	(B-) YEL & RED/WHT	
1	+	-	+	-	
2	-	+	+	-	
3	-	+	-	+	
4	+	-	-	+	
1	+	-	+	-	

CW (CLOCKWISE) AND CCW (COUNTER-CLOCKWISE) ROTATION
WHEN SEEN FROM THE MOUNTING FACE END OF THE MOTOR

4

3

2

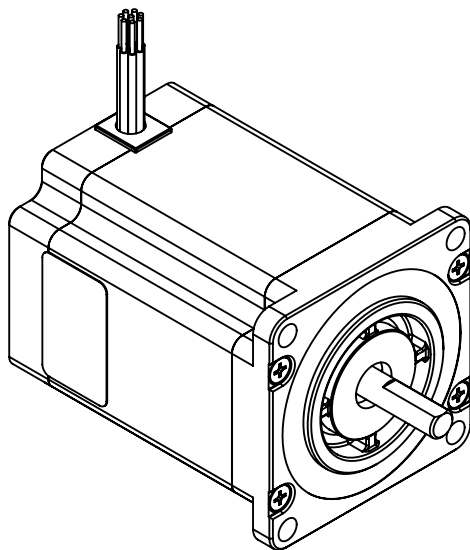
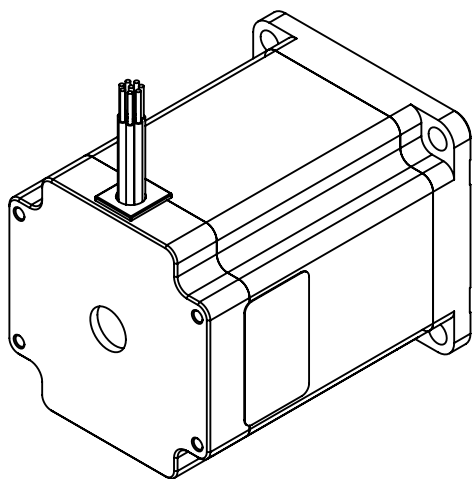
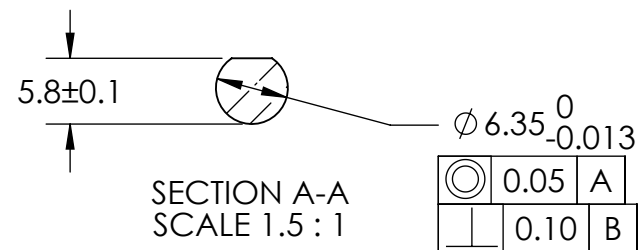
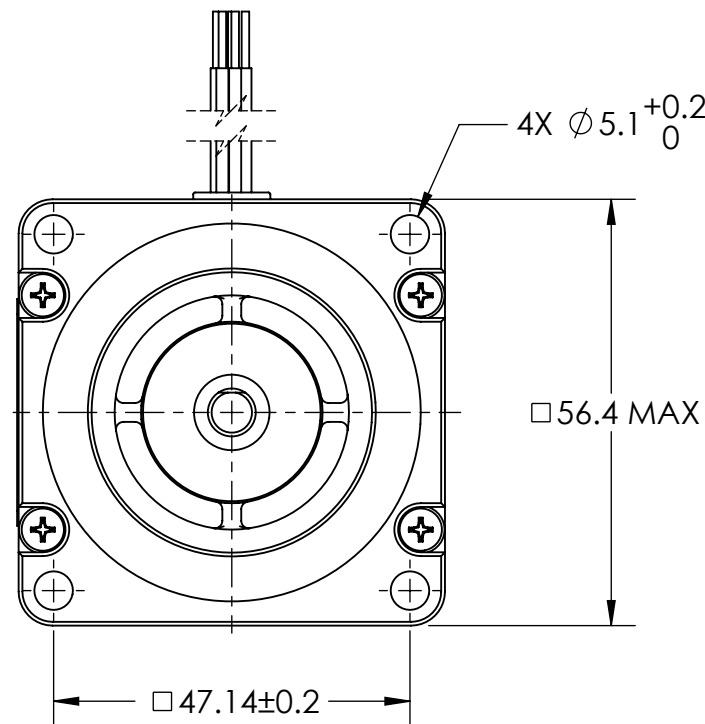
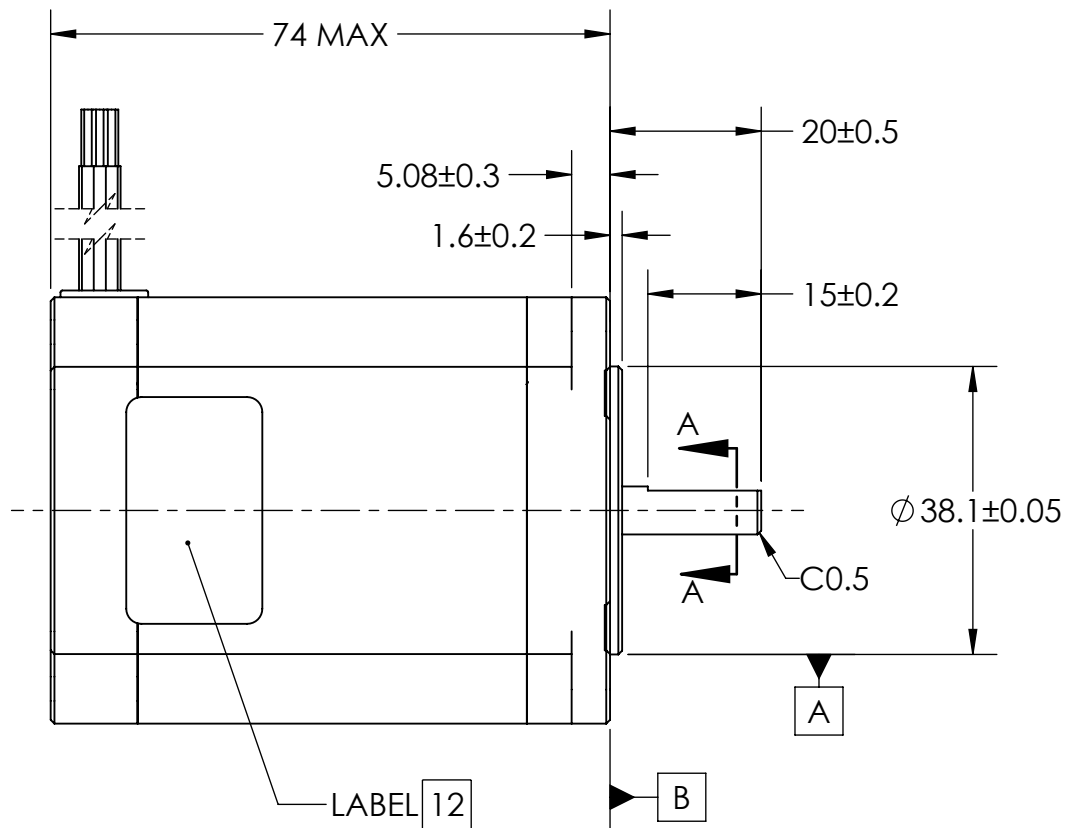
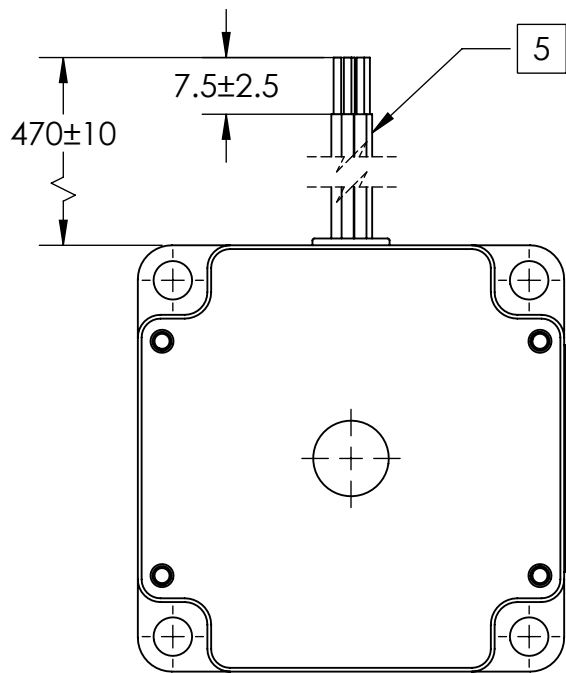
1


B

B

A

A



 Applied Motion Products A MOONS' COMPANY PROPRIETARY AND CONFIDENTIAL THE INFORMATION CONTAINED IN THIS DRAWING IS THE SOLE PROPERTY OF APPLIED MOTION PRODUCTS. ANY REPRODUCTION IN PART OR AS A WHOLE WITHOUT THE WRITTEN PERMISSION OF APPLIED MOTION PRODUCTS IS PROHIBITED.	THIRD ANGLE PROJECTION		NAME	DATE	TITLE: STEP MOTOR		
	UNLESS OTHERWISE SPECIFIED: DIMENSIONS ARE IN MILLIMETERS	DRAWN	C.BREUNINGER	12/18/23			
	TOLERANCES: - ANGULAR: ± 0.5 - ONE DECIMAL PLACE: ± 0.25 - TWO DECIMAL PLACES: ± 0.13	PRE.CHECK	-	-			
	MATERIAL	FIN.CHECK	E.MERINO	12/19/23	SIZE	DWG. NO.	REV
	FINISH	DO NOT SCALE DRAWING	ALT DWG. NO.: -	ALT SAP: -	B	HT23-599	E
					SCALE: 1:1		SHEET 2 OF 2