

4

3

2

1

SPECIFICATIONS:					
NUMBER OF PHASES: 4		ROTOR INERTIA: 260 g-cm ² (1.422 oz-in ²) NOM			
STEPS PER REVOLUTION: 200		DETENT TORQUE: 407.9 g-cm (5.66 oz-in) MIN			
STEP ANGLE: 1.8°		INSULATION CLASS: B			
STEP TO STEP ACCURACY: 0.09°		1	,	2	
POSITION ACCURACY: 0.09°		1	,	3	
HYSTERESIS: N/A%		OPERATING TEMP. RANGE: -20 TO +50°C			
SHAFT RUNOUT: 0.03 mm T.I.R. MAX		STORAGE TEMP. RANGE: -30 TO +70°C			
RADIAL PLAY: 0.02 mm MAX (0.5 kg RADIAL LOAD)		RELATIVE HUMIDITY RANGE 15 TO 85%			
END PLAY: 0.08 mm MAX (0.5 kg AXIAL LOAD)		WEIGHT: 1110 G (39.15 oz) APPROXIMATE			

CONNECTION	RESISTANCE PER PHASE (ohm ±10%)	INDUCTANCE PER PHASE (mH ±20%)	RATED CURRENT (Amp)	HOLDING TORQUE (Nm MIN)	HOLDING TORQUE (oz-in)
BI-POLAR SERIES	1.7	5.7	2.12	1.12	158.6
BI-POLAR PARALLEL	0.4	1.4	4.24	1.12	158.6
UNI-POLAR	0.9	1.4	3.00	0.85	120.4

NOTES, UNLESS OTHER WISE SPECIFIED:

1

MEASUREMENTS MADE AT RATED CURRENT IN EACH PHASE.

2

BETWEEN ANY TWO ADJACENT FULL STEP POSITIONS.

3

MAXIMUM ERROR IN 360°.

4.

HIPOT 500 VAC, 60Hz FOR ONE MINUTE.

5

LEADS: 8, 22 AWG, 7 STRAND MIN. UL AND CSA APPROVED. UL 1430 OR UL 3265

6.

INSULATION RESISTANCE: 100 MEGOHMS MIN AT 500 VDC.

7

AS MEASURED ACROSS EACH PHASE.

8

AS MEASURED ACROSS EACH PHASE USING AN A.C. INDUCTANCE BRIDGE AT 1KHz.

9

AS MEASURED BY THE CHANGE IN RESISTANCE METHOD, WITH RATED CURRENT APPLIED TO 2 PHASES: WITH MOTOR AT REST.

10

BRAKE ATTACHED TO REAR END OF MOTOR. TWO BREAK LEADS ARE 24 AWG, UL1332, RED="+".

11.

ROTOR AND STATOR LAMINATED CONSTRUCTION.

12.

13

MOTOR LABEL TO INCLUDE AMP LOGO, AMP WEBSITE ADDRESS, "RoHS" COMPLIANCE LOGO, AMP P/N, "MADE IN (COUNTRY)", AND DATE CODE.

10

REVISIONS				
ECO #	REV.	DESCRIPTION	DATE	APPROVED
7462	A	INITIAL RELEASE	8/9/16	J. KORDIK
7852	B	REVISED MOTOR WEIGHT	3/1/18	J. KORDIK
8705	C	UPDATED SHAFT RUNOUT, WIRE AWG. END BELL THK	8/23/21	L. LIU
8787	D	REVISED MODEL & UPDATED SHEET FORMAT	5/20/22	L. LIU

WIRING DIAGRAM

DRIVE SEQUENCE MODEL
BI-POLAR PARALLEL FULL STEP

STEP	(A+) ORG & BKL/WHT	(A-) BLK & ORG/WHT	(B+) RED & YEL/WHT	(B-) YEL & RED/WHT
1	+	-	+	-
2	-	+	+	-
3	-	+	-	+
4	+	-	-	+
1	+	-	+	-

CW (CLOCKWISE) AND CCW (COUNTER-CLOCKWISE) ROTATION WHEN SEEN FROM THE MOUNTING FACE END OF THE MOTOR

Applied Motion Products
A MOONS' COMPANY

PROPRIETARY AND CONFIDENTIAL

THE INFORMATION CONTAINED IN THIS DRAWING IS THE SOLE PROPERTY OF APPLIED MOTION PRODUCTS. ANY REPRODUCTION IN PART OR AS A WHOLE WITHOUT THE WRITTEN PERMISSION OF APPLIED MOTION PRODUCTS IS PROHIBITED.

THIRD ANGLE PROJECTION		NAME	DATE	TITLE: STEPPER MOTOR		
UNLESS OTHERWISE SPECIFIED: DIMENSIONS ARE IN MILLIMETERS	DRAWN	Y. LAPNET	5/20/22			
TOLERANCES:	PRE.CHECK					
- ANGULAR: ± 0.5	PRE.APPROVAL					
- ONE DECIMAL PLACE: ± 0.25	FIN.CHECK	C. BREUNINGER	5/20/22			
MATERIAL	SAP: 4611110060849			SIZE B	DWG. NO. HT23-598B	REV D
FINISH	ALT DWG. NO.:					
DO NOT SCALE DRAWING	ALT SAP:			SCALE: 1:1		SHEET 1 OF 2

4

3

2

1

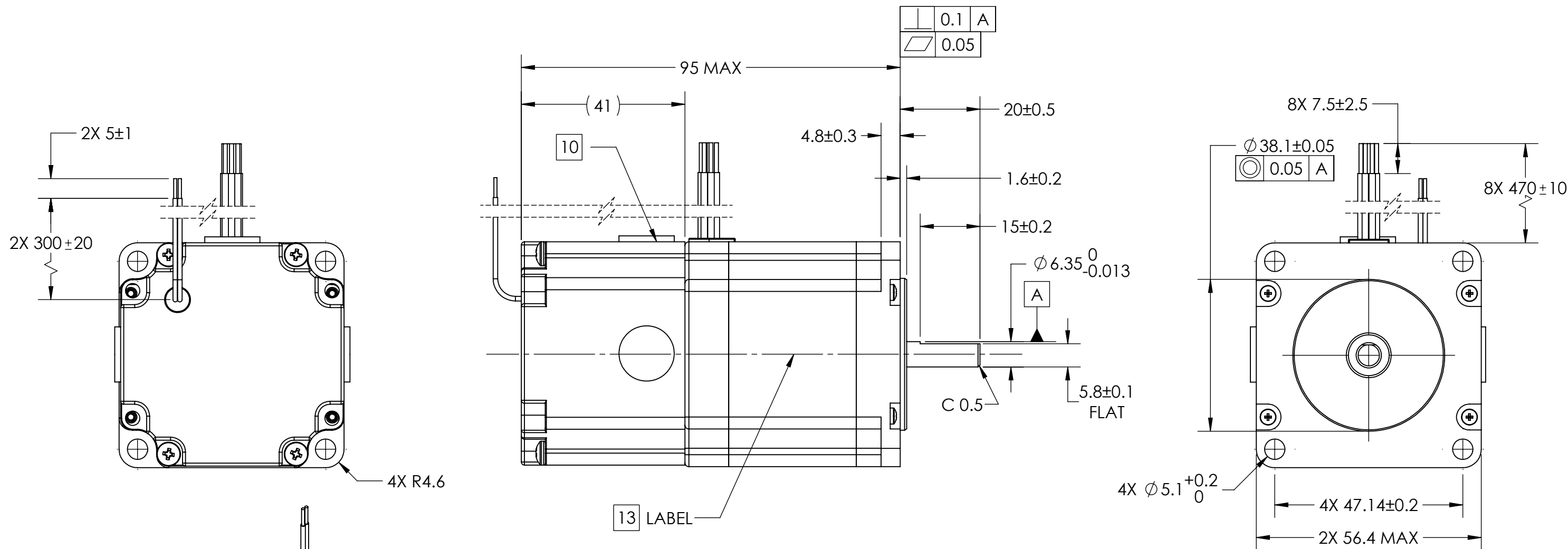
4

3

2

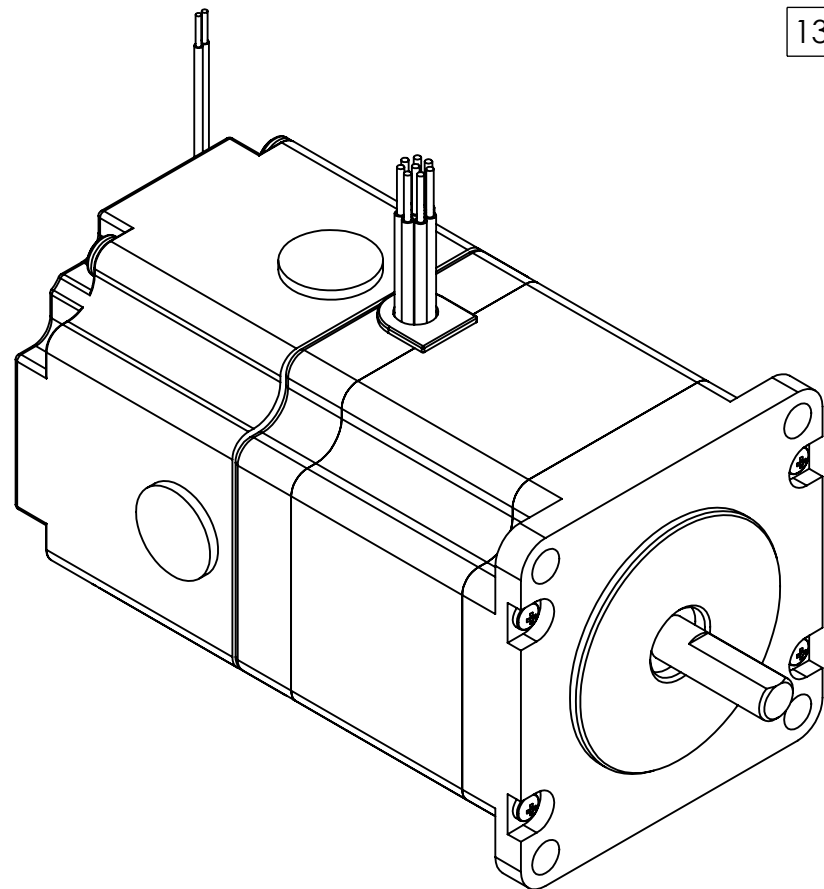
1

B



B

A




A

4

3

2

1

 Applied Motion Products A MOONS' COMPANY PROPRIETARY AND CONFIDENTIAL THE INFORMATION CONTAINED IN THIS DRAWING IS THE SOLE PROPERTY OF APPLIED MOTION PRODUCTS. ANY REPRODUCTION IN PART OR AS A WHOLE WITHOUT THE WRITTEN PERMISSION OF APPLIED MOTION PRODUCTS IS PROHIBITED.	THIRD ANGLE PROJECTION		NAME	DATE	TITLE: STEPPER MOTOR		
	UNLESS OTHERWISE SPECIFIED: DIMENSIONS ARE IN MILLIMETERS	DRAWN	Y. LAPNET	5/20/22			
	TOLERANCES: - ANGULAR: ± 0.5 - ONE DECIMAL PLACE: ± 0.25 - TWO DECIMAL PLACES: ± 0.13	PRE.CHECK					
	MATERIAL	FIN.CHECK	C. BREUNINGER	5/20/22	SIZE	DWG. NO.	REV
	FINISH	DO NOT SCALE DRAWING	ALT DWG. NO.:	ALT SAP:	B	HT23-598B	D
					SCALE: 1:2		SHEET 2 OF 2