

4

3

2

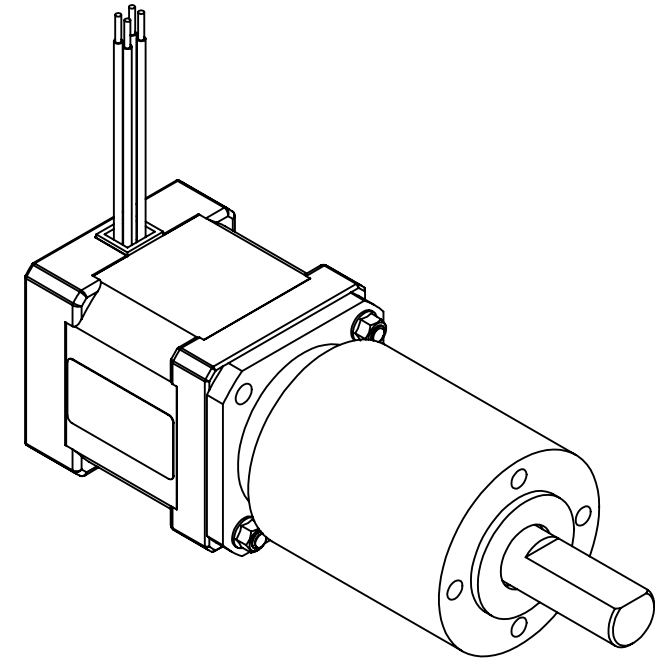
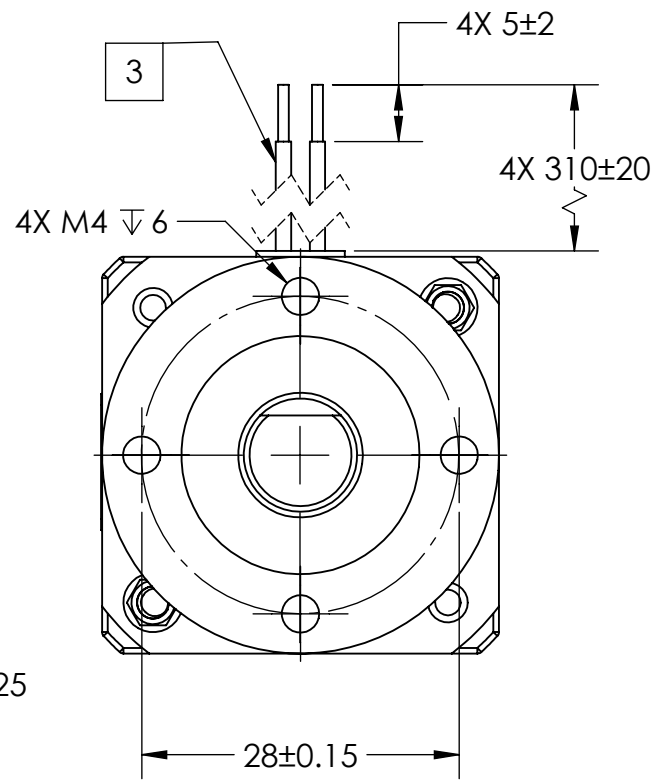
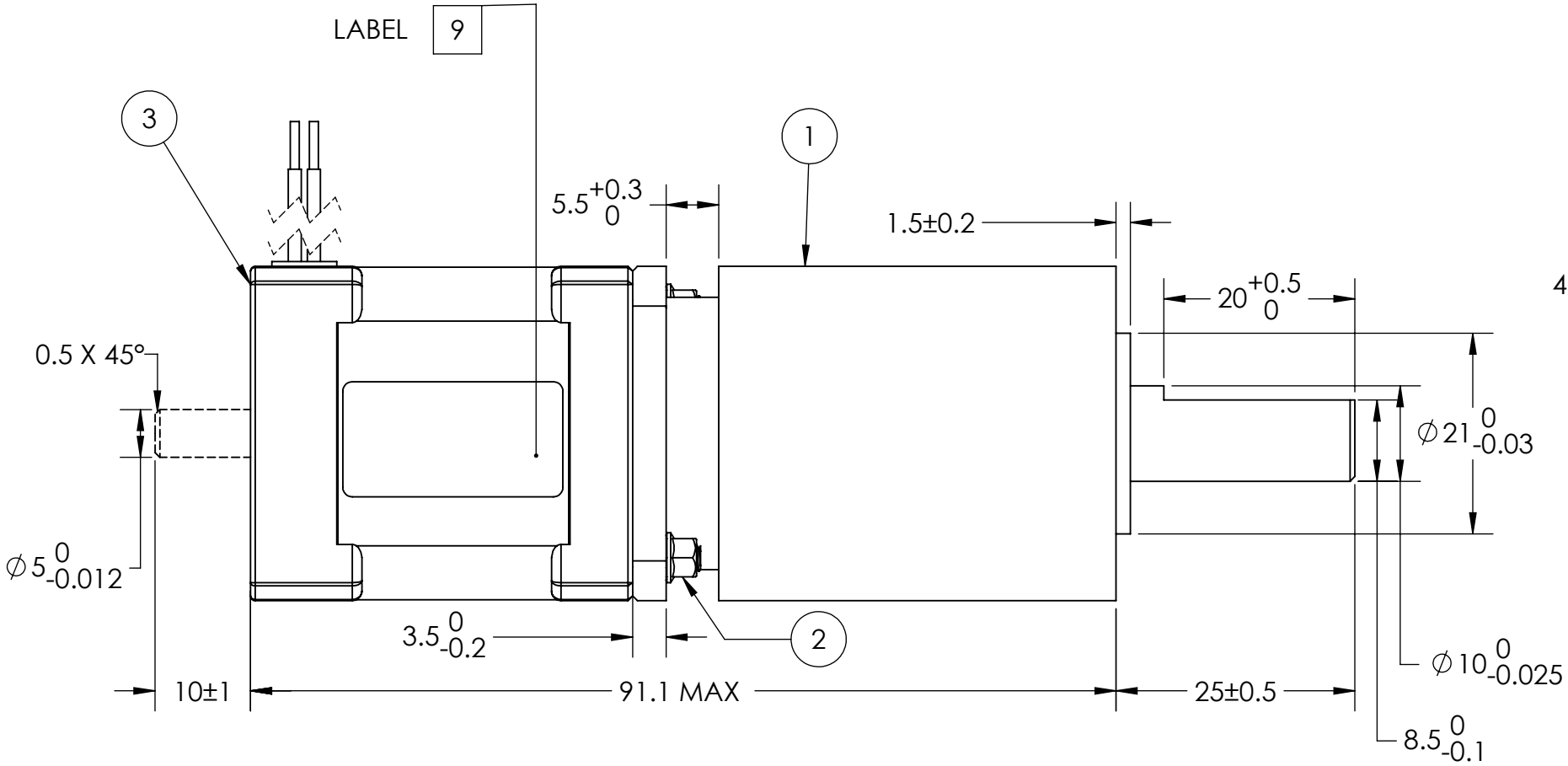
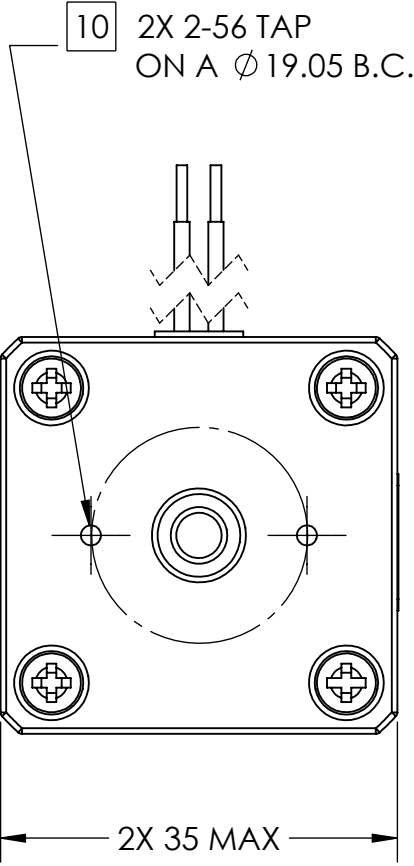
1

B

B


A

A



GEARHEAD MATERIALS:	
GEARTRAIN:	Y15 (1213) STEEL
HOUSING:	304 STAINLESS STEEL
INPUT/OUTPUT FLANGE:	LY12 ALUMINUM
OUTPUT SHAFT:	40Cr STEEL
PINION:	Y15 (1213) STEEL

ITEM NO.	PART NUMBER	DESCRIPTION	QTY.
1	35PH012.07-M1	PH GEARHEAD	1
2	11171924 Z/P OR EQUIVALENT	4-40 NYLON LOCKNUT	2
3	5014-042 10	STEPPER MOTOR	1



Applied Motion Products
A MOONS' COMPANY

PROPRIETARY AND CONFIDENTIAL
THE INFORMATION CONTAINED IN THIS DRAWING IS THE SOLE PROPERTY OF APPLIED MOTION PRODUCTS. ANY REPRODUCTION IN PART OR AS A WHOLE WITHOUT THE WRITTEN PERMISSION OF APPLIED MOTION PRODUCTS IS PROHIBITED.

UNLESS OTHERWISE SPECIFIED:
DIMENSIONS ARE IN MILLIMETERS
TOLERANCES:
ANGULAR: ± 0.5
ONE PLACE DECIMAL ± 0.25
TWO PLACE DECIMAL ± 0.13
THIRD ANGLE PROJECTION

MATERIAL	NAME	DATE
FINISH	Y. LAPNET	1/28/22
DO NOT SCALE DRAWING	R. BUI	1/31/22

COMMENTS:

TITLE:
**STEPPER MOTOR W/
GEARHEAD**

SIZE B	DWG. NO. 5014-042-G012	REV B
SCALE: 3:2	WEIGHT:	SHEET 2 OF 2

4

3

2

1