

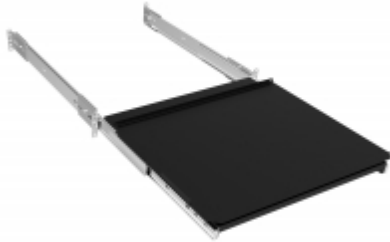


*Quality Products. Service Excellence.*

## Rotating Equipment Slide-out Base *RSKS Series*

Load rated to 129 lbs (59 kg)

### Features



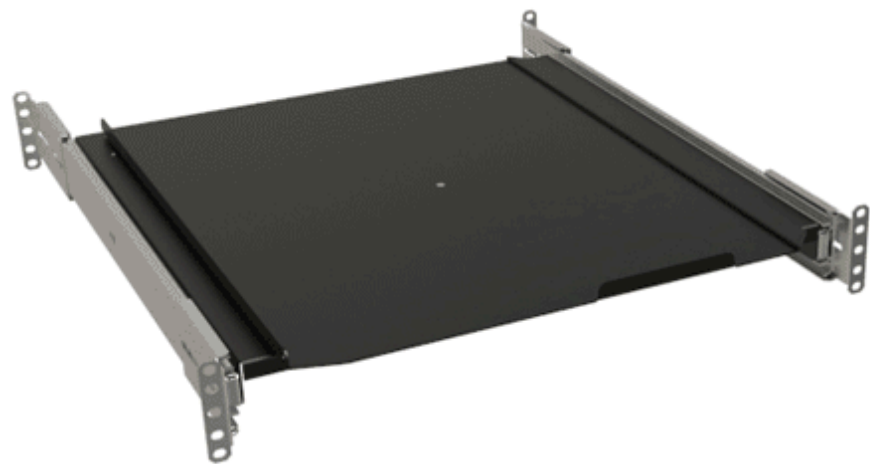
- Standard 19" rack mount
- Supplied as shown complete with two slides and mounting hardware
- Mounts to front & rear panel rails of racks
- Accommodates front rail to rear rail spacing from 19.8" to a maximum of 34.8" deep
- Unique design allows the use of a full-size keyboard or other equipment (not included) housed in the rack shelf.
- The top tray of the drawer swivels clockwise 90 degrees, once pulled outside the front of the rack.
- Optional front locking door adds security where required.
- 129 lbs (59 kg) **load rating**.
  - Slides are tested to BIFMA Standards with load capacity @ 12 times/minute for 55000 cycles minimum.
- Finished in textured RAL9005 black powder coat. Complies with the Greenguard guidelines for indoor air quality.
- TAA-compliant for federal GSA schedule purchases within the USA.
- RoHS and REACH compliant.
- Manufactured in North America.

### Gallery



### Accessories

- Hardware for Rack Mounting Solutions
- Chassis Sliding Rack Rail Kit
- Rack Equipment Installation Tool
- Rack Shelf Slide Block
- Extender Bracket for Sliding Shelves



| Part No.      | Height  | Mounting Dimensions |       |
|---------------|---|---------------------|-------|
|               |   | Rack Units          | Depth |
| RSKS19005BK1  | 5.25  | 3U                  | 15.00 |
| RSKS19DOORBK1 | 3U Hinged Locking Door for RSKS Keyboard Drawer |                     |       |

NOTE: Will NOT work in our 17" deep racks (as slides are too deep).

*Data subject to change without notice*

© 2026. Hammond Manufacturing Ltd. All rights reserved.