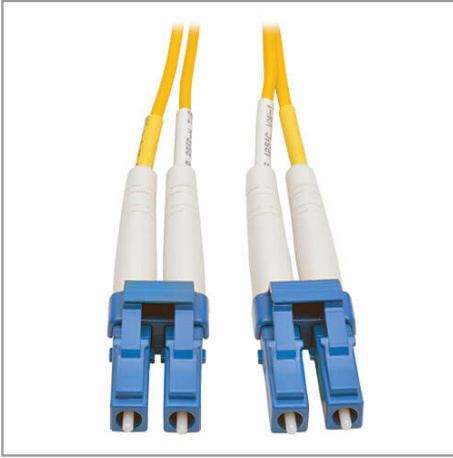


Duplex Singlemode 9/125 Fiber Patch Cable (LC/LC), 6 m (20 ft.)

MODEL NUMBER: **N370-06M**



Premium singlemode fiber optic cabling transmits fast, clear data signals through your LAN with data transfer speeds up to 10 Gbps.

Description

The N370-06M Duplex Singlemode 9/125 Fiber Patch Cable transmits fast, clear data signals through your LAN with data transfer speeds up to 10 Gbps. Designed for network equipment that requires singlemode fiber optic patch cables, this six-meter (20-foot) cable has attenuation loss that meets or exceeds current standards.

The FDDI-rated N370-06M has 9/125 duplex (zipcord) fiber made from glass, instead of polymer. The sturdy LC male connectors meet stringent insertion loss standards and feature beveled edges on their glass ends for easy insertion into a patch panel or switch. The OFNR-rated PVC jacket is yellow to easily identify it as a singlemode cable.

Features

Fast, Clear Data Transmission Through Your LAN

- Data transfer speeds up to 10 Gbps
- Ideal for network equipment that requires singlemode fiber optic patch cables
- Attenuation loss meets or exceeds latest industry standards

Superior Construction for Error-Free Signal Transfer

- 9/125 duplex (zipcord) fiber made from glass
- Sturdy LC male connectors meet stringent insertion loss standards
- Beveled edge on glass ends for easy plug insertion
- Yellow-colored for identification as singlemode

Specifications

OVERVIEW	
UPC Code	037332195760
Technology	Singlemode

Highlights

- Attenuation loss meets or exceeds latest industry standards
- 9/125 duplex (zipcord) fiber made from glass
- LC male connectors meet insertion loss standards
- FDDI- and OFNR-rated
- Beveled edge on glass ends for easy plug insertion

System Requirements

- Fiber optic hardware or NIC card requiring singlemode duplex cable with LC/LC connectors

Package Includes

- N370-06M Duplex Singlemode 9/125 Fiber Patch Cable, 6 m



Powering Business Worldwide

TRIPP LITE
SERIES

Optical Mode	OS2
CONNECTIONS	
Side A - Connector 1	LC DUPLEX (MALE)
Side B - Connector 1	LC DUPLEX (MALE)
Endface Polish	UPC
PHYSICAL	
Cable Jacket Color	Yellow
Connector Color	Blue; White
Cable Jacket Material	LSZH
Cable Jacket Rating	OFNR
Clad Diameter (microns)	125
Core Diameter (microns)	9
Number of Fibers	2
Cable Length (ft.)	19.7
Cable Length (m)	6.01
Cable Length (in.)	236.2
Minimum Bend Radius	20 mm (Dynamic); 10 mm (Static)
Shipping Dimensions (hwd / in.)	9.00 x 7.00 x 0.50
Shipping Dimensions (hwd / cm)	22.86 x 17.78 x 1.27
Shipping Weight (lbs.)	0.12
Shipping Weight (kg)	0.05
Fiber Cable Length	6M (19.7 ft)
ENVIRONMENTAL	
Operating Temperature Range	-4° to 140°F (-20° to 60°C)
Storage Temperature Range	-4° to 140°F (-20° to 60°C)
Operating Humidity Range	5% to 85% RH, Non-Condensing
Storage Humidity Range	35% to 65% RH, Non-Condensing
COMMUNICATIONS	
Network Compatibility	1 Gbps (Gigabit); 10 Gbps; 25 Gbps; 40 Gbps; 100 Gbps; 400 Gbps
Attenuation @ 1310NM	0.36 dB/km
Attenuation @ 1550NM	0.22 dB/km
Insertion Loss	0.30 dB
FEATURES & SPECIFICATIONS	



Powering Business Worldwide

TRIPP LITE
SERIES

Push/Pull Tabs	No
Breakout	No
Trunk	No
STANDARDS & COMPLIANCE	
Product Compliance	RoHS; REACH
WARRANTY & SUPPORT	
Product Warranty Period (Worldwide)	Lifetime limited warranty

1000 Eaton Boulevard
Cleveland, OH 44122
United States
<https://tripplite.eaton.com>

© 2025 Eaton. All Rights Reserved.
Eaton is a registered trademark. All other trademarks
are the property of their respective owners.