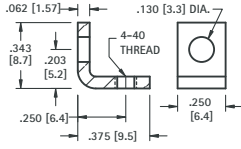




THREADED MOUNTING BRACKETS

THREADED MOUNTING BRACKETS

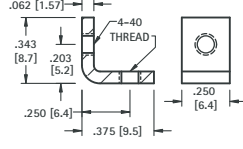
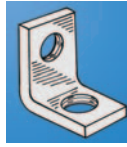
4-40 THREAD



CAT. NO. 612

MATERIAL:
.062 (1.57) Steel, Zinc Plate

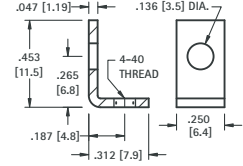
4-40 THREAD



CAT. NO. 621

MATERIAL:
.062 (1.57) Steel, Zinc Plate

4-40 THREAD

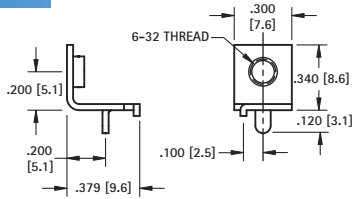


CAT. NO. 616

MATERIAL:
.047 (1.19) Brass, Tin Plate

6-32 THREAD

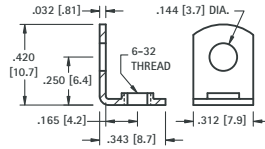
THRU-HOLE MOUNT



CAT. NO. 632

MATERIAL:
.032 (.81) Brass, Tin Plate

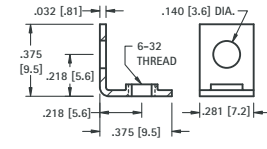
6-32 THREAD



CAT. NO. 614

MATERIAL:
.032 (.81) Brass, Tin Plate

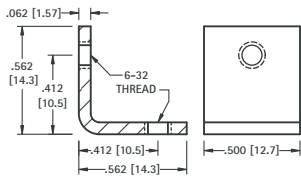
6-32 THREAD



CAT. NO. 634

MATERIAL:
.032 (.81) Brass, Nickel Plate

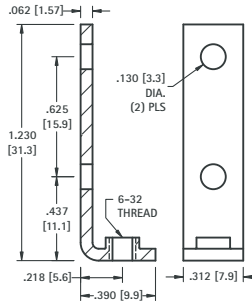
6-32 THREAD



CAT. NO. 4334

MATERIAL:
.062 (1.57) Steel, Nickel Plate

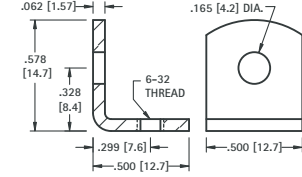
6-32 THREAD



CAT. NO. 708

MATERIAL:
.062 (1.57) Steel, Nickel Plate

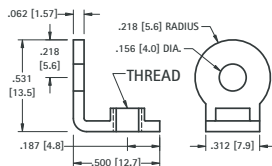
6-32 THREAD



CAT. NO. 617

MATERIAL:
.062 (1.57) Steel, Tin Plate

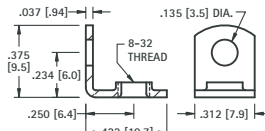
6-32 OR 8-32 THREAD



| CAT. NO. | THREAD |
|----------|--------|
| 4332 | 6-32 |
| 4333 | 8-32 |

MATERIAL:
.062 (1.57) Brass, Nickel Plate

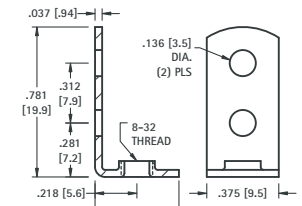
8-32 THREAD



CAT. NO. 611

MATERIAL:
.037 (.94) Brass, Tin Plate

8-32 THREAD



CAT. NO. 631

MATERIAL:
.037 (.94) Steel, Tin Plate