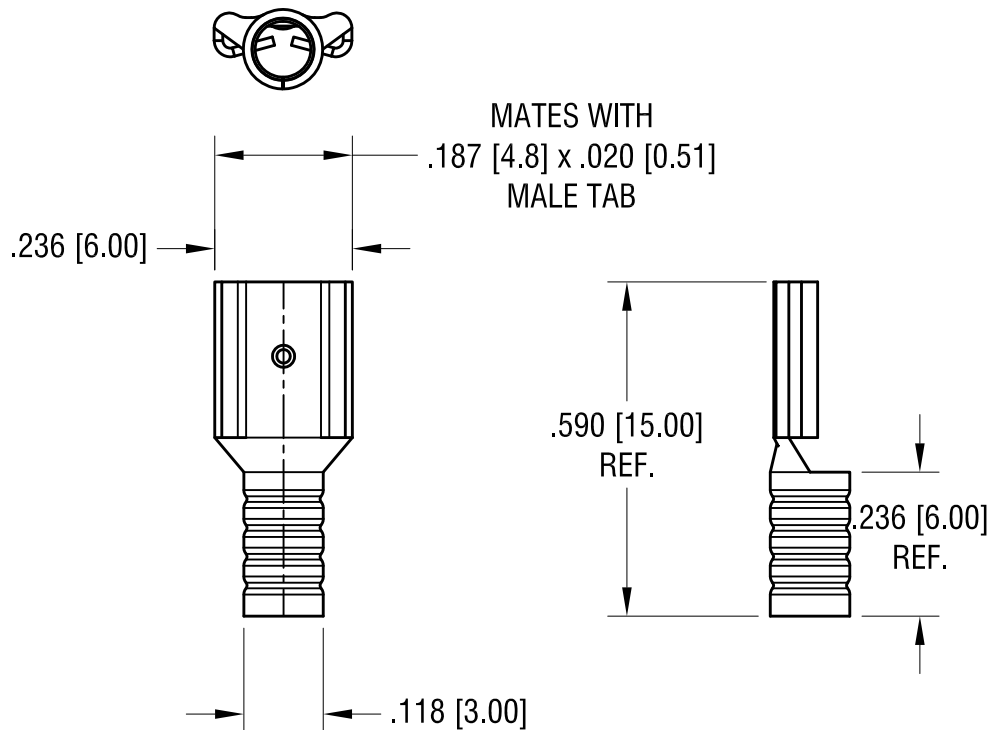


ACTUAL SIZE



NOTE:

1. TERMINAL: BRASS, TIN PLATE
2. ACCOMMODATES WIRE RANGE 22/18 AWG

7.24.24	UPDATED DIMENSIONS&TOLERANCES. CHANGE AS PER PCN 24-038.	C
8.04.21	ECN 21-075 MAT'L WAS COPPER	B
12.04.13	CHANGE AS PER ECN 13-001	A
DATE	DESCRIPTION	REV.

KEYSTONE ELECTRONICS CORP.			
www.keyelco.com • NEW HYDE PARK, NY 11040 • Tel (516) 328-7500			
PART NAME			
SOLDERLESS QUICK-FIT TERMINAL			
MATERIAL			
AS NOTED			
FINISH		DRN BY	DATE
AS NOTED		NT	8.19.08
		APP'D	SCALE
		RH	2.5X
TOLERANCES	INCH [MM]	CODE	DWG NO.
DECIMAL	± .015 [± 0.38]	C	8272
ANGULAR	± 1°		
UNLESS OTHERWISE SPECIFIED			