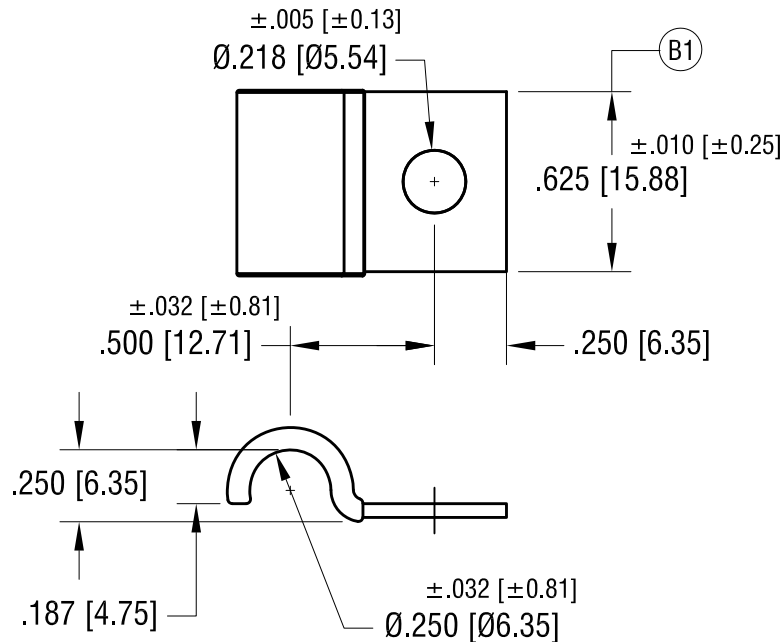
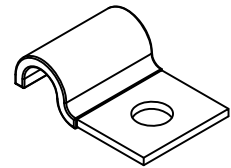


ACTUAL SIZE



NOTE:

1. FINISH: ZINC PLATE, CLEAR CHROMATE.

5.12.25	(B1) WAS .500 [12.70]	B
10.18.06	CHANGE AS PER ECN 06-072	A
DATE	DESCRIPTION	REV.

KEYSTONE ELECTRONICS CORP.			
www.keyelco.com • NEW HYDE PARK NY 11040 • Tel (516)328-7500			
PART NAME			
INSULATED STEEL HALF CLAMP			
MATERIAL			
.048 [1.22] TH'K STEEL, BLACK VINYL			
FINISH		DRN BY	DATE
AS NOTED		BOONE	7.20.05
		APP'D	SCALE
		RH	1.5X
TOLERANCES	INCH [MM]	CODE	DWG NO.
DECIMAL	$\pm .015$ [± 0.38]	C	8161
ANGULAR	$\pm 1^\circ$		
UNLESS OTHERWISE SPECIFIED			