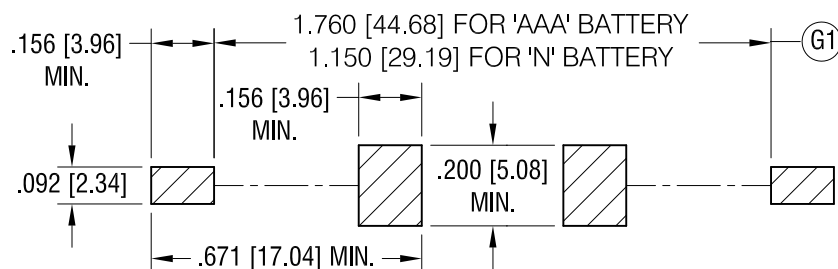
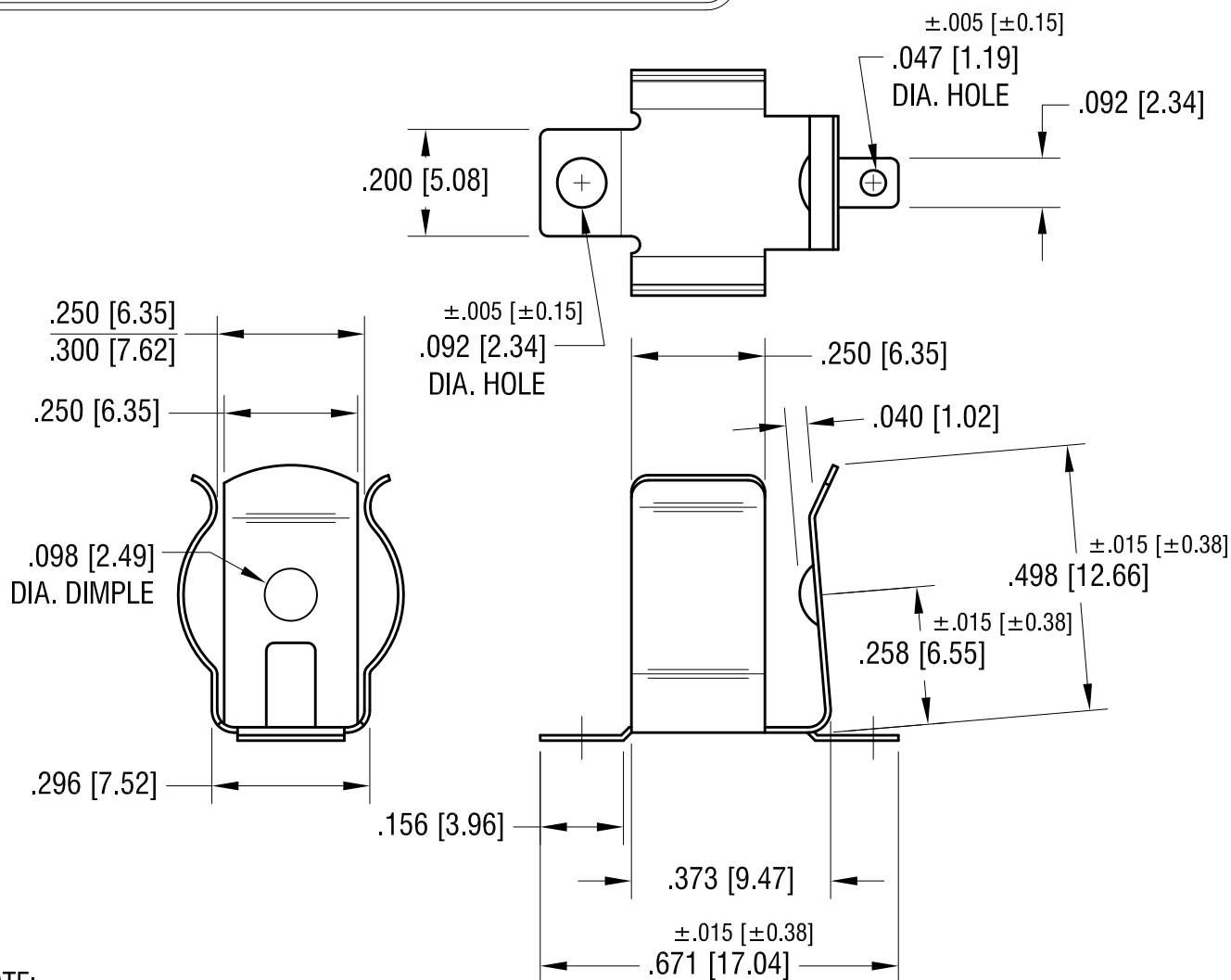


<h1>KEYSTONE ELECTRONICS CORP.</h1> <p>www.keyelco.com • NEW HYDE PARK NY 11040 • Tel (516)328-7500</p>			
PART NAME <h2>SM BATTERY CLIP, ON TAPE</h2>			
MATERIAL <h2>AS NOTED</h2>			
FINISH <h2>AS NOTED</h2>		DRN BY <h2>BOONE</h2>	DATE <h2>4.01.02</h2>
		APP'D <h2>RH</h2>	SCALE <h2>X</h2>
TOLERANCES INCH [MM] DECIMAL $\pm .015$ [ $\pm 0.38$ ] ANGULAR $\pm 1^\circ$ UNLESS OTHERWISE SPECIFIED	CODE <h2>C</h2>	DWG NO. <h2>55TR</h2>	

MOUNTING PAD LAYOUT. REQUIRED SPACING FOR 'AAA' OR 'N' BATTERIES



ACTUAL SIZE



NOTE:

1. HEAT TREAT TO SPRING TEMPER.

10.06.16	CHANGE AS PER ECR 16-066	K
10.05.15	CHANGE AS PER ECN 15-111	H
6.02.15	G1 WAS 1.800/1.200 CHANGE AS PER ECN 01-000	G
1.02.08	CHANGE AS PER ECN 08-005	F
DATE	DESCRIPTION	REV.

KEYSTONE ELECTRONICS CORP.			
www.keyelco.com • NEW HYDE PARK, NY 11040 • Tel (516) 328-7500			
PART NAME		'AAA'-'N' SMT BATTERY CLIP	
MATERIAL		.010 [0.25] TH'K ANNEALED SPRING STEEL	
FINISH		TIN NICKEL PLATE	
TOLERANCES		INCH	[MM]
DECIMAL		±.010	[±0.25]
ANGULAR		± 1°	
UNLESS OTHERWISE SPECIFIED			
CODE		C	
DWG NO.		55	