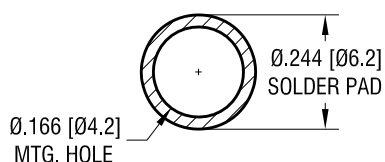
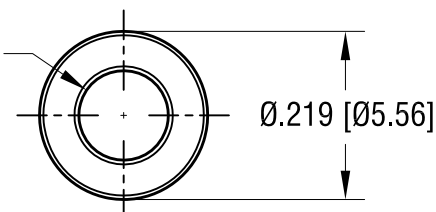


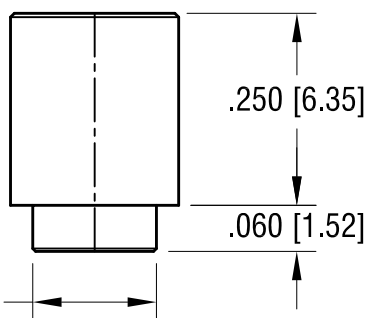
MOUNTING DETAIL



Ø.120 [Ø3.05]
CLEAR HOLE THRU



ACTUAL SIZE



NOTES:

- SUPPLIED ON TAPE AND REEL ONLY.
TAPE AND REEL SPECIFICATIONS:
- TAPE:
MAT'L - ALL CONDUCTIVE POLYSTYRENE CARRIER
ANSI/EIA-481 STANDARD
- REEL:
13" [330.2] DIA. 650 PIECES PER REEL
- REELS TO BE SUPPLIED IN SEALED BAGS
WITH VCI PROTECTION.
- KAPTON TAPE ADDED TO TOP SURFACE
OF STANDOFF.

7.25.24	SPECIFIED VCI PACKAGING.	A
DATE	DESCRIPTION	REV.

KEYSTONE ELECTRONICS CORP.			
www.keyelco.com • NEW HYDE PARK NY 11040 • Tel (516)328-7500			
PART NAME		SM STANDOFF	
MATERIAL		STEEL	
FINISH		DRN BY	DATE
MATTE TIN PLATE		NT	1.03.17
		APP'D	SCALE
		RH	4X, 1X
TOLERANCES	INCH	[MM]	CODE
DECIMAL	± .005	[± 0.13]	DWG NO.
ANGULAR	± 1°		
UNLESS OTHERWISE SPECIFIED			C
			4888