

THE INFORMATION CONTAINED HEREIN IS CONSIDERED "PROPRIETARY" TO BEL FUSE INC. AND SHALL NOT BE COPIED, REPRODUCED OR DISCLOSED WITHOUT THE WRITTEN APPROVAL OF BEL FUSE INC.



LED1 POLARITY			LED2 POLARITY		
PIN 11	PIN 12	COLOR	PIN 13	PIN 14	COLOR
-	+	GREEN	-	+	GREEN
+	-	YELLOW	+	-	YELLOW

# ELECTRICAL CHARACTERISTICS @ 25°C

## URNS RATIO

TP1	1CT : 1CT ±2%
TP2	1CT : 1CT ±2%
TP3	1CT : 1CT ±2%
TP4	1CT : 1CT ±2%

□CL @ 100kHz/100mVRMS  
8mA DC BIAS (0°C - 70°C)

## INS. LOSS

100kHz TO 125MHz -1.2 dB MAX

## RET. LOSS (MIN) @ 100ΩHMS ±15%

0.5MHz-40MHz	-18 dB
40MHz-100MHz	-12+20LOG(f/80MHz) dB

## CM TO CM REJ

100kHz - 100MHz -30 dB MIN

## CM TO DM REJ

100kHz - 100MHz -35 dB MIN

## CROSS TALK

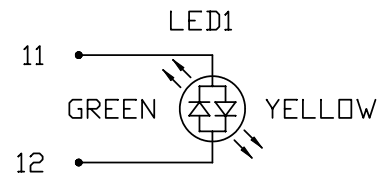
1MHz - 60MHz	-35 dB MIN
60MHz -100MHz	-25 dB MIN

HIPOT (Isolation Voltage): 1500 Vrms

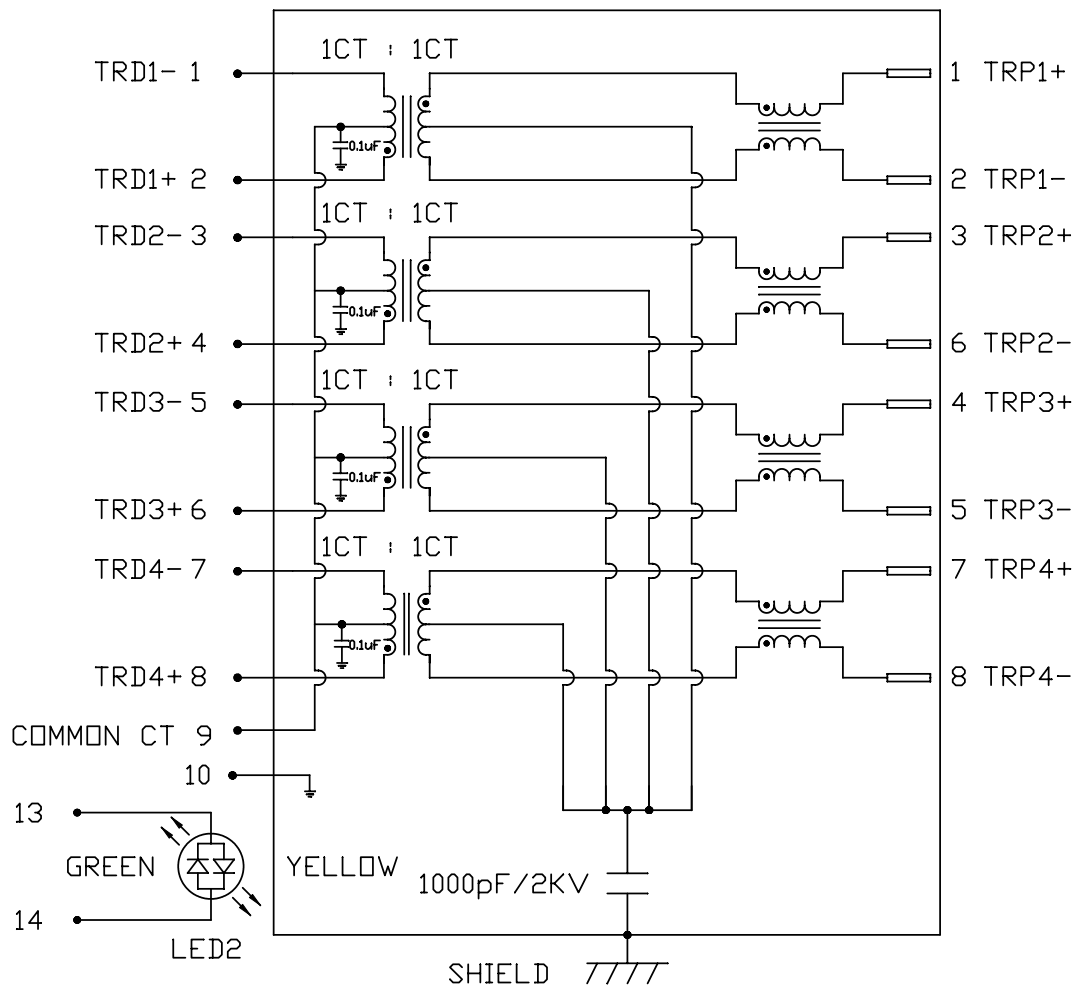
100% OF PRODUCTION TESTED TO COMPLY WITH  
IEEE 802.3 ISOLATION REQUIREMENTS.

LED 1 & 2 (LED POLARITY DIFFERENT THAN BEL STANDARD)

VF (FORWARD VOLTAGE)	IF=20mA	GREEN	2.2V TYP.
		YELLOW	2.1V TYP.
λD (DOMINANT WAVELENGTH)	IF=20mA	GREEN	565nm TYP.
		YELLOW	590nm TYP.



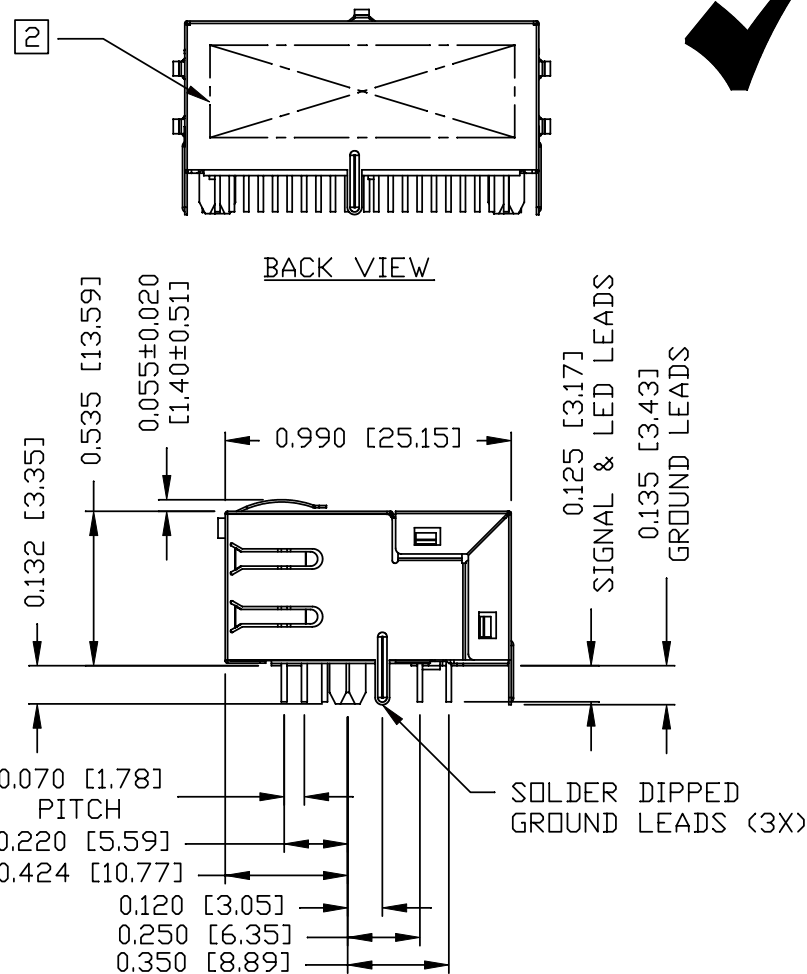
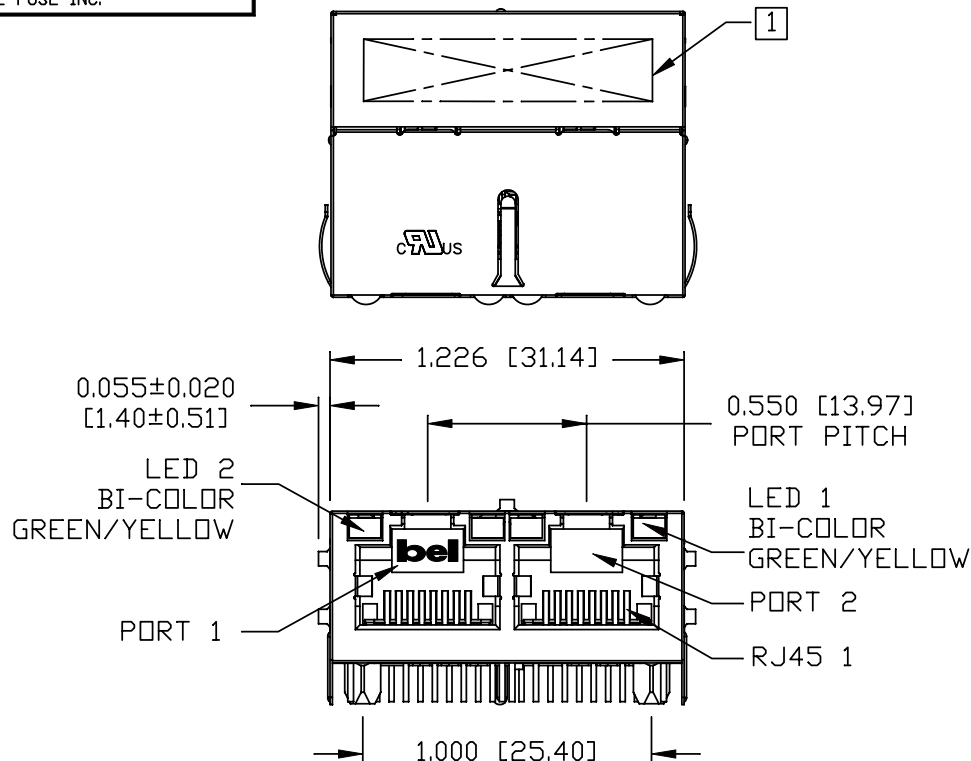
## SCHEMATIC



ORIGINATED BY		DATE	TITLE	PART NO. / DRAWING NO.	STANDARD DIM.		[ ] METRIC DIM. AS REFERENCE	
CHOW WANGCHUNG		07-08-09			TOL. IN INCH		UNIT : INCH [mm]	REV. : C
DRAWN BY		DATE			.X		SCALE : N/A	SIZE : A4
LEE WEIDE		07-08-09	1X2 gigabit MagJack® (WITH LED) PATENTED	0875-1C2T-E3 FILE NAME 0875-1C2T-E3_C.DWG	.XX			PAGE : 2
					.XXX			



THE INFORMATION CONTAINED HEREIN IS CONSIDERED "PROPRIETARY" TO BEL FUSE INC. AND SHALL NOT BE COPIED, REPRODUCED OR DISCLOSED WITHOUT THE WRITTEN APPROVAL OF BEL FUSE INC.



#### NOTES:

PLASTIC HOUSING: THERMOPLASTIC PBT  
 FLAMMABILITY RATING UL 94V-0  
 CONTACTS PLATING: 15 MICRO-INCH HARD GOLD PLATING  
 PINS: TIN-COATED COPPER WIRE, DIA 0.018 INCH.  
 METAL SHIELD: NICKEL PLATED ON COPPER ALLOY.  
 (ALL GROUND LEADS ARE SOLDER DIPPED)

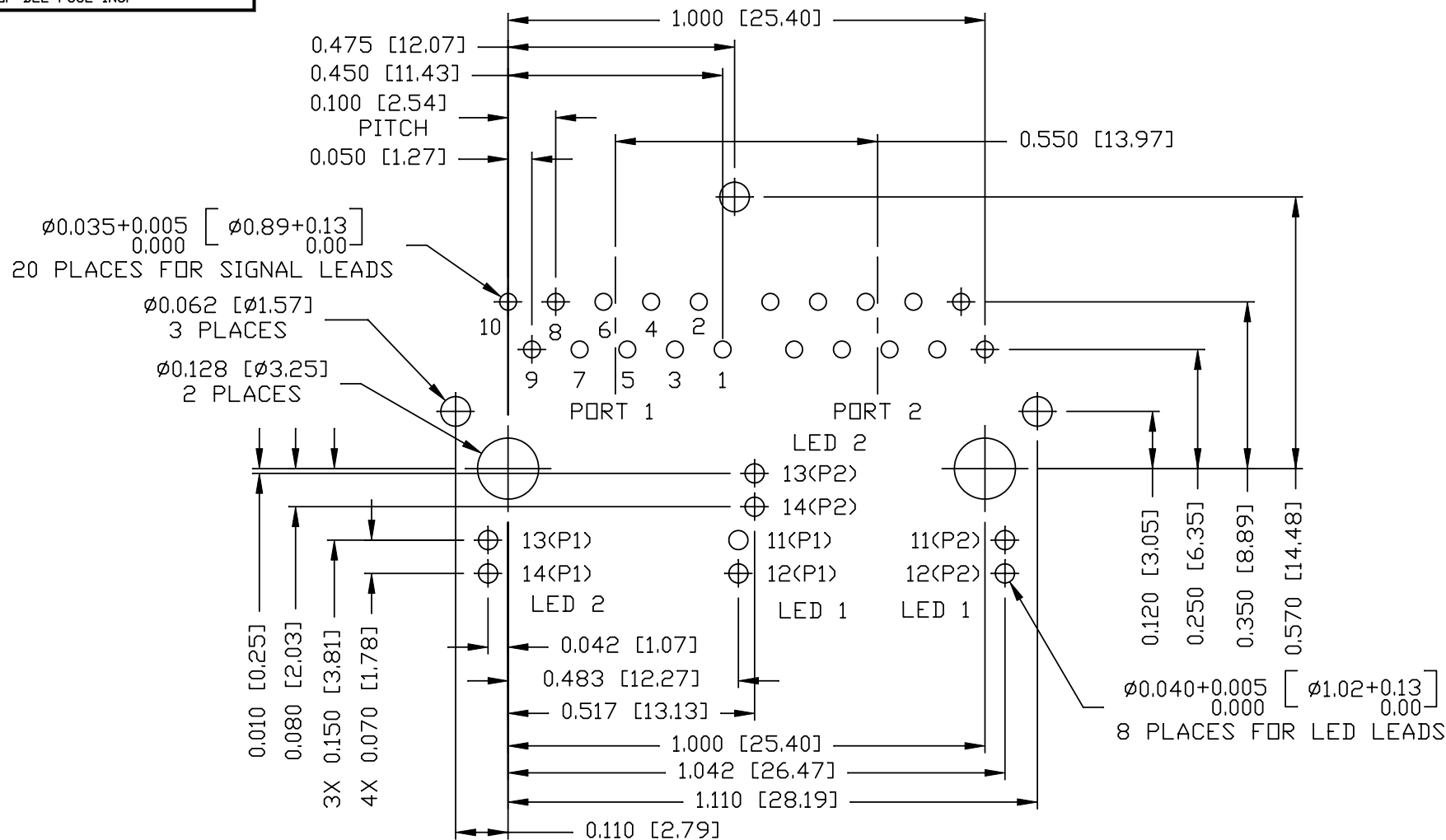
- 1 MARK PART WITH MFG LOGO AND MFG NAME.  
 2 MARK PART WITH PART NUMBER DATE CODE AND PATENTED.  
 cFUSE UL RECOGNIZED - FILE #E196366 AND E169987.

2. JACK CAVITY CONFORMS TO FCC RULES AND REGULATIONS.  
 3. RoHS COMPLIANCE, PER EU DIRECTIVE 2002/95/EC  
 4. THE PRODUCT IS PATENTED, THE PATENT NUMBRE IS U.S. PAT. 5,736,910.

ORIGINATED BY	DATE	TITLE	PART NO. / DRAWING NO.	STANDARD DIM. TOL. IN INCH	[ ] METRIC DIM. AS REFERENCE
LIU QIN	07-08-09	1x2 gigabit MagJack®	0875-1C2T-E3	.X	UNIT : INCH [mm]
DRAWN BY	DATE	(WITH LED)	FILE NAME	.XX	SCALE : N/A
XIAN JIAXIN	07-08-09	PATENTED	0875-1C2T-E3_C.DWG	.XXX ±0.010	REV. : C
					SIZE : A4
					PAGE : 3



THE INFORMATION CONTAINED HEREIN IS CONSIDERED  
"PROPRIETARY" TO BEL FUSE INC. AND SHALL NOT BE  
COPIED, REPRODUCED OR DISCLOSED WITHOUT THE  
WRITTEN APPROVAL OF BEL FUSE INC.



RECOMMENDED PCB FOOTPRINT  
COMPONENT SIDE VIEW

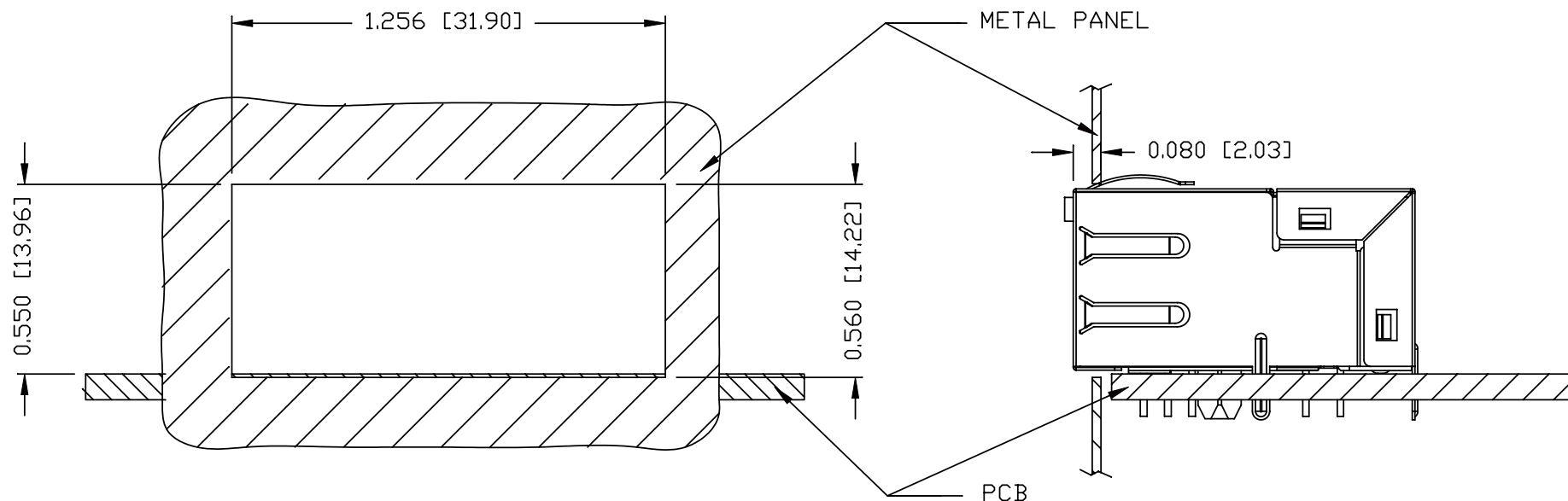
ORIGINATED BY	DATE	TITLE	PART NO. / DRAWING NO.	STANDARD DIM. TOL. IN INCH	[ ] METRIC DIM. AS REFERENCE	
LIU QIN	07-08-09	1X2 gigabit MagJack® (WITH LED) PATENTED	0875-1C2T-E3	.X	UNIT : INCH [mm]	REV. : C
DRAWN BY	DATE		FILE NAME	.XX	SCALE : N/A	SIZE : A4
XIAN JIAXIN	07-08-09		0875-1C2T-E3_C.DWG	.XXX ±0.004		PAGE : 4



THE INFORMATION CONTAINED HEREIN IS CONSIDERED "PROPRIETARY" TO BEL FUSE INC. AND SHALL NOT BE COPIED, REPRODUCED OR DISCLOSED WITHOUT THE WRITTEN APPROVAL OF BEL FUSE INC.



# SUGGESTED PANEL OPENING



## NOTES:

THE DISTANCE OF PANEL INSIDE SURFACE RELATIVE TO FRONT SURFACE OF PART IS ONLY A SUGGESTION. IN CASE THIS DISTANCE IS DIFFERENT, THE REQUIRED PANEL OPENING DIMENSIONS CHANGE ACCORDINGLY.

## PACKING INFORMATION

PACKING TRAY : 0200-9999-G4 (TOP)  
0200-9999-G5 (BOTTOM)

PACKING QUANTITY : 49 PCS FINISHED GOODS PER TRAY  
8 TRAYS (392 PCS FINISHED GOODS) PER CARTON BOX

NOTE : CARDBOARDS ARE PLACED BETWEEN LAYERS OF PACKING TRAY INSIDE CARTON BOX  
(INCLUDE THE UPPERMOST AND LOWERMOST TRAY)

ORIGINATED BY	DATE	TITLE	PART NO. / DRAWING NO.		STANDARD DIM. TOL. IN INCH		[ ] METRIC DIM. AS REFERENCE		
LIU QIN	07-08-09		0875-1C2T-E3		.X		UNIT : INCH [mm]	REV. : C	
DRAWN BY	DATE	1X2 gigabit MagJack® (WITH LED) PATENTED	FILE NAME		.XX		SCALE : N/A	SIZE : A4	
XIAN JIAXIN	07-08-09		0875-1C2T-E3_C.DWG		.XXX	±0.004		PAGE : 5	