

Product data sheet

Specifications

SQUARE D



All in one, Homeline, CSED, ringed socket, 200A, surface mount, 20 spaces, 40 circuits, 22kA SCCR, no bypass, solar ready

SC2040M200PS

Product availability: Stock - Normally stocked in distribution facility

Main

Product or Component Type	All-In-One
Range of Product	Homeline
Meter socket type	Ringed
Hub type	A

Complementary

Line Rated Current	200 A
Short-circuit current	22 kA
Mounting	Surface
Number of spaces	20
Number of circuits	40
Number of Tandem Breakers	20
Electrical connection	Lugs, line side Lugs, service ground
Wire Size	AWG 4...250 kcmil (aluminium/copper) line side AWG 14...AWG 2/0 (aluminium/copper) service ground
Tightening torque	Main lugs 250 lb.in, AWG 4...250 kcmil, aluminium/copper Service ground 50 lb.in, AWG 14...AWG 2/0, copper Service ground 50 lb.in, AWG 12...AWG 2/0, aluminium Branch lugs 50 lb.in, AWG 14...AWG 2/0, copper Branch lugs 50 lb.in, AWG 12...AWG 2/0, aluminium Branch lugs 35 lb.in, AWG 6...AWG 4, aluminium/copper Branch lugs 25 lb.in, AWG 8, aluminium/copper Branch lugs 20 lb.in, AWG 14...AWG 10, aluminium/copper Branch lugs 20 lb.in, AWG 12...AWG 10, aluminium/copper Cover 10 lb.in
Disconnect Rating	200 A
Branch Breaker Rating	200 A
Service feed location	OH UG
Bypass type	No bypass
Connections - Terminals	Plug-on neutral
Color	Grey
Product Compatibility	Solar ready
Width	21.50 in (546.10 mm)

Price is "List Price" and may be subject to a trade discount – check with your local distributor or retailer for actual price.

Depth	5.79 in (147.07 mm)
Height	30.39 in (771.91 mm)
Bus Rating	225.0 A

Environment

NEMA Rating	NEMA 3R
-------------	---------

Ordering and shipping details

Category	US1DE3A00148
Discount Schedule	DE3A
GTIN	785901342267
Returnability	Yes
Country of origin	MX

Packing Units

Unit Type of Package 1	PCE
Nbr. of units in pkg.	1
Package 1 Height	7.70 in (19.558 cm)
Package 1 Width	22.30 in (56.642 cm)
Package 1 Length	30.60 in (77.724 cm)
Package weight(Lbs)	52.699 lb(US) (23.904 kg)
Unit Type of Package 2	PAL
Number of Units in Package 2	10
Package 2 Height	40.00 in (101.600 cm)
Package 2 Width	42.00 in (106.680 cm)
Package 2 Length	48.00 in (121.920 cm)
Package 2 Weight	562.999 lb(US) (255.372 kg)



Environmental Data

Schneider Electric aims to achieve Net Zero status by 2050 through supply chain partnerships, lower impact materials, and circularity via our ongoing “Use Better, Use Longer, Use Again” campaign to extend product lifetimes and recyclability.

[Environmental Data explained >](#)

[How we assess product sustainability >](#)

Environmental footprint

Carbon footprint (kg CO2 eq, Total Life cycle) 419

Environmental Disclosure [Product Environmental Profile](#)

Use Better

Materials and Substances

Packaging made with recycled cardboard No

Packaging without single use plastic Yes

[EU RoHS Directive](#) Compliant with Exemptions

REACH Regulation [REACH Declaration](#)

California proposition 65 **WARNING:** This product can expose you to chemicals including: Lead and lead compounds, which is known to the State of California to cause cancer and birth defects or other reproductive harm. For more information go to www.P65Warnings.ca.gov

Use Again

Repack and remanufacture

Circularity Profile No need of specific recycling operations

Take-back No

Technical Illustration

Dimensions

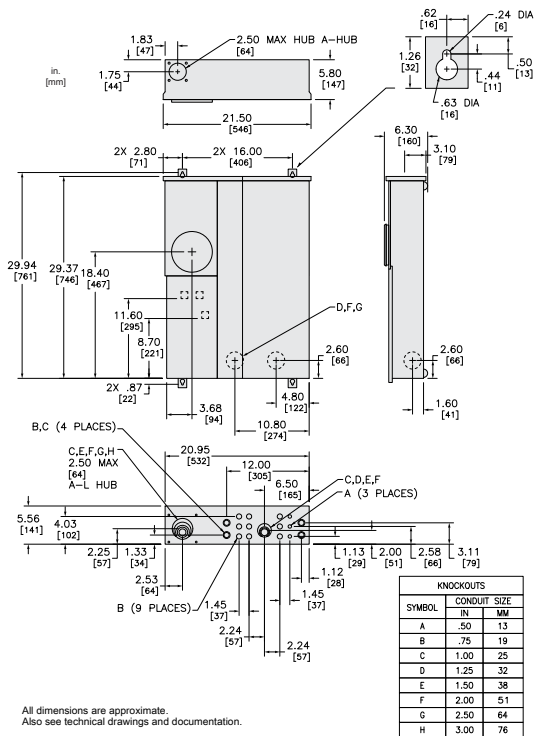


Image of product / Alternate images

Alternative

