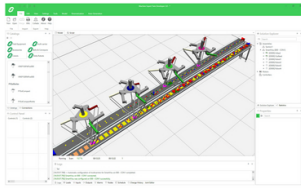


Product data sheet

Specifications



license, Ecostruxure Machine Expert Twin, builder, node locked, annual, team, 10 users, unlimited objects

ESETBSCZLTXAZZ

Product availability: Non-Stock - Not normally stocked in distribution facility

Main

Range of Product	Ecostruxure Machine Expert Twin
Product or Component Type	License
Format	Digital
Software Type	Builder
Type of License	Node locked license
Software Version	V2.2
Operating system requirement	Windows 10
User Language	English

Complementary

License category	Temporary
Software Function	Simulation Machine design Virtual commissioning Virtual engineering Software testing
Range Compatibility	Lexium MC12 multi carrier Lexium P Lexium T EcoStruxure Machine Expert Modicon M262 Modicon LMC058 Lexium Cobot PacDrive 3 LMC Eco PacDrive 3 LMC Pro PacDrive 3 LMC Pro2 PacDrive 3 EcoStruxure Automation Expert
Product Compatibility	Third party controller
Communication port protocol	OPC UA Modbus TCP RFC1006 TwinCAT ADS Siemens S7 communication Siemens Fetch/Write TCP/UDP
License duration	12 month(s)
License size	Team (10 users) Unlimited objects
Memory requirement	900 MB
System Requirements	8 GB DDR3 RAM
Processor requirement	Quad core CPU

Price is "List Price" and may be subject to a trade discount – check with your local distributor or retailer for actual price.

Video controller type	Nvidia Gt 710 2GDH3
-----------------------	---------------------

Ordering and shipping details

Category	US10MSX22533
----------	--------------

Discount Schedule	0MSX
-------------------	------

GTIN	3606482197831
------	---------------

Returnability	No
---------------	----

Country of origin	US
-------------------	----

Packing Units

Unit Type of Package 1	PCE
------------------------	-----

Nbr. of units in pkg.	1
-----------------------	---

Package 1 Height	0.39 in (1 cm)
------------------	----------------

Package 1 Width	0.39 in (1 cm)
-----------------	----------------

Package 1 Length	0.39 in (1 cm)
------------------	----------------

Package weight(Lbs)	0.04 oz (1 g)
---------------------	---------------