

Product data sheet

Specifications



connection sub-base accessory - redundant input sub-base

ABE7ACC11

Main

Accessory / separate part designation	Redundant input sub-base
Accessory / separate part destination	PLC
Accessory / separate part category	Connection accessories
Accessory / separate part type	Splitter sub-base
Range of product	Modicon ABE7
Sub-base type	Redundant input sub-base
Number of channels	16
Quantity per set	Set of 1

Complementary

Channel splitting	2 x 16
Product weight	0.075 kg

Packing Units

Unit Type of Package 1	PCE
Number of Units in Package 1	1
Package 1 Height	7.2 cm
Package 1 Width	8.0 cm
Package 1 Length	9.5 cm
Package 1 Weight	123.0 g
Unit Type of Package 2	S03
Number of Units in Package 2	24
Package 2 Height	30.0 cm
Package 2 Width	30.0 cm
Package 2 Length	40.0 cm
Package 2 Weight	3.429 kg

Contractual warranty

Warranty	18 months
----------	-----------


Disclaimer: This documentation is not intended as a substitute for and is not to be used for determining suitability or reliability of these products for specific user applications

Schneider Electric aims to achieve Net Zero status by 2050 through supply chain partnerships, lower impact materials, and circularity via our ongoing “Use Better, Use Longer, Use Again” campaign to extend product lifetimes and recyclability.



[Environmental Data explained >](#)

[How we assess product sustainability >](#)

Use Better

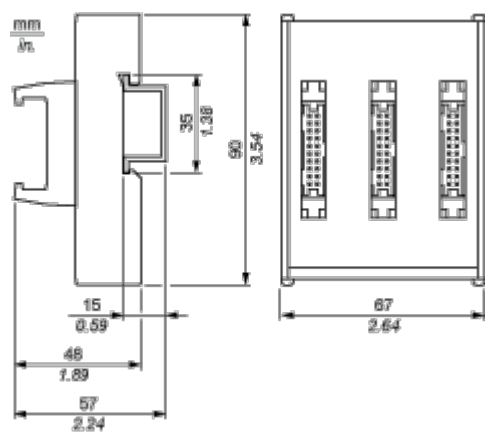
 Materials and Substances	
Packaging made with recycled cardboard	No
Packaging without single use plastic	No
EU RoHS Directive	Pro-active compliance (Product out of EU RoHS legal scope)
REACH Regulation	REACH Declaration
California proposition 65	WARNING: This product can expose you to chemicals including: Lead and lead compounds, which is known to the State of California to cause cancer and birth defects or other reproductive harm. For more information go to www.P65Warnings.ca.gov

Use Again

 Repack and remanufacture	
Take-back	No
WEEE Label	 The product must be disposed on European Union markets following specific waste collection and never end up in rubbish bins

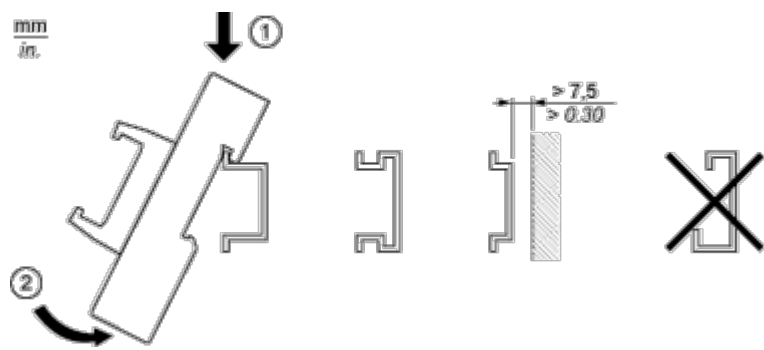
Dimensions Drawings

Dimensions



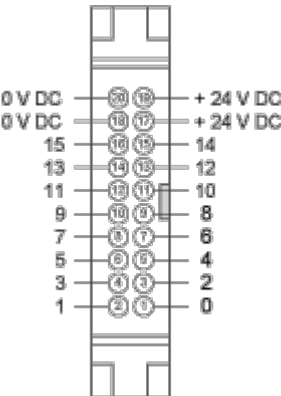
Mounting and Clearance

Mounting



Connections and Schema

HE10 16 Channels



Wiring Diagram

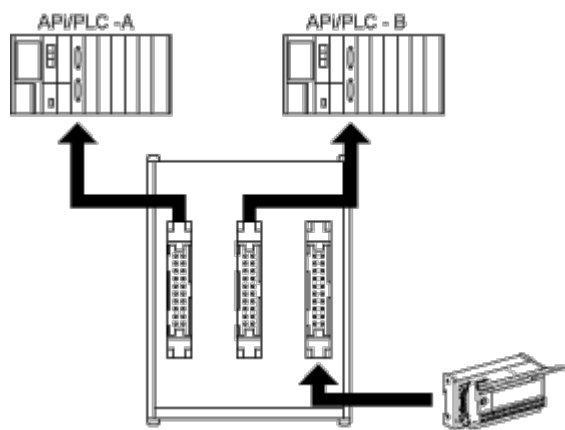


Image of product / Alternate images

Alternative

