

Product data sheet

Specifications



M171 Perf. Plug-in LONWorks

TM171ALON

Main

Range of product	Modicon M171/M172
Product or component type	Communication module
Communication port protocol	LonWorks

Complementary

Integrated connection type	LON wire crimp - twisted pair
Transmission rate	78 kbits/s
Adjustment	Pitch 3.81 mm
Electrical connection	removable screw terminal block
Physical interface	90° insertion - 2.5 mm² cable
Supply	Via base board M171P/M172P
Local signalling	1 LED (red) for service 1 LED (green) for status
Product compatibility	Logic controller M171 performance Logic controller M172 performance
Net weight	0.077 kg

Environment

Product certifications	EAC CSA CE cURus
Marking	CE
IP degree of protection	IP20
Ambient air temperature for operation	-10...55 °C
Ambient air temperature for storage	-20...85 °C
Relative humidity	10...90 % without condensation

Packing Units

Unit Type of Package 1	PCE
Number of Units in Package 1	1
Package 1 Height	9.0 cm
Package 1 Width	12.5 cm
Package 1 Length	13.3 cm

Disclaimer: This documentation is not intended as a substitute for and is not to be used for determining suitability or reliability of these products for specific user applications


Package 1 Weight	160.0 g
Unit Type of Package 2	S01
Number of Units in Package 2	4
Package 2 Height	15.0 cm
Package 2 Width	15.0 cm
Package 2 Length	40.0 cm
Package 2 Weight	836.0 g

Schneider Electric aims to achieve Net Zero status by 2050 through supply chain partnerships, lower impact materials, and circularity via our ongoing “Use Better, Use Longer, Use Again” campaign to extend product lifetimes and recyclability.



[Environmental Data explained >](#)

[How we assess product sustainability >](#)

Use Better

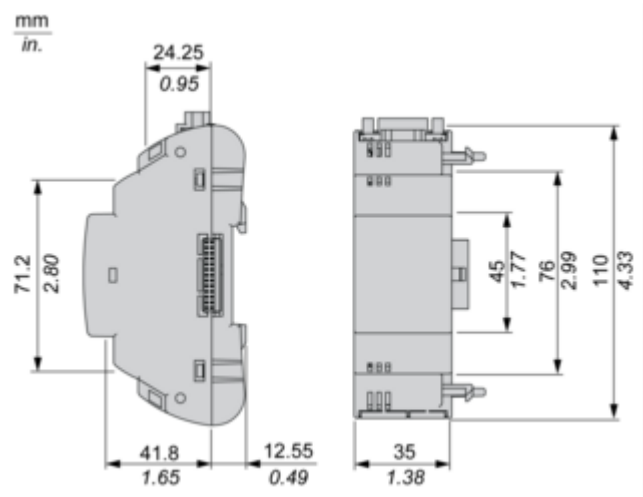
 Materials and Substances	
Packaging made with recycled cardboard	Yes
Packaging without single use plastic	No
EU RoHS Directive	Pro-active compliance (Product out of EU RoHS legal scope)
REACH Regulation	REACH Declaration
California proposition 65	WARNING: This product can expose you to chemicals including: Lead and lead compounds, which is known to the State of California to cause cancer and birth defects or other reproductive harm. For more information go to www.P65Warnings.ca.gov

Use Again

 Repack and remanufacture	
Take-back	No
WEEE Label	 The product must be disposed on European Union markets following specific waste collection and never end up in rubbish bins

Dimensions Drawings

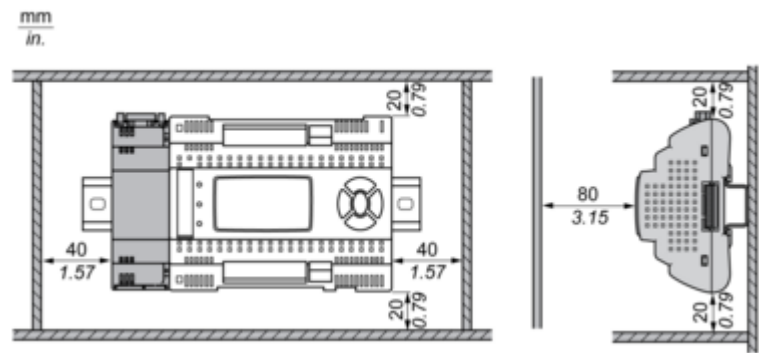
Dimensions



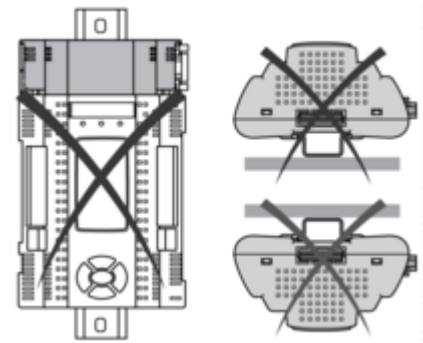
Mounting and Clearance

Mounting and Clearance

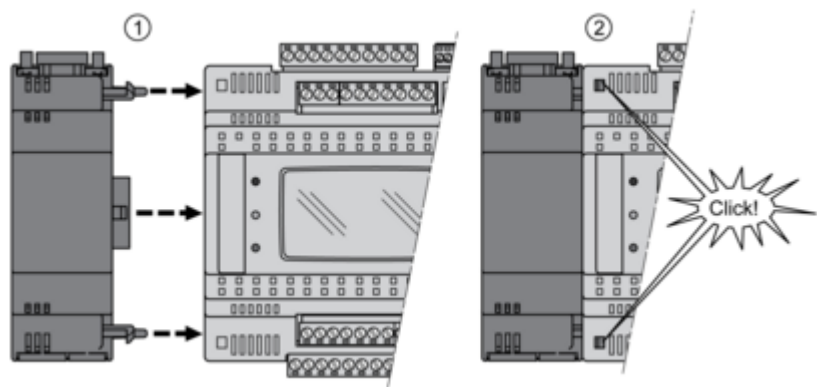
Clearance



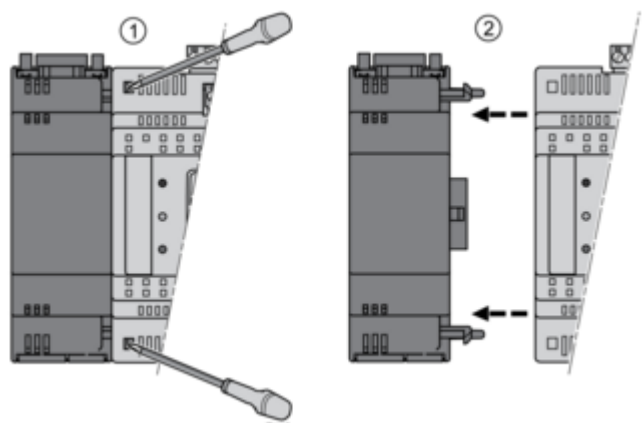
Misplacement



Mounting on Controller



Dismounting

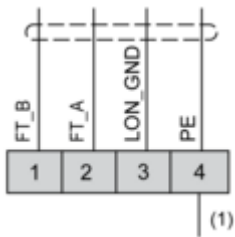
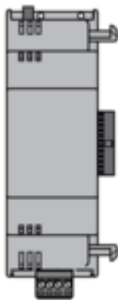


Connections and Schema

Connections and Schema

LonWorks Communication Module

TM171ALON



(1) PE to be connected externally to the protective earth.