

# Product data sheet

Specifications



Disconnect switch, TeSys VLS,  
body switch, 60A, 30HP at 480VAC,  
UL508, three phase, 5kA SCCR,  
size 1, DIN rail mount

VLS3P063R1

Product availability: Stock - Normally stocked in distribution facility

## Main

Range	TeSys
Product Name	TeSys VARIO LS
Device Short Name	VLS3P
Product Type	Switch body

## Complementary

Device Composition	Switch Handle
Mounting Support	Back DIN rail
Mounting Method	By clips back
Performance Level	High performance
Number of Poles	3P
Contact Type and Composition	3 NO
Color	Gray
[Ue] UL Rated Operational Voltage	600 V AC 50/60 Hz UL 508
[Ue] IEC Rated Operational Voltage	690 V AC 50/60 Hz
UL Maxium Horsepower Ratings	10 hp 200/208 V AC 15 hp 240 V AC 30 hp 480 V AC 30 hp 600 V AC 2 hp 120 V AC 7.5 hp 240 V AC
IEC Rated Operational Power in W	22 kW 400 V AC-23A) 22 kW 500 V AC-23A) 22 kW 690 V AC-23A)
[Ie] Rated Operational Current	60 A Ue: 600 V UL 508 63 A AC-21A Ue: 400 V 63 A AC-21A Ue: 500 V 63 A AC-21A Ue: 690 V 45 A AC-22A Ue: 400 V 45 A AC-22A Ue: 500 V 45 A AC-22A Ue: 690 V 45 A AC-23A Ue: 400 V 25 A AC-23A Ue: 500 V 25 A AC-23A Ue: 690 V
[Ith] Conventional Free Air Thermal Current	63 A (at 131 °F (55 °C))
[Ithe] Conventional Enclosed Thermal Current	45 A

Price is "List Price" and may be subject to a trade discount – check with your local distributor or retailer for actual price.

Disclaimer: This documentation is not intended as a substitute for and is not to be used for determining suitability or reliability of these products for specific user applications

Making Capacity ( I Rms)	120 A 690 V AC-22A 400 A 690 V AC-23A 94.5 A 690 V AC-21A
Breaking Capacity	120 A 690 V AC-22A) 320 A 690 V AC-23A) 94.5 A 690 V AC-21A)
SCCR	Fuse RK5 45 A maximum: 5 kA at 600 V AC
Rated Conditional Short Circuit Current	50 kA 400 V 63 A gG
[Icm] Rated Short Circuit Making Capacity	1128 A 690 V
[Icw] Rated Short Time Withstand Current	800 A 690 V 1 s
[Uimp] Rated Impulse Withstand Voltage	8 kV
Suitability for Isolation	Yes
Network Type	AC
Network Frequency	50/60 Hz
Intermittent Duty Class	Class 120 - 60 %
Control Type	Rotary handle
Rotary Handle Mounting Style	Direct
Handle Color	Black
Handle Front Plate Color	Grey
Rotary Handle Padlocking	1 padlock 0.2 in (4 mm)
Marking	0 - 1
Mechanical Durability	100000 cycles
Electrical Durability	15000 cycles AC-21
UL Wire Size	AWG 18...AWG 6 copper
IEC Terminal Connection	Power circuit screw clamp terminals 0.02 in² (10 mm²) solid Power circuit screw clamp terminals 0.02 in² (16 mm²) flexible - without cable end
Tightening Torque	Power circuit 15.9...17.7 lbf.in (1.8...2 N.m) screw clamp terminals
Height	3.0 in (75 mm)
Width	1.4 in (36 mm)
Depth	3.07 in (78 mm)
Product Weight	0.298 lb(US) (0.135 kg)

## Environment

Standards	UL 508 CSA C22.2 No 14 IEC 60947-3
Product Certifications	cULus GL
Degree of Protection	IP20 conforming to IEC 60529
Mechanical Robustness	Vibrations 2...100 Hz Fc 0.7 g) IEC 60068-2-6 Shocks 11 ms Ea 15 gn) IEC 60068-2-27
Ambient Air Temperature for Operation	-13...131 °F (-25...55 °C)
Fire Resistance	1760 °F (960 °C) IEC 60695-2-11
Compatibility Code	VLS

## Ordering and shipping details

Category	US10CP121734
Discount Schedule	0CP1
GTIN	3606481205414
Returnability	Yes
Country of origin	IT

## Packing Units


Unit Type of Package 1	PCE
Nbr. of units in pkg.	1
Package 1 Height	3.15 in (8.000 cm)
Package 1 Width	3.35 in (8.500 cm)
Package 1 Length	4.72 in (12.000 cm)
Package weight(Lbs)	5.961 oz (169.000 g)
Unit Type of Package 2	S03
Number of Units in Package 2	27
Package 2 Height	11.81 in (30.000 cm)
Package 2 Width	11.81 in (30.000 cm)
Package 2 Length	15.75 in (40.000 cm)
Package 2 Weight	11.155 lb(US) (5.060 kg)

Schneider Electric aims to achieve Net Zero status by 2050 through supply chain partnerships, lower impact materials, and circularity via our ongoing “Use Better, Use Longer, Use Again” campaign to extend product lifetimes and recyclability.



[Environmental Data explained >](#)

[How we assess product sustainability >](#)

Use Better

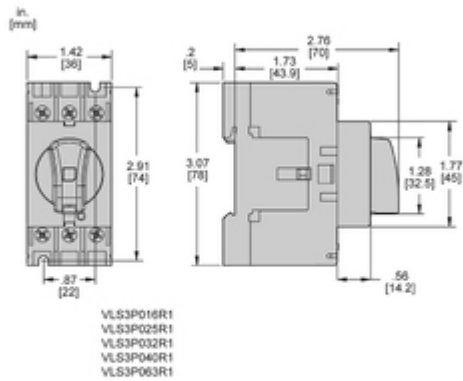
 Materials and Substances	
Packaging made with recycled cardboard	Yes
Packaging without single use plastic	Yes
<a href="#">EU RoHS Directive</a>	Compliant

Use Again

 Repack and remanufacture	
Take-back	No
WEEE Label	 The product must be disposed on European Union markets following specific waste collection and never end up in rubbish bins.

Technical Illustration

Dimensions



ALL DIMENSIONS ARE APPROXIMATE.  
ALSO SEE TECHNICAL DRAWINGS AND DOCUMENTATION.