

Product data sheet

Specifications



Complete push button, Harmony XB4 - ATEX D, black projecting with boot, metal, 22mm, spring return, 1NO

XB4BP21GEX

Main

Range of product	Harmony XB4
Product or component type	Complete push-button
Device short name	XB4
Bezel material	Chromium plated metal
Fixing collar material	Zamak
Mounting diameter	22 mm
Sale per indivisible quantity	1
Dust zone	Zone 21 - 22
Gas zone	Zone 1 - 2
Type of operator	spring return
Operator profile	Black projecting
Operator additional information	Booted (clear silicon)
Contacts type and composition	1 NO

Complementary

Width	46.2 mm
Height	30 mm
Depth	72 mm
Product weight	0.089 kg
Device mounting	Fixing hole - diameter: 22.5 mm +/- 0.2 mm conforming to IEC 60947-1
Fixing center	>= 30 x 40 mm (support panel) - thickness: 1...6 mm
Embedding depth	58 mm
Marking	Ex tb IIIC Db Ex db eb IIC Gb II 2 GD
Shape of signaling unit head	Round
Contact operation	Slow-break
Positive opening	Without
Operating travel	1.657 mm (engagement point) 4.622 mm (changing state point) 4.452 mm (total travel)
Operating force	3.962 N
Mechanical durability	5000000 cycles

Connections - terminals	Screw clamp terminals, 2 x 1.5 mm ² with cable end conforming to IEC 60947-1 Screw clamp terminals, 1 x 2.5 mm ² without cable end conforming to IEC 60947-1
Tightening torque	0.8...1.2 N.m conforming to IEC 60947-1
[I_{th}] conventional free air thermal current	10 A conforming to IEC 60947-5-1
[U_i] rated insulation voltage	415 V
[I_e] rated operational current	1.9 A at 380 V, AC, A600 conforming to IEC 60947-5-1 3 A at 240 V, AC, A600 conforming to IEC 60947-5-1 6 A at 120 V, AC, A600 conforming to IEC 60947-5-1 0.27 A at 250 V, DC, Q300 conforming to IEC 60947-5-1 0.55 A at 125 V, DC, Q300 conforming to IEC 60947-5-1 2.87 A at 24 V, DC, Q300 conforming to IEC 60947-5-1

Environment

Protective treatment	TH
Ambient air temperature for storage	-40...70 °C
Ambient air temperature for operation	-20...75 °C
IP degree of protection	IP66 conforming to IEC 60529
Standards	IEC 60079-0:2009 EN/IEC 60079-1:2009 IEC 60079-7:2009 IEC 60079-31:2009 UL 60079-0 UL 60079-1 UL 60079-31 ANSI/ISA 12.12.01 CSA C22.2 No 213
Product certifications	INERIS 04ATEX9004U

Packing Units

Unit Type of Package 1	PCE
Number of Units in Package 1	1
Package 1 Height	2.8 cm
Package 1 Width	4.5 cm
Package 1 Length	7.5 cm
Package 1 Weight	108.0 g

Environmental Data

Schneider Electric aims to achieve Net Zero status by 2050 through supply chain partnerships, lower impact materials, and circularity via our ongoing “Use Better, Use Longer, Use Again” campaign to extend product lifetimes and recyclability.

[Environmental Data explained >](#)

[How we assess product sustainability >](#)

Environmental footprint

Total lifecycle Carbon footprint 1

Environmental Disclosure [Product Environmental Profile](#)

Use Better

Materials and Substances

Packaging made with recycled cardboard Yes

Packaging without single use plastic No

[EU RoHS Directive](#) Pro-active compliance (Product out of EU RoHS legal scope)

REACH Regulation [REACH Declaration](#)

California proposition 65 **WARNING:** This product can expose you to chemicals including: Di-isodecyl phthalate (DIDP), which is known to the State of California to cause birth defects or other reproductive harm. For more information go to www.P65Warnings.ca.gov

Use Again

Repack and remanufacture

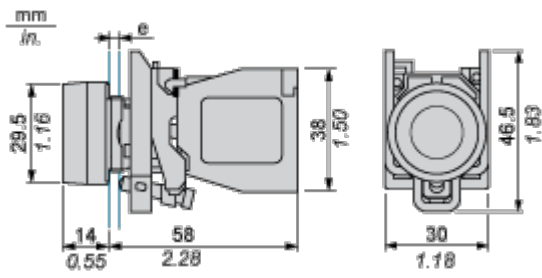
End of life manual availability [End of Life Information](#)

Take-back No

WEEE Label  The product must be disposed on European Union markets following specific waste collection and never end up in rubbish bins

Dimensions Drawings

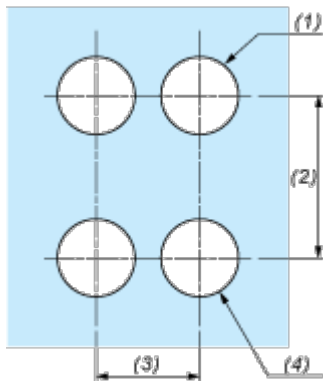
Dimensions



e : support thickness: 1 to 6 mm / 0.04 to 0.24 in.

Mounting and Clearance

Panel Cut-out for Pushbuttons, Switches and Pilot Lights (Finished Holes, Ready for Installation)

Connection by Screw Clamp Terminals

- (1) Diameter on finished panel or support
- (2) 40 mm min. / 1.57 in. min.
- (3) 30 mm min. / 1.18 in. min.
- (4) $\varnothing 22.5 \text{ mm} / 0.89 \text{ in. recommended } (\varnothing 22.3 \text{ mm }_0^{+0.4} / 0.88 \text{ in. }_0^{+0.016})$

Technical Illustration

Dimensions

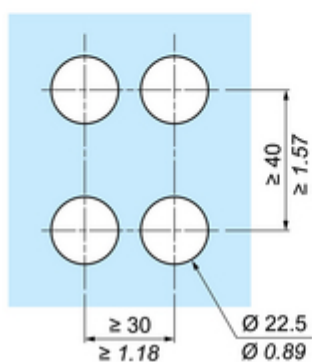
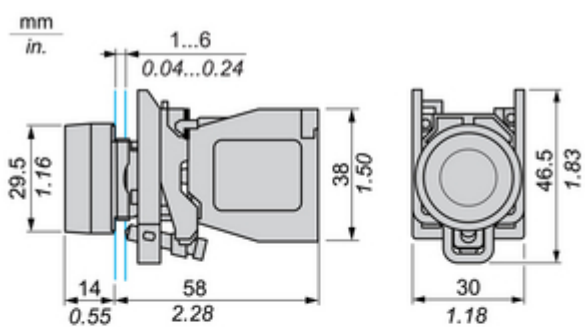
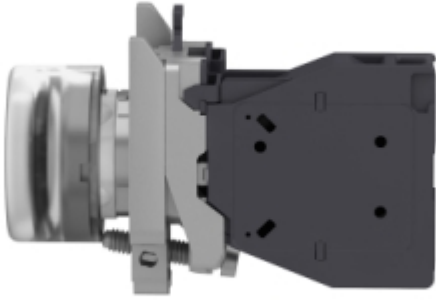


Image of product / Alternate images

Alternative



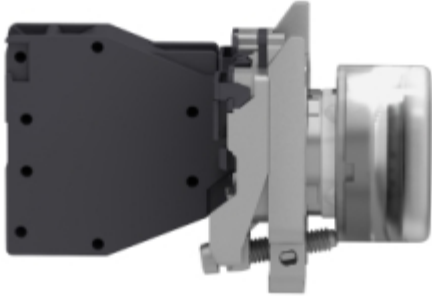


Image of product in real life situation

