

# Product data sheet

Specifications



Extended rotary handle kit, TeSys  
Deca Fram 2, IP65, red  
handle, without trip indication, for  
GV2L/GV2P

GV2APN04

## Main

Range	TeSys
Device short name	GV2AP
Product or component type	Rotary handle kit
Accessory / separate part category	Control accessory
Handle colour	Red
Handle front plate colour	Yellow

## Complementary

Product compatibility	GV2P GV2L
Rotary handle padlocking	Padlock in OFF position
Rotary handle mounting style	Extended
Locking options description	1 to 3 padlocks
Back/door distance	140...250 mm
Product weight	0.3 kg

## Environment

Product certifications	CULus
IP degree of protection	IP65

## Packing Units

Unit Type of Package 1	PCE
Number of Units in Package 1	1
Package 1 Height	6.500 cm
Package 1 Width	9.000 cm
Package 1 Length	37.000 cm
Package 1 Weight	335.000 g
Unit Type of Package 2	S03
Number of Units in Package 2	12
Package 2 Height	30.000 cm
Package 2 Width	30.000 cm
Package 2 Length	40.000 cm

Disclaimer: This documentation is not intended as a substitute for and is not to be used for determining suitability or reliability of these products for specific user applications

Package 2 Weight	4.420 kg
------------------	----------

## Contractual warranty

Warranty	18 months
----------	-----------

Schneider Electric aims to achieve Net Zero status by 2050 through supply chain partnerships, lower impact materials, and circularity via our ongoing “Use Better, Use Longer, Use Again” campaign to extend product lifetimes and recyclability.

[Environmental Data explained >](#)


[How we assess product sustainability >](#)

Environmental footprint	
Environmental Disclosure	<a href="#">Product Environmental Profile</a>

Use Better

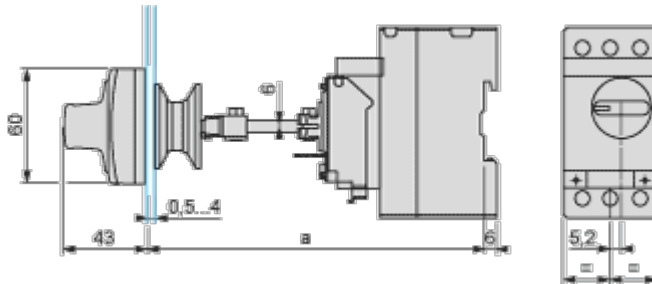
Materials and Substances	
Packaging made with recycled cardboard	Yes
Packaging without single use plastic	No
<a href="#">EU RoHS Directive</a>	Compliant with Exemptions
SCIP Number	66ab381c-81b1-42a8-ae7a-ce3f5adb691a
California proposition 65	WARNING: This product can expose you to chemicals including: Lead and lead compounds, which is known to the State of California to cause cancer and birth defects or other reproductive harm. For more information go to <a href="http://www.P65Warnings.ca.gov">www.P65Warnings.ca.gov</a>

Use Again

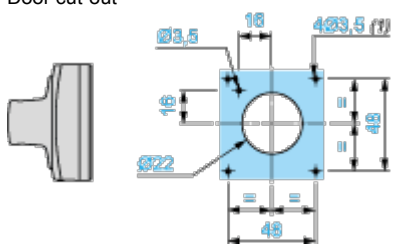
Repack and remanufacture	
End of life manual availability	<a href="#">End of Life Information</a>
Take-back	No
WEEE Label	 The product must be disposed on European Union markets following specific waste collection and never end up in rubbish bins

## Dimensions Drawings

## Mounting of External Operator GV2APN01, GV2APN02 or GV2APN04 for Motor Circuit Breakers GV2L



Door cut-out

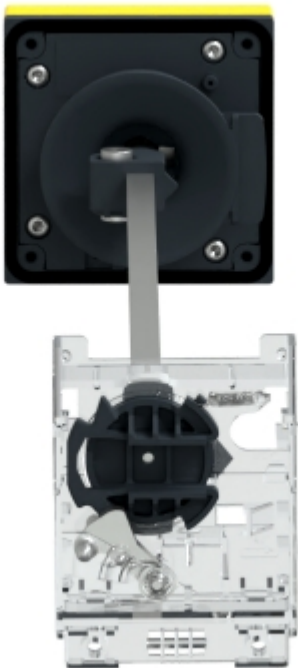


(1) For IP65 only.

Image of product / Alternate images

Alternative

---





Technical Illustration

Assembly's dimensions

---

