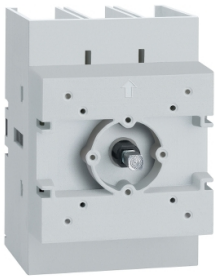


Product data sheet

Specifications



Disconnect switch, TeSys VLS,
body switch, 80A, 40HP at 480VAC,
UL98, three phase, 100kA SCCR,
size 2, door mount

VLS3P080D2

Product availability: Stock - Normally stocked in distribution facility

Main

Range	TeSys
Product Name	TeSys VARIO LS
Device Short Name	VLS3P
Product Type	Switch body

Complementary

Mounting Support	Door
Performance Level	High performance
Number of Poles	3P
Contact Type and Composition	3 NO
Color	Gray
[Ue] UL Rated Operational Voltage	600 V AC 50/60 Hz UL 508
Network type	AC
Network frequency	50/60 Hz
UL Maxium Horsepower Ratings	25 hp 200/208 V AC 25 hp 240 V AC 40 hp 480 V AC 40 hp 600 V AC 3 hp 120 V AC 10 hp 240 V AC
[Ue] IEC Rated Operational Voltage	690 V AC 50/60 Hz
IEC Rated Operational Power in W	45 kW 400 V AC-23A) 45 kW 500 V AC-23A) 45 kW 690 V AC-23A)
[Ie] Rated Operational Current	100 A Ue: 600 V UL98 80 A AC-21A Ue: 400 V 80 A AC-21A Ue: 500 V 80 A AC-21A Ue: 690 V 80 A AC-22A Ue: 400 V 80 A AC-22A Ue: 500 V 80 A AC-22A Ue: 690 V 80 A AC-23A Ue: 400 V 63 A AC-23A Ue: 500 V 47 A AC-23A Ue: 690 V
[Ith] Conventional Free Air Thermal Current	80 A (at 131 °F (55 °C))
[Ithe] Conventional Enclosed Thermal Current	80 A

Price is "List Price" and may be subject to a trade discount – check with your local distributor or retailer for actual price.

Disclaimer: This documentation is not intended as a substitute for and is not to be used for determining suitability or reliability of these products for specific user applications

Making capacity (I Rms)	120 A 690 V AC-21A 800 A 690 V AC-23A 240 A 690 V AC-22A
Breaking Capacity	120 A 690 V AC-21A) 240 A 690 V AC-22A) 640 A 690 V AC-23A)
SCCR	Circuit-breaker 200 A maximum: 100 kA at 480 V AC Fuse CC 200 A maximum: 100 kA at 480 V AC Fuse J 200 A maximum: 100 kA at 480 V AC Fuse T 200 A maximum: 100 kA at 480 V AC Fuse CC 100 A maximum: 50 kA at 600 V AC Fuse J 100 A maximum: 50 kA at 600 V AC Fuse T 100 A maximum: 50 kA at 600 V AC
Rated Conditional Short Circuit Current	50 kA 400 V 80 A gG
[Icm] Rated Short Circuit Making Capacity	3550 A 690 V
Intermittent duty class	Class 120 - 60 %
[Uimp] rated impulse withstand voltage	8 kV
[Icw] rated short-time withstand Rms current	2500 A 690 V 1 s
Mechanical Durability	30000 cycles
Electrical Durability	30000 cycles AC-21
UL Wire Size	AWG 12...AWG 1 copper
IEC Terminal Connection	Power circuit screw clamp terminals 0.08 in² (50 mm²) solid Power circuit screw clamp terminals 0.1 in² (70 mm²) flexible - without cable end
Tightening Torque	Power circuit 44.3...53.1 lbf.in (5...6 N.m) screw clamp terminals
Height	2.8 in (70 mm)
Width	2.8 in (70 mm)
Depth	3.9 in (100 mm)
Product Weight	0.805 lb(US) (0.365 kg)

Environment

Standards	UL98 CSA C22.2 No 4 IEC 60947-3
Product Certifications	cULus GL
Degree of Protection	IP20 conforming to IEC 60529
Mechanical Robustness	Vibrations 2...100 Hz Fc 0.7 g) IEC 60068-2-6 Shocks 11 ms Ea 15 gn) IEC 60068-2-27
Ambient Air Temperature for Operation	-13...131 °F (-25...55 °C)
Fire Resistance	1760 °F (960 °C) IEC 60695-2-11

Ordering and shipping details

Category	US10CP121734
Discount Schedule	OCP1
GTIN	3606481156563
Returnability	Yes
Country of origin	IT

Packing Units


Unit Type of Package 1	PCE
Nbr. of units in pkg.	1
Package 1 Height	3.15 in (8.000 cm)
Package 1 Width	3.35 in (8.500 cm)
Package 1 Length	4.72 in (12.000 cm)
Package weight(Lbs)	15.309 oz (434.000 g)
Unit Type of Package 2	S03
Number of Units in Package 2	27
Package 2 Height	11.81 in (30.000 cm)
Package 2 Width	11.81 in (30.000 cm)
Package 2 Length	15.75 in (40.000 cm)
Package 2 Weight	26.896 lb(US) (12.200 kg)

Schneider Electric aims to achieve Net Zero status by 2050 through supply chain partnerships, lower impact materials, and circularity via our ongoing “Use Better, Use Longer, Use Again” campaign to extend product lifetimes and recyclability.



[Environmental Data explained >](#)

[How we assess product sustainability >](#)

Use Better

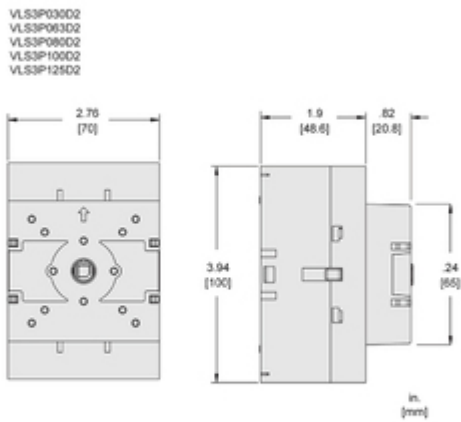
 Materials and Substances	
Packaging made with recycled cardboard	Yes
Packaging without single use plastic	Yes
EU RoHS Directive	Compliant

Use Again

 Repack and remanufacture	
Take-back	No
WEEE Label	 The product must be disposed on European Union markets following specific waste collection and never end up in rubbish bins.

Technical Illustration

Dimensions



ALL DIMENSIONS ARE APPROXIMATE.
REFER TO TECHNICAL DRAWINGS AND DOCUMENTATION FOR COMPLETE INFORMATION.